

**Wake County Public School System  
HERITAGE HIGH SCHOOL  
CENTRAL PLANT REPLACEMENT**

**ADDENDUM NO. 2**

**DATE:** March 7, 2023

**PROJECT:** Wake County Public School System  
Heritage High School  
Central Plant Replacements

**OWNER:** Wake County Public School System  
1551 Rock Quarry Road, Building A, Raleigh, NC 27610

**ENGINEER:** Dewberry Engineers Inc.  
2610 Wycliff Road, Suite 410, Raleigh, NC 27607

This Addendum, applicable to the work designated herein, shall be understood to be and is an Addendum to the contract documents and, as such, shall become a part of and included in the contract.

**Drawings:**

1. Sheet MD1.01 – Revised plan to add demolition scope for domestic water pump.
2. Sheet M1.01 – Revised plan to add piping scope for demolition of domestic water pump.
3. Sheet M6.01 – Revised water heater schedule to include pump sizing criteria.
4. Sheet ED1.01 – Remove circuit from pump demolished in mechanical changes, from equipment back nearest junction box, and mark as spare.

**Specifications:**

1. None.

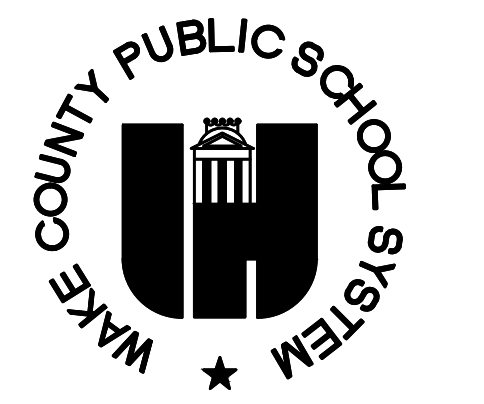
**Contractor Questions:**

1. What is the roof height of the boiler room?
  - a. Response: The roof is 15’-6” above the boiler room floor.

**Attached Documents:**

1. Sheet MD1.01 Mechanical Demolition Plan
2. Sheet M1.01 Mechanical New Work Plan
3. Sheet M6.01 Mechanical Schedules

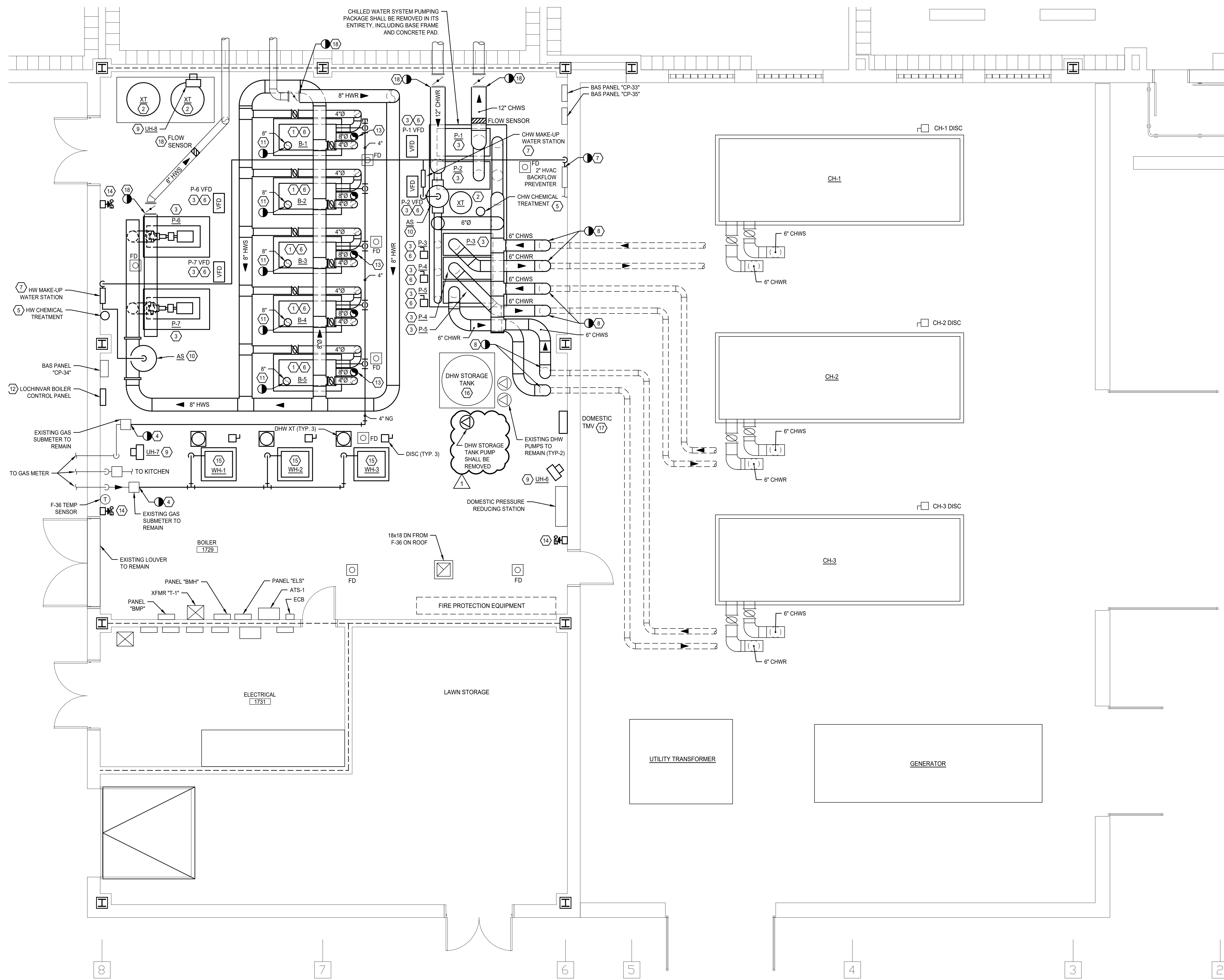
End of Addendum No. 2



1551 ROCK QUARRY ROAD, BLDG A  
RALEIGH, NORTH CAROLINA 27610

HERITAGE HIGH SCHOOL  
PLANT REPLACEMENT  
1150 FORESTVILLE ROAD  
WAKE FOREST, NORTH CAROLINA 27787

F  
E  
D  
C  
B  
A



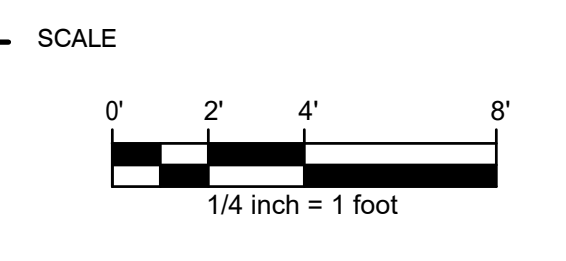
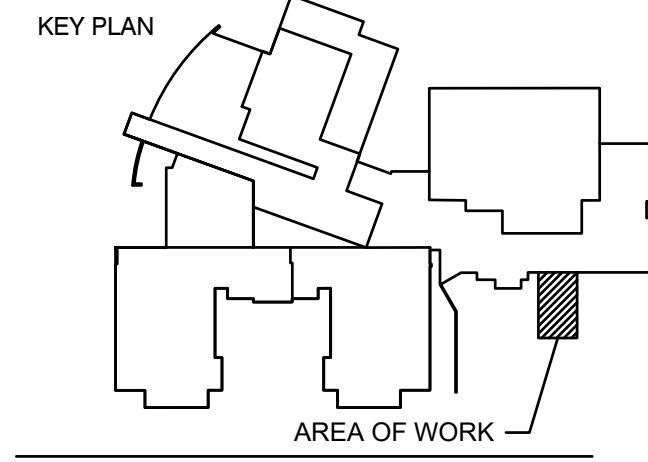
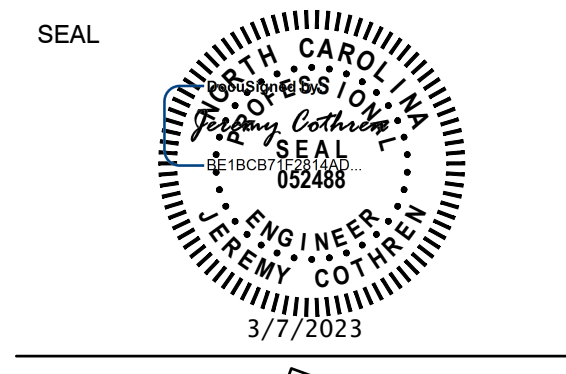
**1 MECHANICAL DEMOLITION PLAN**  
MD1.01 SCALE: 1/4" = 1'-0"  
NORTH

**DEMOLITION KEYED NOTES**

- REMOVE EXISTING BOILER IN ITS ENTIRETY, INCLUDING BUT NOT LIMITED TO SUPPORTS, CONCRETE PADS, VENTING, DRAINS, BOILER PUMP, AND PIPING TO POINTS INDICATED. PATCH ALL DAMAGED OR NEWLY EXPOSED SURFACES TO MATCH EXISTING ADJACENT FINISHES. TURN BOILERS, AS DIRECTED, OVER TO OWNER AND DELIVER TO WCPSS M&O LOADING DOCK, BLDG B, 1551 ROCK QUARRY RD, RALEIGH, NC. BOILERS NOT TO BE DELIVERED SHALL BE PROPERLY DISPOSED OF BY CONTRACTOR. COORDINATE DELIVERY WITH OWNER. DO NOT REMOVE BOILERS WITHOUT PERMISSION FROM THE OWNER AND ENGINEER.
- REMOVE EXISTING HW OR CHW SYSTEM EXPANSION TANK IN ITS ENTIRETY, INCLUDING BUT NOT LIMITED TO HANGERS, SUPPORTS AND PIPING TO POINTS INDICATED. PATCH ALL DAMAGED OR NEWLY EXPOSED SURFACES TO MATCH EXISTING ADJACENT FINISHES. EXISTING CONCRETE PAD TO REMAIN FOR HW EXPANSION TANKS ONLY.
- REMOVE EXISTING HW OR CHW SYSTEM PUMP IN ITS ENTIRETY, INCLUDING BUT NOT LIMITED TO HANGERS, SUPPORTS AND PIPING TO POINTS INDICATED.
- REMOVE GAS PIPING AS SHOWN. PREPARE GAS MAIN FOR RECONNECTION IN NEW WORK.
- REMOVE EXISTING HW OR CHW CHEMICAL TREATMENT IN ITS ENTIRETY, INCLUDING HANGERS, SUPPORTS AND PIPING. PATCH ALL DAMAGED OR NEWLY EXPOSED SURFACES TO MATCH EXISTING ADJACENT FINISHES.
- CONTRACTOR SHALL DISCONNECT EXISTING EQUIPMENT CONTROLS FROM VFD OR MSD AS INDICATED. REMOVE WIRING AND CONDUIT FROM EQUIPMENT TO JUNCTION BOX. JUNCTION BOX AND WIRING SHALL REMAIN FOR RECONNECTION TO EQUIPMENT CONTROLS.
- REMOVE MAKEUP WATER SYSTEM AS SHOWN. VERIFY EXISTING PIPE SIZE PRIOR TO DEMOLITION.
- REMOVE CHILLED WATER PIPING TO END OF EXTERNAL INSULATION IN VERTICAL PIPE APPROXIMATELY 12-INCHES AFF. PREPARE OPEN ENDS FOR RECONNECTION.
- REMOVE EXISTING UNIT HEATERS INCLUDING SUPPORTS AND HANGERS.
- REMOVE EXISTING AIR SEPARATOR INCLUDING SUPPORTS, HANGERS AND ASSOCIATED PIPING.
- REMOVE BOILER INTAKE PIPE IN ITS ENTIRETY. PATCH ROOF PENETRATION TO MATCH EXISTING ADJACENT FINISH AND SEAL WATER TIGHT. REFER TO ROOFING DETAILS.
- REMOVE EXISTING BOILER MANAGEMENT SYSTEM CONTROL PANEL. REMOVE EXISTING CONDUIT AND CABLING FROM BOILER MANAGEMENT PANEL TO BOILERS AND WIRING TROUGH.
- PATCH BOILER VENT ROOF PENETRATION TO MATCH EXISTING ADJACENT FINISHES AND SEAL WATER TIGHT. THE REMAINING TWO OPENINGS SHALL BE ENLARGED AND REUSED FOR BOILER VENTS. REFER TO ROOFING DETAILS.
- REMOVE EXISTING EPO SWITCH.
- REMOVE EXISTING WATER HEATER IN ITS ENTIRETY, INCLUDING BUT NOT LIMITED TO THE CONTROL PANEL, EXPANSION TANKS, SUPPORTS, DRAINS AND PIPING TO POINTS INDICATED IN DETAIL 2/M1.01. PREPARE ALL EXISTING POINTS OF DISCONNECT FOR RECONNECTION TO REPLACEMENT WATER HEATERS. REMOVE CONCRETE HOUSEKEEPING PADS. EXISTING VENTING AND COMBUSTION INTAKES SHALL BE RE-UTILIZED AS MUCH AS POSSIBLE.
- EXISTING DOMESTIC WATER HEATER STORAGE TANK TO REMAIN.
- REMOVE EXISTING DOMESTIC HOT WATER SYSTEM THERMOSTATIC MIXING VALVE. PREPARE EXISTING TO REMAIN DOMESTIC WATER PIPING FOR RECONNECTION TO REPLACEMENT MIXING VALVE. SEE DETAIL 3/M1.01.
- REMOVE EXISTING CHILLED WATER OR HOT WATER PIPING TO POINT INDICATED, INCLUDING INSULATION, VALVES, CONTROLS, FLOW METERS, AND ALL OTHER ASSOCIATED COMPONENTS. CONTRACTOR SHALL VERIFY SIZE AND FLOW DIRECTION OF EXISTING PIPING PRIOR TO DEMOLITION.

**RATED WALL LEGEND**

-----	2 HR FIRE WALL
-------	----------------



No.	DATE	BY	Description
1	3/7/2023	JC	ADDENDUM NO 2

REVISIONS

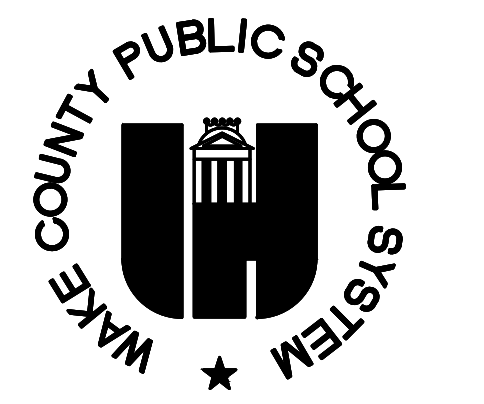
DRAWN BY: KR  
APPROVED BY: JC  
CHECKED BY: JMT  
DATE: FEBRUARY 10, 2023

**MECHANICAL DEMOLITION PLAN**

PROJECT NO. 50159355

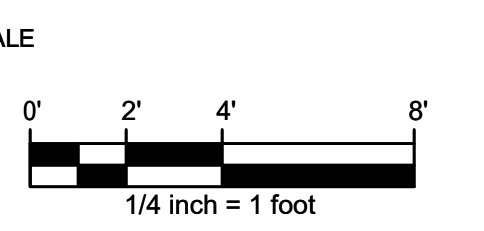
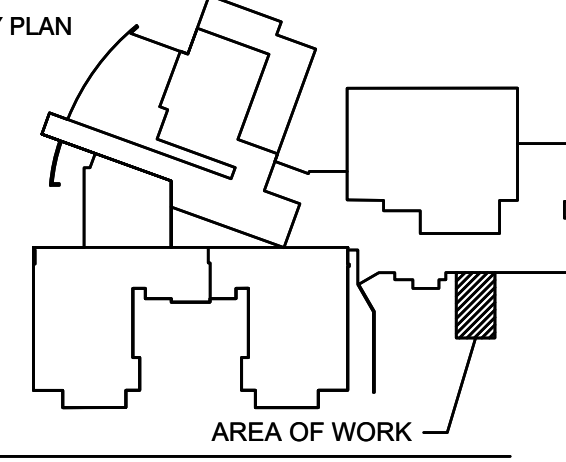
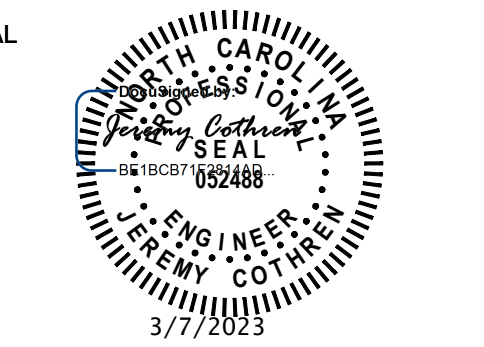
**MD1.01**

SHEET NO.



1551 ROCK QUARRY ROAD, BLDG A  
RALEIGH, NORTH CAROLINA 27610

HERITAGE HIGH SCHOOL  
PLANT REPLACEMENT  
1150 FORESTVILLE ROAD  
WAKE FOREST, NORTH CAROLINA 27687



No.	DATE	BY	Description
1	3/7/2023	JC	ADDENDUM NO 2

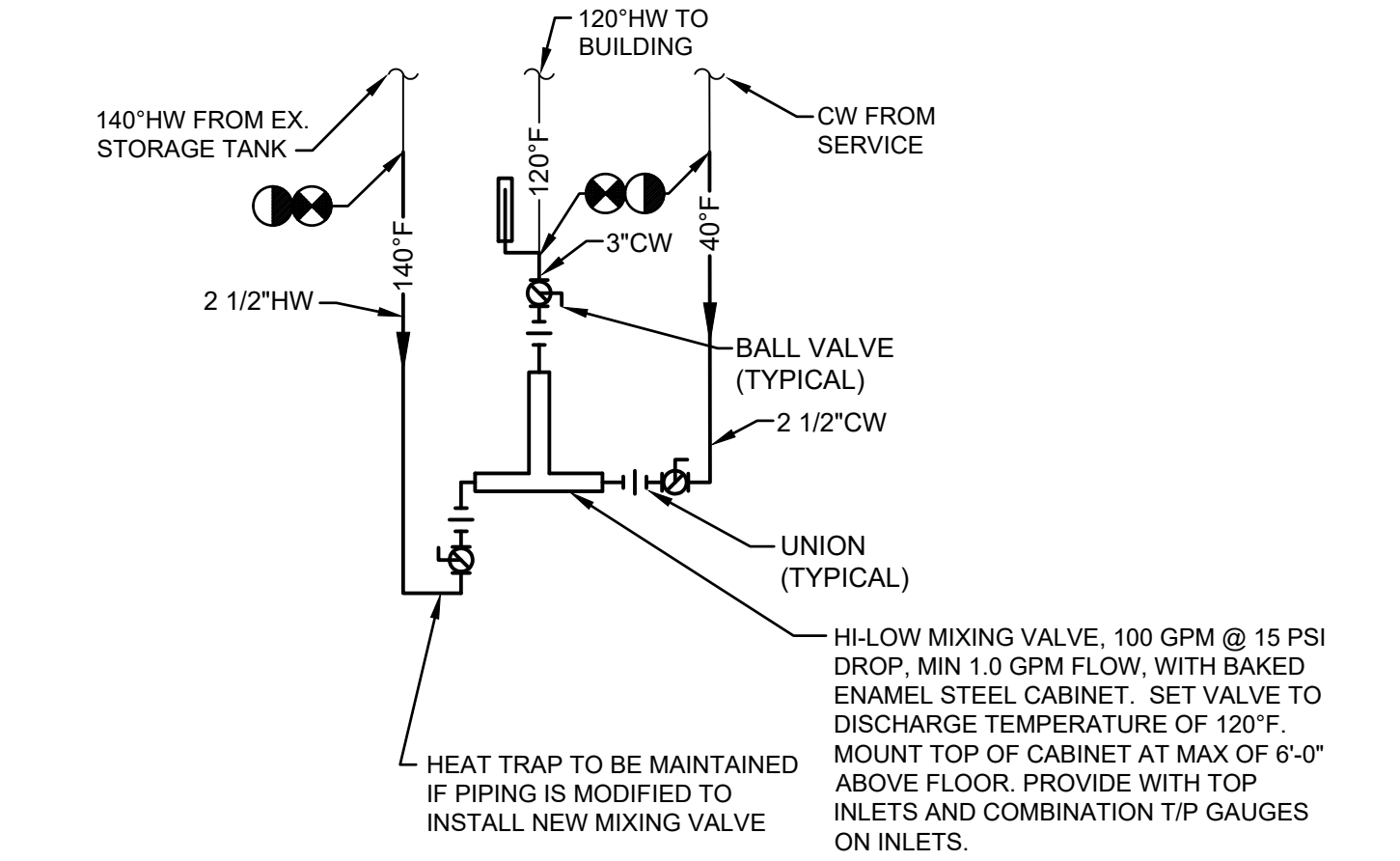
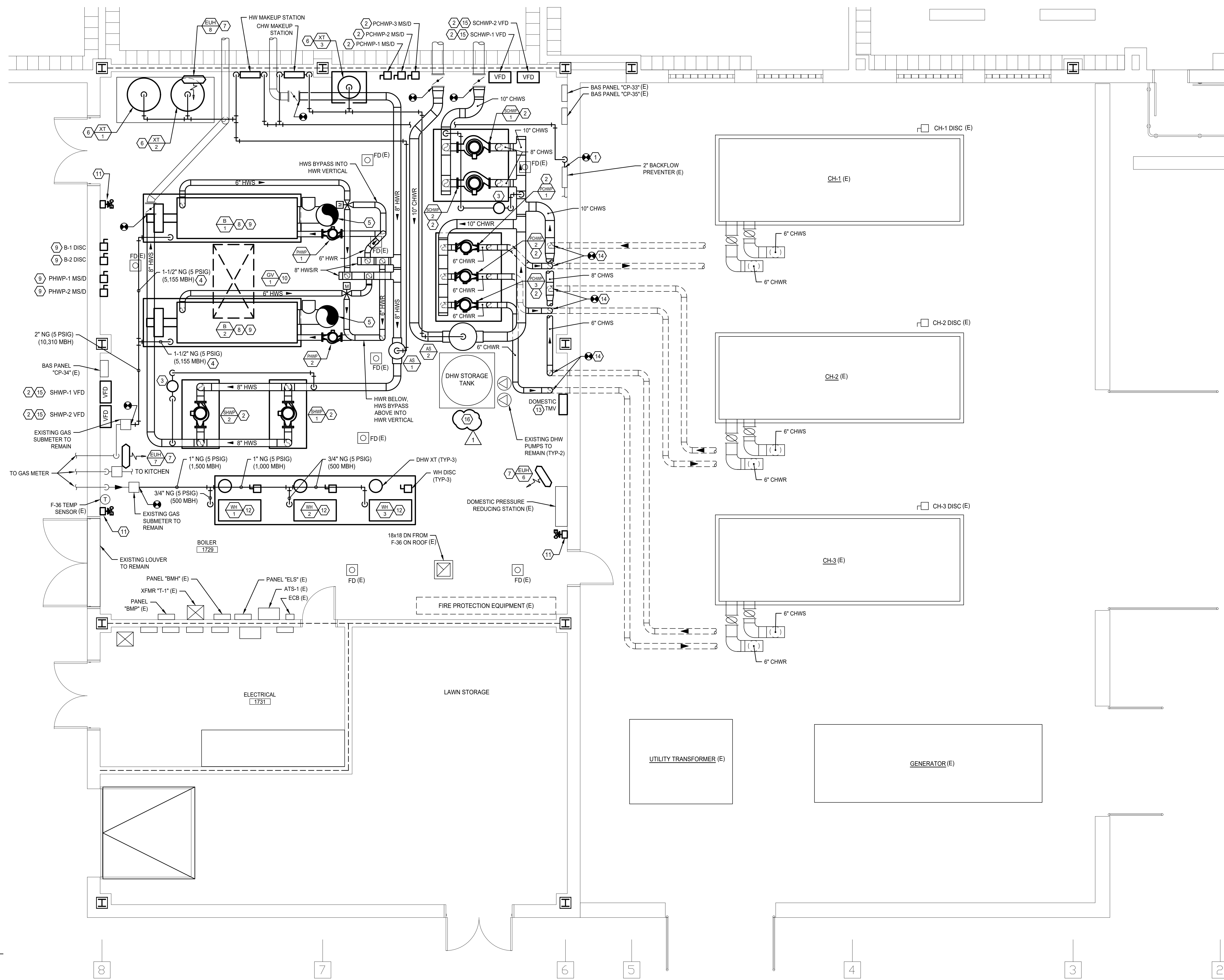
REVISIONS  
DRAWN BY: KR  
APPROVED BY: JC  
CHECKED BY: JMT  
DATE: FEBRUARY 10, 2023

TITLE  
**MECHANICAL NEW WORK PLAN**

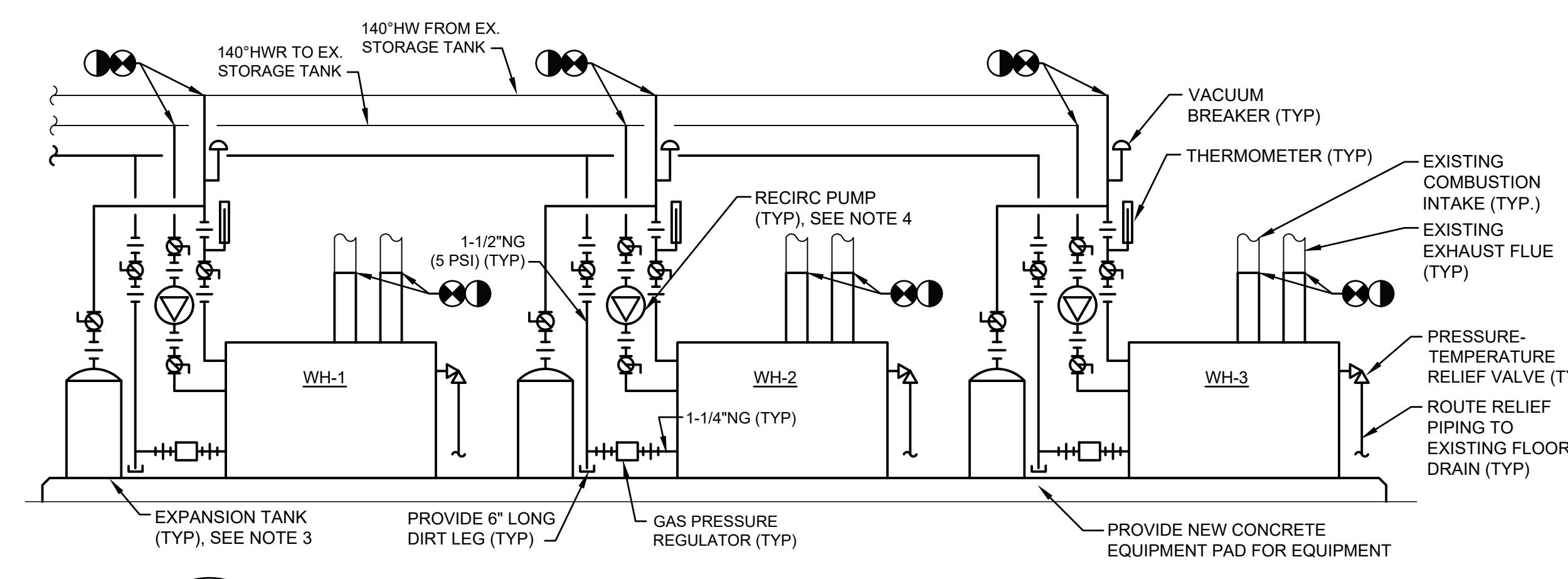
PROJECT NO. 50159355

**M1.01**

SHEET NO.



**3 THERMOSTATIC MIXING VALVE DETAIL**  
M1.01 SCALE: N.T.S.



**1 WATER HEATER DETAIL**  
M1.01 SCALE: N.T.S.

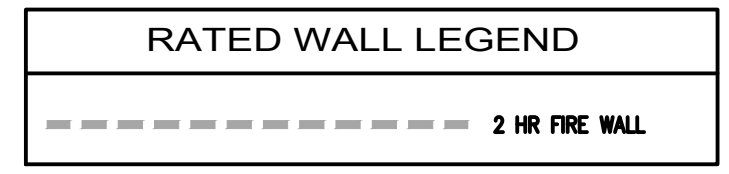
**WATER HEATER DETAIL NOTES:**

- RECIRCULATING PUMPS SHALL BE CONTROLLED THROUGH WATER HEATER CONTROL PANEL. WATER HEATER SHALL BE OPERATED THROUGH TEMPERATURE SENSOR IN EXISTING STORAGE TANK. PROVIDE NEW TEMPERATURE SENSOR IN EXISTING STORAGE TANK TO CONTROL WATER HEATERS.
- PROVIDE PIPING INSULATION ON ALL NEW PIPING AND EXISTING BARE PIPING. PROVIDE CANVAS JACKET AND PAINT TO MATCH EXISTING SYSTEM COLORS.
- AMTROL MODEL NO. ST-30V-C VERTICAL, BLADDER-TYPE EXPANSION TANK, MIN. 8.96 GALLONS ACCEPTANCE VOLUME, MIN. 14 GALLONS TOTAL VOLUME. MOUNT TANK ON PAD.
- 120V, 1PH RECIRCULATION PUMP. FURNISHED WITH WATER HEATER. SHALL BE CONTROLLED THROUGH WATER HEATER. REFER TO ELECTRICAL POWER PLANS FOR CIRCUIT INFORMATION.

**1 MECHANICAL NEW WORK PLAN**  
M1.01 SCALE: 1/4" = 1'-0"

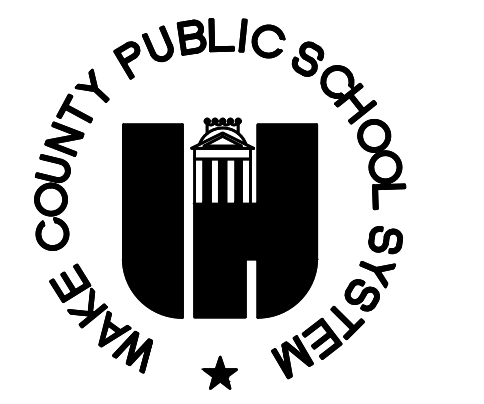
**NEW WORK KEYED NOTES (N):**

- PROVIDE MAKEUP WATER LINE FROM POINT INDICATED. MATCH EXISTING PIPE SIZE. REFER TO DETAIL FOR INSTALLATION AND ROUTING REQUIREMENTS.
- PROVIDE CONNECTION TO EQUIPMENT CONTROLS FROM EXISTING BRANCH CIRCUIT WIRING. EXTEND WIRING AND CONDUIT AS REQUIRED TO EQUIPMENT CONTROLS.
- PROVIDE HW AND CHW CHEMICAL TREATMENT. REFER TO DETAIL AND SPECIFICATIONS FOR MORE INFORMATION.
- ROUTE GAS PIPING DOWN TO BOILER. PROVIDE GAS REGULATOR TO REDUCE GAS PRESSURE DOWN TO EQUIPMENT REQUIREMENT. UNION, ISOLATION VALVE, AND 6" DIRT LEG VENT REGULATOR TO BUILDING EXTERIOR. GAS PIPE SIZE BETWEEN REGULATOR AND EQUIPMENT SHALL MATCH EQUIPMENT CONNECTION SIZE.
- ENLARGE EXISTING OPENING FOR BOILER VENT. REFER TO FLUE STACK OUTLET DETAIL AND ROOFING DETAILS.
- PROVIDE HW OR CHW EXPANSION TANK. REFER TO DETAIL FOR MORE INFORMATION.
- PROVIDE UNIT HEATER IN SAME LOCATION AS EXISTING. REFER TO DETAIL FOR INSTALLATION AND ROUTING REQUIREMENTS.
- PROVIDE 6-INCH DEEP CONCRETE PAD THAT EXTENDS 4-INCHES LONGER AND WIDER THAN UNIT FOOTPRINT.
- PROVIDE CONNECTION TO EQUIPMENT CONTROLS. PROVIDE WIRING AND CONDUIT FROM EXISTING HONEYWELL CONTROLS.
- PROVIDE ROOF MOUNTED GRAVITY HOOD FOR BOILER COMBUSTION INTAKE AIR. COORDINATE WITH ROOFING CONSULTANT PRIOR TO INSTALLATION.
- PROVIDE EPO SWITCH IN SAME LOCATION AS EXISTING. EPO SWITCHES SHALL BE HARDWIRED TO SHUTDOWN ALL BOILERS AND WATER HEATERS WHEN ANY ONE OF THE BUTTONS ARE PRESSED.
- PROVIDE THERMOSTATIC MIXING VALVE. LOCATED ON WALL AS SHOWN. PROVIDE TMV WITH 100 GPM, 15 PSIG DIFFERENTIAL, 140°F INLET TEMP, 120°F OUTLET TEMP. SEE DETAIL 3M1.01.
- CONNECT TO EXISTING CHWS/R PIPING IN VERTICAL AS SHOWN. PROVIDE ISOLATION VALVES IN VERTICAL.
- MAINTAIN 48-INCH DEEP CLEARANCE IN FRONT OF VFD.
- PATCH PIPING UPON REMOVAL OF DHW STORAGE TANK PUMP.





Dewberry Engineers Inc.  
2610 WYCLIFF ROAD  
SUITE 410  
RALEIGH, NC 27607  
PHONE: 919.881.9939  
FAX: 919.881.9923  
NC License No.: F-0529



1551 ROCK QUARRY ROAD, BLDG A  
RALEIGH, NORTH CAROLINA 27610

HERITAGE HIGH SCHOOL  
PLANT REPLACEMENT  
1150 FORESTVILLE ROAD  
WAKE FOREST, NORTH CAROLINA 27687

**NON-CONDENSING WATER BOILER SCHEDULE**

MARK	SERVICE	TYPE	MANUFACTURER / MODEL	HEATING WATER				BURNER				DIMENSIONS AND WEIGHT				NOTES				
				EWT (F)	LWT (F)	FLOW (GPM)	WPD (FT H2O)	MANUFACTURER / MODEL	FUEL TYPE	PRESSURE (IN WC)	MIN. COMB. EFF. (%)	INPUT (MBH)	OUTPUT (MBH)	ELECTRICAL MOTOR (HP)	VOLTAGE/PHASE		FOOTPRINT (FT x FT)	HEIGHT (FT)	FLUE DIAMETER (IN)	SHIPPING WEIGHT (LBS)
B-1	HEATING WATER	CAST-IRON SECTIONAL	WEIL-MCLAIN / 1688	150	180	285	2	WEBSTER / WJBJ2G-30	NAT. GAS	28	82%	5,155	4,283	3.0	208/3	44 x 131	65	24	9,525	1,2,3,4,5,6,7,8
B-2	HEATING WATER	CAST-IRON SECTIONAL	WEIL-MCLAIN / 1688	150	180	285	2	WEBSTER / WJBJ2G-30	NAT. GAS	28	82%	5,155	4,283	3.0	208/3	44 x 131	65	24	9,525	1,2,3,4,5,6,7,8

- NOTES:
- REFER TO SECTION 235223 FOR ADDITIONAL REQUIREMENTS.
  - PROVIDE 120V/1PH, 20A DEDICATED CONTROL CIRCUIT WITH MOTOR-RATED DISCONNECT SWITCH.
  - PROVIDE BURNER CONTROL PANEL AND DISCONNECT SWITCH. PROVIDE WITH LOW-HIGH-LOW-OFF (LHL) GAS CONTROL SYSTEM.
  - PROVIDE 6-INCH DEEP CONCRETE PAD THAT IS 4-INCHES LONGER AND WIDER THAN UNIT FOOTPRINT.
  - PROVIDE GAS REGULATOR AS REQUIRED FOR BOILER UTILIZATION PRESSURE. REGULATORS SHALL BE VENTED TO A SAFE LOCATION EXTERIOR TO THE BUILDING. VENTLESS REGULATORS WITH VENT LIMITERS ARE NOT ACCEPTABLE.
  - PROVIDE BALANCED DRAFT VENTING SYSTEM FOR EACH BOILER. COORDINATE WITH BOILER & VENT MANUFACTURER.
  - PROVIDE NEW GAS TRAIN (PILOT GAS REGULATOR, PILOT SOLENOID VALVE, RELIEF VALVES, MAIN GAS REGULATOR, MAIN GAS VALVE WITH PROOF OF CLOSURE, HIGH AND LOW GAS PRESSURE SWITCHES). ALL VENTS PIPED TO BUILDING EXTERIOR.
  - COMBUSTION EFFICIENCY IN ACCORDANCE WITH 10 CFR PART 431.

**PUMP SCHEDULE**

MARK	SERVICE	TYPE	MANUFACTURER / MODEL	SUCTION (IN DIA)	DISCHARGE (IN DIA)	IMPELLER (IN DIA)	FLOW (GPM)	HEAD (FT H2O)	EFF. (%)	SPEED (RPM)	BRAKE MOTOR (HP)	NOMINAL MOTOR (HP)	VOLTAGE/PHASE	STARTER/DSCNNCT MEANS	NOTES
PCHWP-1	PRIMARY CHW	SEPARATELY-COUPLED IN-LINE	TACO / KS5007D	5.0	5.0	6.6	410	35	85%	1760	4.3	7.5	480/3	MS/D	1,3,4,5,6,8
PCHWP-2	PRIMARY CHW	SEPARATELY-COUPLED IN-LINE	TACO / KS5007D	5.0	5.0	6.6	410	35	85%	1760	4.3	7.5	480/3	MS/D	1,3,4,5,6,8
PCHWP-3	PRIMARY CHW	SEPARATELY-COUPLED IN-LINE	TACO / KS5007D	5.0	5.0	6.6	410	35	85%	1760	4.3	7.5	480/3	MS/D	1,3,4,5,6,8
SCHWP-1	SECONDARY CHW	SEPARATELY-COUPLED IN-LINE	TACO / KS6013D	6.0	6.0	11.0	1035	105	81%	1760	34.0	50.0	480/3	VFD	1,2,3,4,5,6
SCHWP-2	SECONDARY CHW	SEPARATELY-COUPLED IN-LINE	TACO / KS6013D	6.0	6.0	11.0	1035	105	81%	1760	34.0	50.0	480/3	VFD	1,2,3,4,5,6
PHWP-1	PRIMARY HW	CLOSE-COUPLED IN-LINE	TACO / KV4009D	4.0	4.0	7.5	285	20	80%	1160	1.8	3.0	480/3	MS/D	1,3,4,5,6,7
PHWP-2	PRIMARY HW	CLOSE-COUPLED IN-LINE	TACO / KV4009D	4.0	4.0	7.5	285	20	80%	1160	1.8	3.0	480/3	MS/D	1,3,4,5,6,7
SHWP-1	SECONDARY HW	SEPARATELY-COUPLED IN-LINE	TACO / KS4013D	4.0	4.0	11.2	380	125	75%	1760	16.1	25.0	480/3	VFD	1,2,3,4,5,6
SHWP-2	SECONDARY HW	SEPARATELY-COUPLED IN-LINE	TACO / KS4013D	4.0	4.0	11.2	380	125	75%	1760	16.1	25.0	480/3	VFD	1,2,3,4,5,6

- NOTES:
- REFER TO SECTION 232123 FOR ADDITIONAL REQUIREMENTS.
  - PUMPS OPERATING IN PARALLEL SHALL BE SELECTED FOR PARALLEL OPERATION.
  - PUMPS STARTING AND DISCONNECTING MEANS AS SCHEDULED. (MRS = MOTOR RATED SWITCH; MS/D = COMBINATION MOTOR-STARTER AND DISCONNECT; AND VFD = VARIABLE FREQUENCY DRIVE)
  - PUMPS MOTOR SELECTION SHALL BE BASED ON NON-OVERLOADING SERVICE.
  - PROVIDE 4-INCH DEEP CONCRETE PAD.
  - REFER TO PAD MOUNTED VERTICAL PUMP INSTALLATION DETAIL FOR INSTALLATION REQUIREMENTS.
  - REFER TO FLOOR MOUNTED IN-LINE CIRCULATION PUMP DETAIL FOR INSTALLATION REQUIREMENTS.
  - PROVIDE FUSED DISCONNECT SWITCH. COORDINATE FUSE SIZE WITH ELECTRICAL CONTRACTOR.

**WATER HEATER SCHEDULE**

MARK	SERVICE / LOCATION	TYPE	MANUFACTURER / MODEL	NAT. GAS PRESSURE (IN WC)	TEMP. RISE (F)	TEMP. (F)	STORAGE CAPACITY (GALLONS)	CONTINUOUS RECOV RATE (GPH)	HEATING CAPACITY (MBH)	NATURAL GAS INPUT (MBH)	VOLTAGE/PHASE	NOTES
WH-1	BOILER RM	GAS TANKLESS	AO SMITH / GWH-500N	4 - 14	140	100	0	515	425	500	120/1	1,2,3,4,5,6,7,8,9
WH-2	BOILER RM	GAS TANKLESS	AO SMITH / GWH-500N	4 - 14	140	100	0	515	425	500	120/1	1,2,3,4,5,6,7,8,9
WH-3	BOILER RM	GAS TANKLESS	AO SMITH / GWH-500N	4 - 14	140	100	0	515	425	500	120/1	1,2,3,4,5,6,7,8,9

- NOTES:
- REFER TO SECTION 223400 FOR ADDITIONAL REQUIREMENTS.
  - RECOVERY RATES ARE BASED ON 100F TEMPERATURE RISE.
  - PROVIDE SINGLE-POINT ELECTRICAL CONNECTION, INTERMITTENT SPARK, AND FUSED-DISCONNECT SWITCH.
  - PROVIDE NEW CONCRETE PAD TO ACCOMMODATE WATER HEATERS AND EXPANSION TANKS. PAD SHALL BE 4-INCHES LONGER AND WIDER THAN COMBINED FOOTPRINT OF WATER HEATER.
  - PROVIDE PRESSURE REGULATOR FOR UTILIZATION PRESSURE. REGULATORS SHALL BE VENTED TO A SAFE LOCATION EXTERIOR TO THE BUILDING. VENTLESS REGULATORS WITH VENT LIMITERS ARE NOT ACCEPTABLE.
  - CONNECT TO EXISTING EXHAUST FLUE AND COMBUSTION INTAKE. UTILIZE SAME FLUE AND INTAKE SIZE AND MATERIAL AS EXISTING TO MAKE CONNECTION.
  - FURNISH WITH INTEGRAL RECIRCULATION PUMP, 120V / 1 PH, 5.8 FLA, 30 GPM AT 20 FT HD.
  - PROVIDE WITH TEKMAR 268 EXTERNAL SEQUENCER.
  - PROVIDE FACTORY MOUNTED FLOW SWITCH.

**UNIT HEATER SCHEDULE**

MARK	SERVICE	TYPE	MANUFACTURER / MODEL	FAN		AIR		ELECTRIC			NOTES
				AIR FLOW (CFM)	EAT (F)	LAT (F)	CAPACITY (KW)	MCA (A)	VOLTAGE/PHASE		
EUH-6	BOILER ROOM 1729	HORIZONTAL UNIT HEATER	TRANE / UHEC-103DACA	700	50	95	10.0	20.0	480/3	1,2,3,4,5	
EUH-7	BOILER ROOM 1729	HORIZONTAL UNIT HEATER	TRANE / UHEC-103DACA	700	50	95	10.0	20.0	480/3	1,2,3,4,5	
EUH-8	BOILER ROOM 1729	HORIZONTAL UNIT HEATER	TRANE / UHEC-103DACA	700	50	95	10.0	20.0	480/3	1,2,3,4,5	

- NOTES:
- REFER TO SECTION 238239 FOR ADDITIONAL REQUIREMENTS.
  - PROVIDE MOTOR-RATED DISCONNECT SWITCH.
  - PROVIDE FACTORY-FABRICATED WALL/CEILING SUPPORT. INSTALL IN SAME LOCATION AS EXISTING.
  - PROVIDE WITH INTEGRAL THERMOSTAT.
  - PROVIDE SINGLE-STEP CONTROLLER FOR ELECTRIC COILS.

**EXPANSION TANK SCHEDULE**

MARK	SERVICE	TYPE	MANUFACTURER / MODEL	EXPANSION TANK			HYDRONIC SYSTEM			DIMENSIONS AND WEIGHT			NOTES
				TOTAL VOLUME (GALLONS)	ACCEPT VOLUME (GALLONS)	CHARGE PRESSURE (PSIG)	MAKEUP PRESSURE (PSIG)	RELIEF PRESSURE (PSIG)	INLET SIZE (IN DIA)	DIMENSIONS (IN DIA x IN)	WEIGHT (LBS)		
XT-1	HEATING WATER	BLADDER	TACO / CA1000	264	264	17	18	50	1.5	36 x 79	790	1,3	
XT-2	HEATING WATER	BLADDER	TACO / CA1000	264	264	17	18	50	1.5	36 x 79	790	1,3	
XT-3	CHILLED WATER	BLADDER	TACO / CA450	119	119	17	18	50	1.5	24 x 77	400	1,2	

- NOTES:
- REFER TO SECTION 232116 FOR ADDITIONAL REQUIREMENTS.
  - PROVIDE 4-INCH DEEP CONCRETE PAD.
  - CONCRETE PAD EXISTING TO REMAIN.

**GRAVITY ROOF VENTILATOR SCHEDULE**

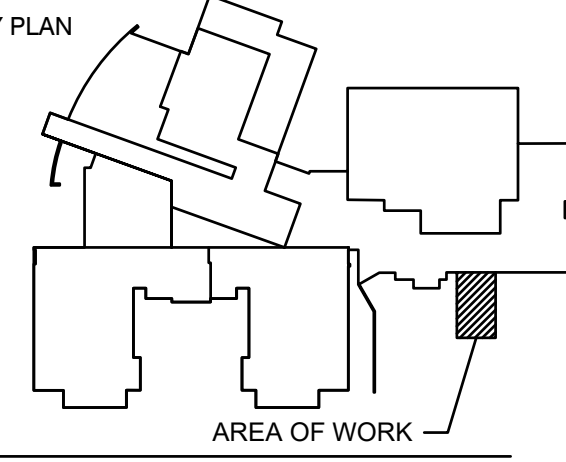
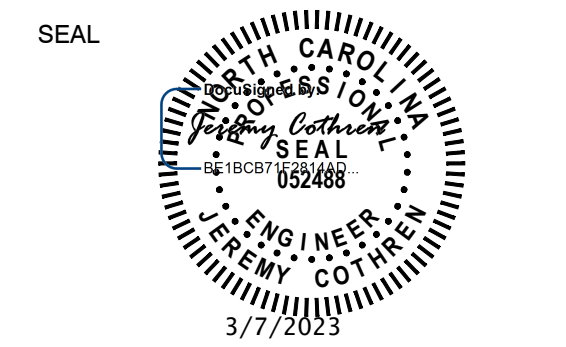
MARK	SERVICE	TYPE	MANUFACTURER / MODEL	AIR FLOW (CFM)	APD (IN WG)	VENT. SIZE (IN x IN)	THROAT SIZE (IN x IN)	MAX. HEIGHT (IN)	ROOF OPENING (IN x IN)	DAMPER TYPE	NOTES
GV-1	BOILER COMBUSTION	LOW-PROFILE HOOD	GREENHECK / FGI-44x80	5000	0.010	92 x 123	44 x 80	40	46.5 x 82.5	NONE	1,2

- NOTES:
- REFER TO SECTION 233723 FOR ADDITIONAL REQUIREMENTS.
  - PROVIDE FACTORY-FABRICATED ROOF CURB. COORDINATE EXACT LOCATION OF ROOF OPENINGS AND STRUCTURAL SUPPORT. COORDINATE WITH ROOFING ENGINEER.

**AIR SEPARATOR SCHEDULE**

MARK	SERVICE	TYPE	MANUFACTURER / MODEL	WATER FLOW (GPM)	MAX WPD (FT H2O)	DIMENSIONS (IN DIA x IN)	WEIGHT (LBS)	NOTES
AS-1	HEATING WATER	COALESCING AIR & SEDIMENT	TACO / 490BADR-125	580	3	18 x 42	630	1,2,3,4,6
AS-2	CHILLED WATER	COALESCING AIR & SEDIMENT	TACO / 4910ADHR-125	1640	2	30 x 87	1,130	1,2,3,4,5,6

- NOTES:
- REFER TO SECTION 232116 FOR ADDITIONAL REQUIREMENTS.
  - PROVIDE MANUAL BLOWDOWN VALVE.
  - PROVIDE AUTOMATIC AIR VENT.
  - PROVIDE REMOVABLE COVER.
  - PROVIDE HIGH VELOCITY SERIES.
  - WATER FLOW RATE BASED ON SECONDARY LOOP CONNECTED LOAD.



SCALE

No.	DATE	BY	Description
1	3/7/2023	JC	ADDENDUM NO 2

REVISIONS

DRAWN BY: KER  
APPROVED BY: JC  
CHECKED BY: JMT  
DATE: FEBRUARY 10, 2023

**MECHANICAL SCHEDULES**

PROJECT NO. 50159355

**M6.01**

SHEET NO.