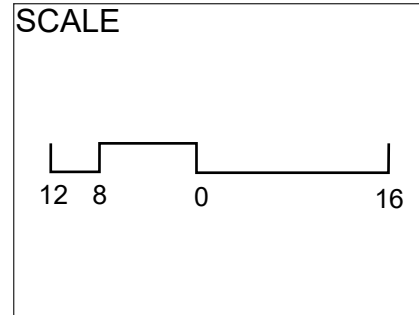
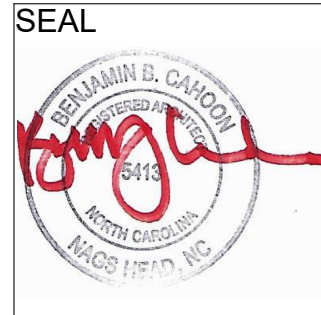
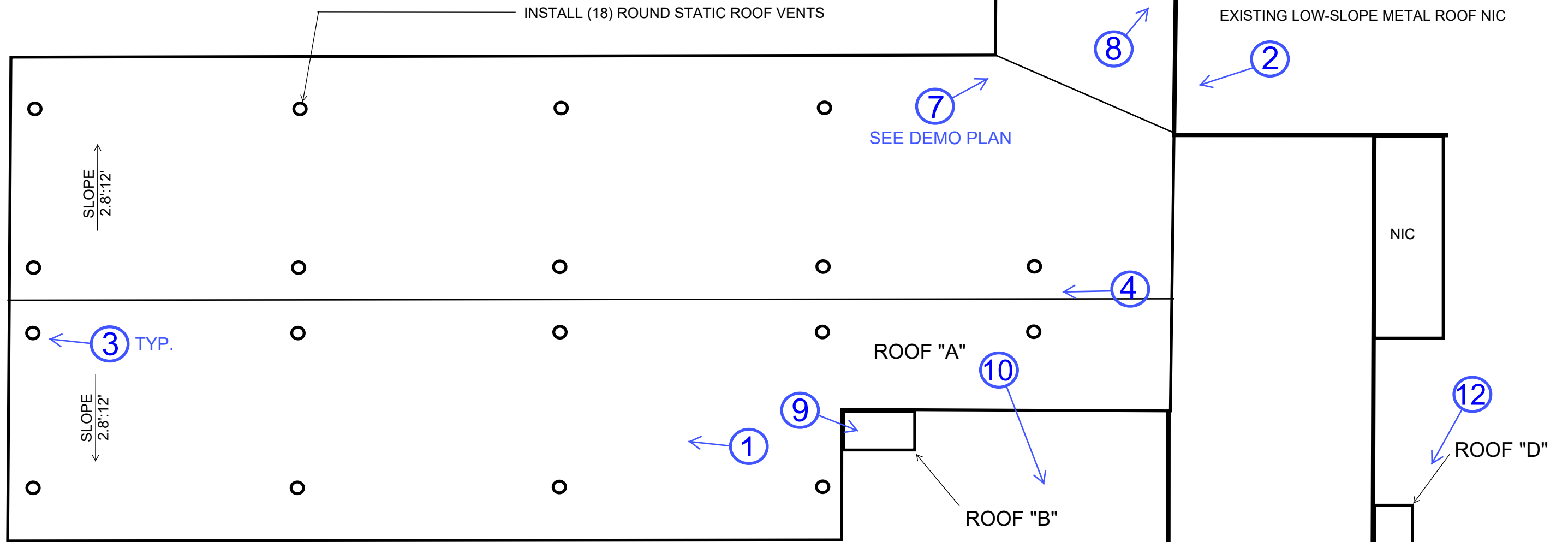


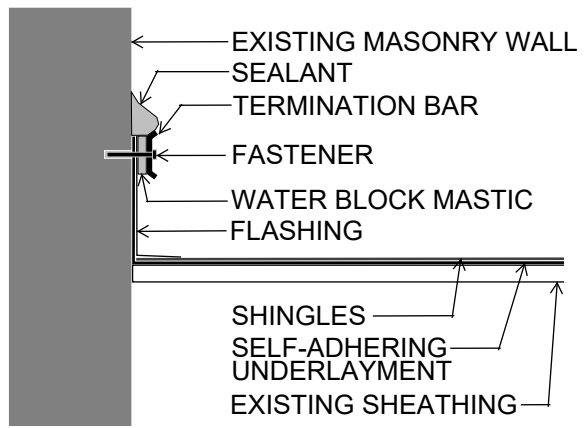
HYDE COUNTY SCHOOLS CENTRAL OFFICE
PARTIAL RE-ROOFING PLAN
 O.A. PEAY CAMPUS
 1430 MAIN STREET, SWAN QUARTER, NC 27885
 CAHOON AND KASTEN ARCHITECTS, PC
 BEN CAHOON, FAIA, PRINCIPAL ARCHITECT
 118 W. WOODHILL DRIVE
 NAGS HEAD, NC 27959
 252-441-0271 office@obxarchitects.com



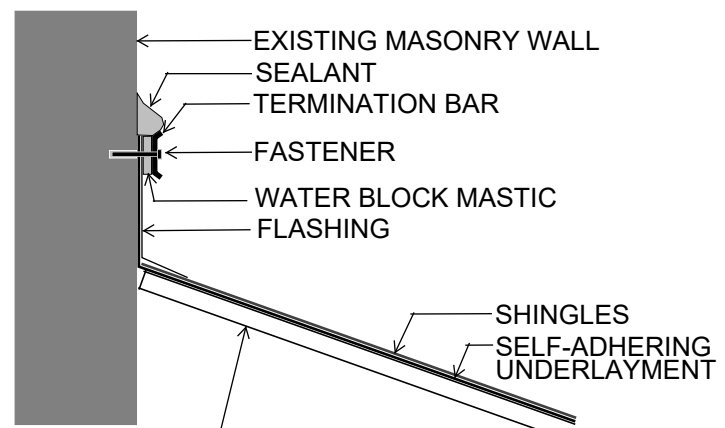
REV. 2/28/23 TO ADD PHOTO LOCATIONS



ROOF PLAN +/- 1/6" = 1'-0"



ROOF TO WALL AT SIDE No Scale



ROOF TO WALL AT TOP No Scale

Hyde County Schools Central Office Roof Replacement

Roof A, photo #1



Roof A, photo #2



Roof A, photo #3 (typical for all)



Roof A, photo #4



Roof A, photo #5



Roof A, photo #6



Roof A, photo #7



Roof A, photo #8



Roof B, photo #9



Roof C, photo #10



Roof C, photo #11



Roof D, photo #12



Roof D, photo #13

