

WORKSTATION UPFIT FOR NCDMV IRP

NORTH CAROLINA DIVISION OF MOTOR VEHICLES 1425 ROCK QUARRY ROAD, SUITE 100 RALEIGH, NORTH CAROLINA 27610

ARCHITECT: FACILITIES DESIGN UNIT NCDOT FACILITIES DESIGN MANAGEMENT DIVISION 1 SOUTH WILMINGTON STREET RALEIGH, NC 27601

2018 APPENDIX B BUILDING CODE SUMMARY FOR ALL COMMERCIAL PROJECTS (EXCEPT 1 AND 2-FAMILY DWELLINGS AND TOWNSHOUSES)

Name of Project: WORKSTATION UPFIT FOR NCDMV IRP OFFICE
 Address: 1425 ROCK QUARRY ROAD, SUITE 100 RALEIGH, NC 27610
 Owner/Authorized Agent: MARK DOUGLAS GOSWAM Phone # 919-707-4500 E-Mail: gdouglas@ncdot.gov
 Drawn By: [Redacted] Design # [Redacted] City: [Redacted] State: [Redacted]
 Civil Engineering Indication: [Redacted] Yes No

DATE: 8/27/22 NAME: [Redacted] LICENSE # [Redacted]
 EXPIRES: 8/27/23 PROJECT NO.: [Redacted]
 SHEET NO.: [Redacted] TOTAL SHEETS: [Redacted]
 DESIGNER: [Redacted] CHECKED BY: [Redacted]
 DRAWN BY: [Redacted] DATE: [Redacted]

2018 NC EXISTING BUILDING CODE: EXISTING Prescriptive Chapter 14
 RENEWED: (date) 8/28 CURRENT OCCUPANCY(S) (CL. 3): 2012-B-BUREAU
 RISK CATEGORY (Table 1604.5): 1 Proposed: I II III IV

2018 NC BUILDING CODE: New Building Addition Renovation
 Second: Contact the local jurisdiction for possible additional
 Placed: Contact the local jurisdiction for possible additional

WIND	WIND SPEED (Mph)	WIND PRESSURE (psf)	WIND FORCE (psf)	WIND LOAD (psf)
1	35	0.06	2.1	2.1
2	40	0.10	3.2	3.2
3	45	0.16	4.8	4.8
4	50	0.23	6.5	6.5
5	55	0.31	8.2	8.2
6	60	0.40	10.0	10.0
7	65	0.50	11.8	11.8
8	70	0.61	13.6	13.6
9	75	0.73	15.5	15.5
10	80	0.86	17.4	17.4

ALLOWABLE HEIGHT	ALLOWABLE AREA	EXPOSURE CATEGORY	OVER EXPOSURE	OVER EXPOSURE AREA
10' - 30'	10,000 sq ft	I	100%	100%
30' - 40'	12,000 sq ft	II	80%	80%
40' - 50'	15,000 sq ft	III	60%	60%
50' - 60'	20,000 sq ft	IV	40%	40%
60' - 70'	25,000 sq ft	V	20%	20%
70' - 80'	30,000 sq ft	VI	10%	10%
80' - 90'	35,000 sq ft	VII	5%	5%
90' - 100'	40,000 sq ft	VIII	2%	2%
100' - 150'	50,000 sq ft	IX	1%	1%

PERCENTAGE OF WALL OPENING CALCULATIONS	ALLOWABLE AREA	EXPOSURE CATEGORY	OVER EXPOSURE	OVER EXPOSURE AREA
0% - 10%	10,000 sq ft	I	100%	100%
10% - 20%	12,000 sq ft	II	80%	80%
20% - 30%	15,000 sq ft	III	60%	60%
30% - 40%	20,000 sq ft	IV	40%	40%
40% - 50%	25,000 sq ft	V	20%	20%
50% - 60%	30,000 sq ft	VI	10%	10%
60% - 70%	35,000 sq ft	VII	5%	5%
70% - 80%	40,000 sq ft	VIII	2%	2%
80% - 90%	45,000 sq ft	IX	1%	1%
90% - 100%	50,000 sq ft	X	0%	0%

MECHANICAL DESIGN	EXISTING - NO CHANGE	EXISTING - NO CHANGE
MECHANICAL SYSTEMS, SERVICE SYSTEMS AND EQUIPMENT	MECHANICAL DESIGN	MECHANICAL DESIGN
Thermal Zone	Thermal Zone	Thermal Zone
Interior design conditions	Interior design conditions	Interior design conditions
Mechanical equipment	Mechanical equipment	Mechanical equipment
Lit equipment	Lit equipment	Lit equipment

MECHANICAL SYSTEMS, SERVICE SYSTEMS AND EQUIPMENT	EXISTING - NO CHANGE	EXISTING - NO CHANGE
Thermal Zone	Thermal Zone	Thermal Zone
Interior design conditions	Interior design conditions	Interior design conditions
Mechanical equipment	Mechanical equipment	Mechanical equipment
Lit equipment	Lit equipment	Lit equipment

MECHANICAL DESIGN	EXISTING - NO CHANGE	EXISTING - NO CHANGE
MECHANICAL SYSTEMS, SERVICE SYSTEMS AND EQUIPMENT	MECHANICAL DESIGN	MECHANICAL DESIGN
Thermal Zone	Thermal Zone	Thermal Zone
Interior design conditions	Interior design conditions	Interior design conditions
Mechanical equipment	Mechanical equipment	Mechanical equipment
Lit equipment	Lit equipment	Lit equipment

MECHANICAL DESIGN	EXISTING - NO CHANGE	EXISTING - NO CHANGE
MECHANICAL SYSTEMS, SERVICE SYSTEMS AND EQUIPMENT	MECHANICAL DESIGN	MECHANICAL DESIGN
Thermal Zone	Thermal Zone	Thermal Zone
Interior design conditions	Interior design conditions	Interior design conditions
Mechanical equipment	Mechanical equipment	Mechanical equipment
Lit equipment	Lit equipment	Lit equipment

MECHANICAL DESIGN	EXISTING - NO CHANGE	EXISTING - NO CHANGE
MECHANICAL SYSTEMS, SERVICE SYSTEMS AND EQUIPMENT	MECHANICAL DESIGN	MECHANICAL DESIGN
Thermal Zone	Thermal Zone	Thermal Zone
Interior design conditions	Interior design conditions	Interior design conditions
Mechanical equipment	Mechanical equipment	Mechanical equipment
Lit equipment	Lit equipment	Lit equipment

MECHANICAL DESIGN	EXISTING - NO CHANGE	EXISTING - NO CHANGE
MECHANICAL SYSTEMS, SERVICE SYSTEMS AND EQUIPMENT	MECHANICAL DESIGN	MECHANICAL DESIGN
Thermal Zone	Thermal Zone	Thermal Zone
Interior design conditions	Interior design conditions	Interior design conditions
Mechanical equipment	Mechanical equipment	Mechanical equipment
Lit equipment	Lit equipment	Lit equipment

PERCENTAGE OF WALL OPENING CALCULATIONS	ALLOWABLE AREA	EXPOSURE CATEGORY	OVER EXPOSURE	OVER EXPOSURE AREA
0% - 10%	10,000 sq ft	I	100%	100%
10% - 20%	12,000 sq ft	II	80%	80%
20% - 30%	15,000 sq ft	III	60%	60%
30% - 40%	20,000 sq ft	IV	40%	40%
40% - 50%	25,000 sq ft	V	20%	20%
50% - 60%	30,000 sq ft	VI	10%	10%
60% - 70%	35,000 sq ft	VII	5%	5%
70% - 80%	40,000 sq ft	VIII	2%	2%
80% - 90%	45,000 sq ft	IX	1%	1%
90% - 100%	50,000 sq ft	X	0%	0%

MECHANICAL DESIGN	EXISTING - NO CHANGE	EXISTING - NO CHANGE
MECHANICAL SYSTEMS, SERVICE SYSTEMS AND EQUIPMENT	MECHANICAL DESIGN	MECHANICAL DESIGN
Thermal Zone	Thermal Zone	Thermal Zone
Interior design conditions	Interior design conditions	Interior design conditions
Mechanical equipment	Mechanical equipment	Mechanical equipment
Lit equipment	Lit equipment	Lit equipment

MECHANICAL DESIGN	EXISTING - NO CHANGE	EXISTING - NO CHANGE
MECHANICAL SYSTEMS, SERVICE SYSTEMS AND EQUIPMENT	MECHANICAL DESIGN	MECHANICAL DESIGN
Thermal Zone	Thermal Zone	Thermal Zone
Interior design conditions	Interior design conditions	Interior design conditions
Mechanical equipment	Mechanical equipment	Mechanical equipment
Lit equipment	Lit equipment	Lit equipment

MECHANICAL DESIGN	EXISTING - NO CHANGE	EXISTING - NO CHANGE
MECHANICAL SYSTEMS, SERVICE SYSTEMS AND EQUIPMENT	MECHANICAL DESIGN	MECHANICAL DESIGN
Thermal Zone	Thermal Zone	Thermal Zone
Interior design conditions	Interior design conditions	Interior design conditions
Mechanical equipment	Mechanical equipment	Mechanical equipment
Lit equipment	Lit equipment	Lit equipment

NOT FOR CONSTRUCTION

CONSTRUCTION DOCUMENTS
 MARK DOUGLAS GOSWAM
 REGISTERED PROFESSIONAL ENGINEER
 No. 8894
 State of North Carolina
 M. CHITDALE

NCDOT FACILITIES DESIGN UNIT
 ARCHITECT & ENGINEERS
 1 SOUTH WILMINGTON STREET
 RALEIGH, NORTH CAROLINA 27601
 PHONE: 919/707-4540 FAX 919/715-0399

STATE CONSTRUCTION
 22-25138-01A
 ASSET NUMBER: [Redacted]
 COL # [Redacted] SIZE # [Redacted] BLDG # [Redacted]
 REVISIONS: [Redacted]
 NO. DATE

DATE ISSUED: 4/22/22
 DRAWN BY: ADG
 CHECKED BY: MDG
 SHEET NO.
G1

**Workstation Upfit for
NCDMV IRP Office**
 1425 ROCK QUARRY ROAD, SUITE 100
 RALEIGH, NORTH CAROLINA 27610

ROOM FINISH SCHEDULE

MARK	ROOM NAME	FLOOR	BASE	WALLS					CEILING	REMARKS
				NORTH	WEST	SOUTH	EAST	FINISH		
L01	LOBBY	CONC	FINISH	FINISH	FINISH	FINISH	FINISH	FINISH	FINISH	ACT G-2H NOTE 9
L02	WAITING	CONC	FINISH	FINISH	FINISH	FINISH	FINISH	FINISH	FINISH	ACT G-2H NOTE 9
O09	OFFICE	CONC	FINISH	FINISH	FINISH	FINISH	FINISH	FINISH	FINISH	ACT G-2H NOTE 9
O04	OFFICE	CONC	FINISH	FINISH	FINISH	FINISH	FINISH	FINISH	FINISH	ACT G-2H NOTE 9
O03	CONFERENCE ROOM	CONC	FINISH	FINISH	FINISH	FINISH	FINISH	FINISH	FINISH	ACT G-2H NOTE 9
L07	OFFICE	CONC	FINISH	FINISH	FINISH	FINISH	FINISH	FINISH	FINISH	ACT G-2H NOTE 9
L08	OFFICE	CONC	FINISH	FINISH	FINISH	FINISH	FINISH	FINISH	FINISH	ACT G-2H NOTE 9
L09	OFFICE	CONC	FINISH	FINISH	FINISH	FINISH	FINISH	FINISH	FINISH	ACT G-2H NOTE 9
L10	OFFICE AREA	CONC	FINISH	FINISH	FINISH	FINISH	FINISH	FINISH	FINISH	ACT G-2H NOTE 9
L11	OFFICE AREA	CONC	FINISH	FINISH	FINISH	FINISH	FINISH	FINISH	FINISH	ACT G-2H NOTE 9
L12	OFFICE AREA	CONC	FINISH	FINISH	FINISH	FINISH	FINISH	FINISH	FINISH	ACT G-2H NOTE 9
L13	OFFICE AREA	CONC	FINISH	FINISH	FINISH	FINISH	FINISH	FINISH	FINISH	ACT G-2H NOTE 9
L14	OFFICE AREA	CONC	FINISH	FINISH	FINISH	FINISH	FINISH	FINISH	FINISH	ACT G-2H NOTE 9
L15	OFFICE AREA	CONC	FINISH	FINISH	FINISH	FINISH	FINISH	FINISH	FINISH	ACT G-2H NOTE 9
L16	OFFICE AREA	CONC	FINISH	FINISH	FINISH	FINISH	FINISH	FINISH	FINISH	ACT G-2H NOTE 9
L17	OFFICE AREA	CONC	FINISH	FINISH	FINISH	FINISH	FINISH	FINISH	FINISH	ACT G-2H NOTE 9
L18	OFFICE AREA	CONC	FINISH	FINISH	FINISH	FINISH	FINISH	FINISH	FINISH	ACT G-2H NOTE 9
L19	OFFICE AREA	CONC	FINISH	FINISH	FINISH	FINISH	FINISH	FINISH	FINISH	ACT G-2H NOTE 9
L20	OFFICE AREA	CONC	FINISH	FINISH	FINISH	FINISH	FINISH	FINISH	FINISH	ACT G-2H NOTE 9
L21	OFFICE AREA	CONC	FINISH	FINISH	FINISH	FINISH	FINISH	FINISH	FINISH	ACT G-2H NOTE 9
L22	OFFICE AREA	CONC	FINISH	FINISH	FINISH	FINISH	FINISH	FINISH	FINISH	ACT G-2H NOTE 9

DOOR & FRAME SCHEDULE

DOOR NO.	DOOR		FRAME		FINISH	REMARKS
	TYPE	SIZE	MAT.	FINISH		
1	V	9'-0"X7'-0"X1/4"	CONC	59N	D	ENTRANCE W/
2	F	9'-0"X7'-0"X1/4"	CONC	59N	—	ENTRANCE W/
3	V	9'-0"X7'-0"X1/4"	CONC	59N	—	ENTRANCE W/
4	H	9'-0"X7'-0"X1/4"	CONC	59N	D	ENTRANCE W/
5	H	9'-0"X7'-0"X1/4"	CONC	59N	D	ENTRANCE W/
6	H	9'-0"X7'-0"X1/4"	CONC	59N	D	ENTRANCE W/
7	V	9'-0"X7'-0"X1/4"	CONC	59N	D	ENTRANCE W/

* REMOVE BY ALLOWANCE - SEE SPECIFICATION SECTION 03100.
** SEE SPECIFICATION SECTION 05105 FOR FINISH REQUIREMENTS.

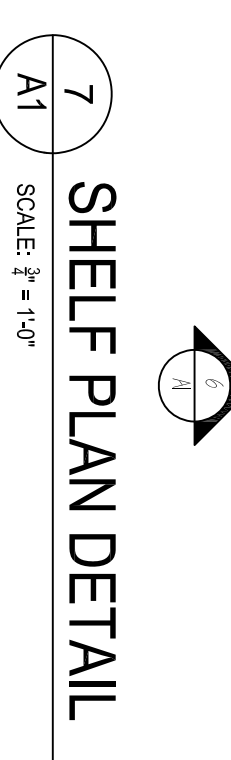
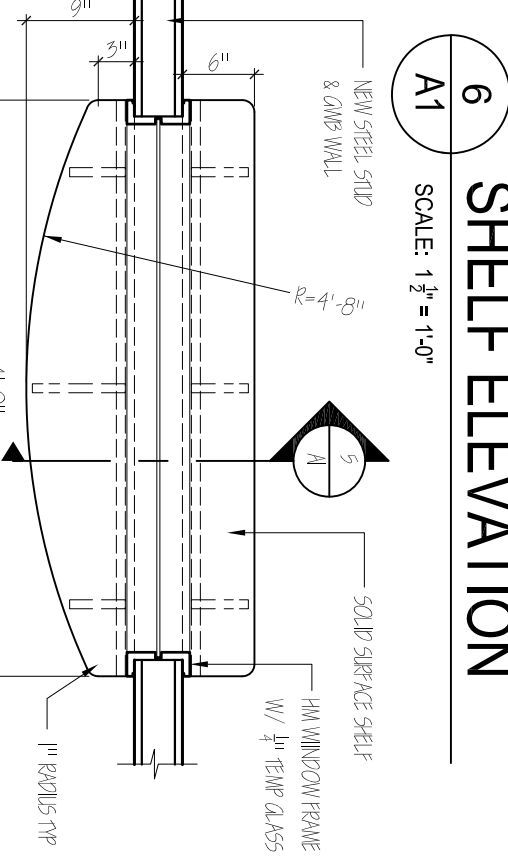
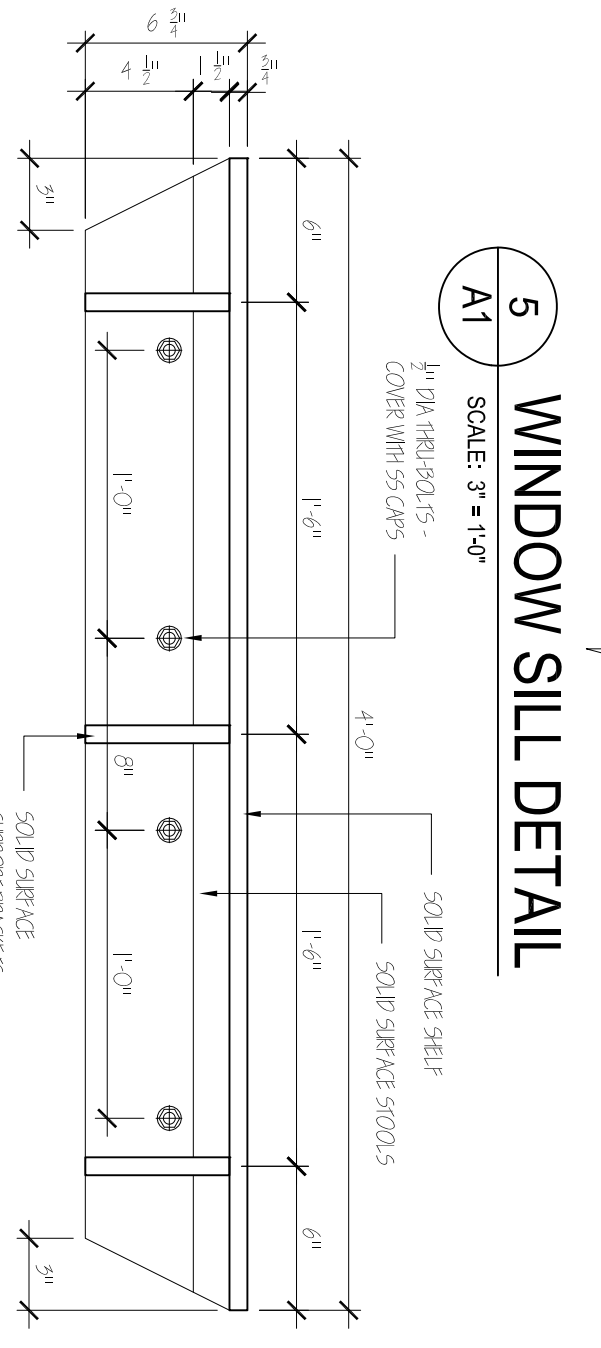
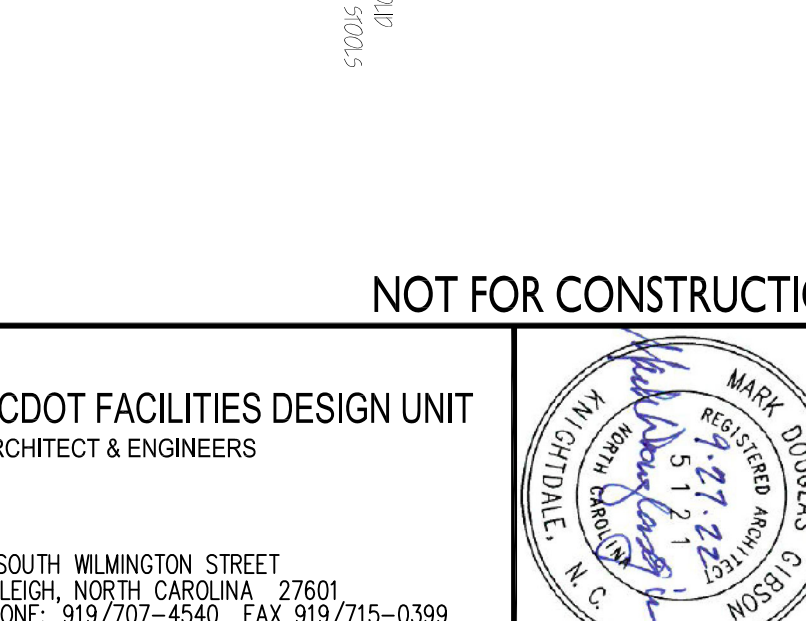
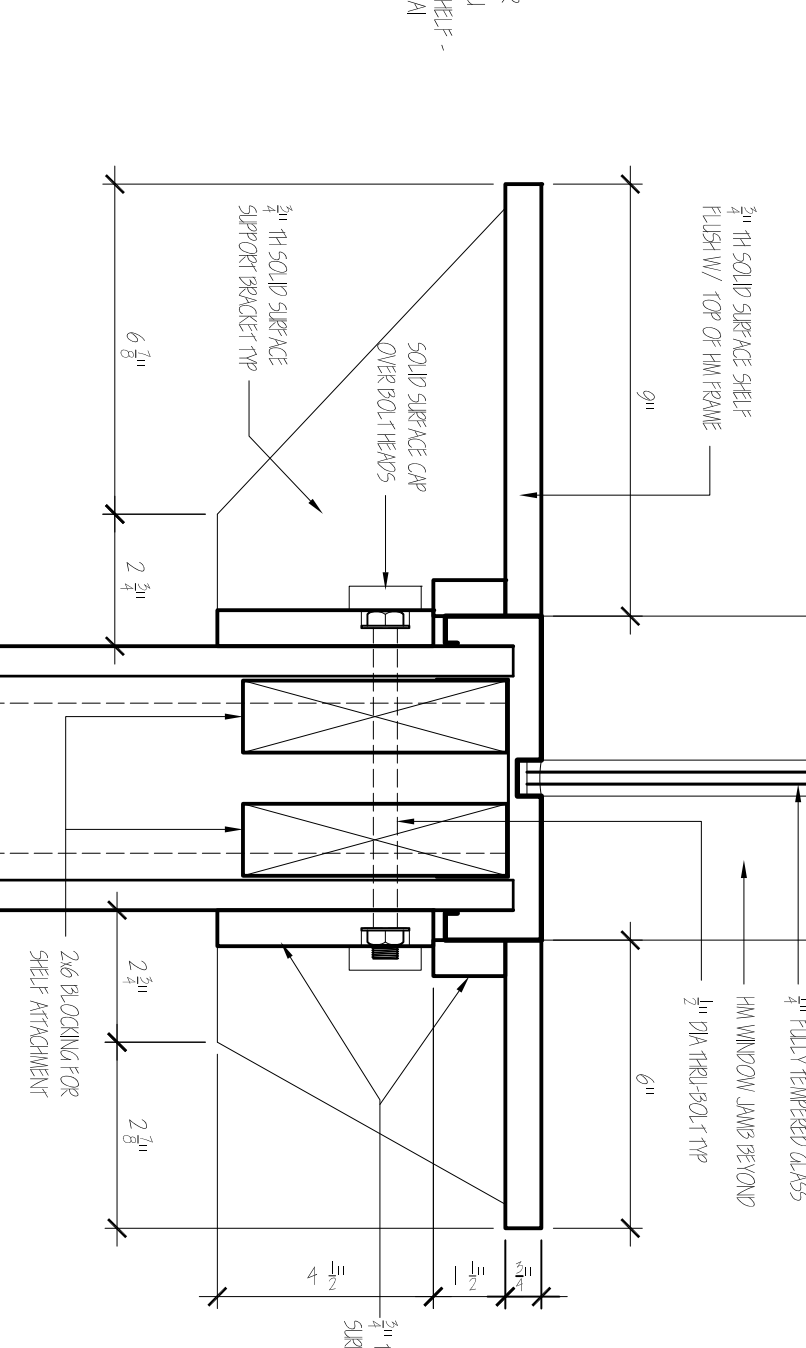
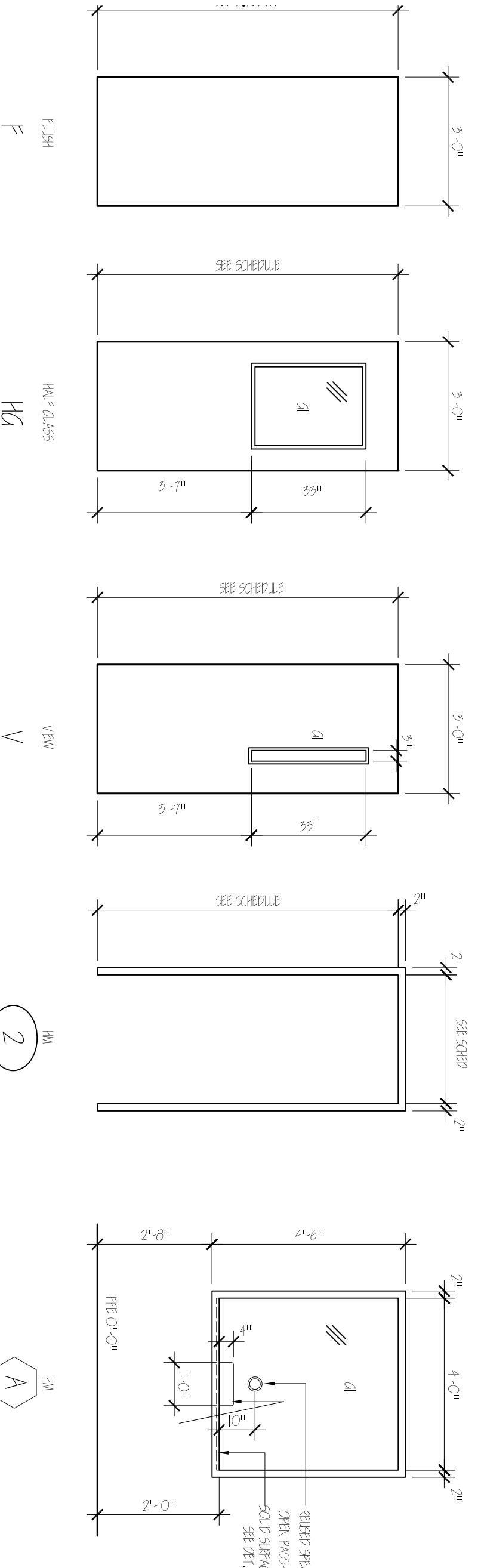
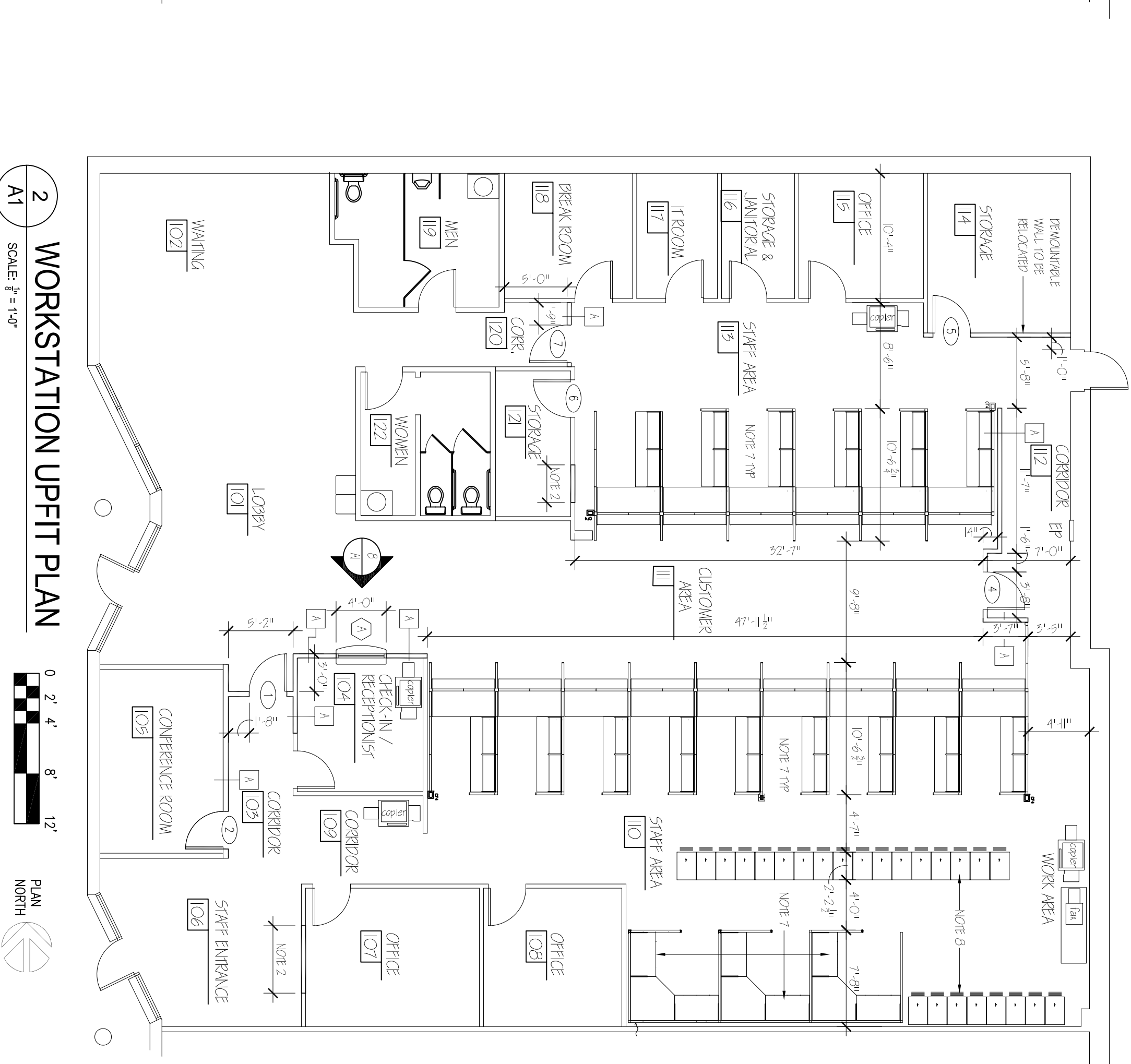
GLASS SCHEDULE

MARK	DESCRIPTION
G1	1/4" EMERALD SHEET GLASS

ABBREVIATIONS
 5NG STAINLESS METAL GRP
 5CW SOLID CORE WOOD
 5EBR ENAMELED
 5FAC FACTORY FINISH
 5FE FINISH LOCKER ELEVATION
 5GW GRASSM WALL BOARD

GENERAL NOTES:

- REMOVE REMOVABLE PARTITION PANELS AND STORE NEARLY FOR RE-USE. PROTECT WHEREAS REQUIRED TO PREVENT DAMAGE DURING CONSTRUCTION OPERATIONS.
- REMOVE ALL REMOVABLE PARTITION PANELS TO BE RELOCATED AND REINSTALL BY NEIGHBOR.
- REMOVE ALL GLASS PARTITION PANELS TO BE RELOCATED AND REINSTALL BY NEIGHBOR.
- REMOVE ALL GLASS PARTITION PANELS TO BE RELOCATED AND REINSTALL BY NEIGHBOR.
- REMOVE ALL GLASS PARTITION PANELS TO BE RELOCATED AND REINSTALL BY NEIGHBOR.
- REMOVE ALL GLASS PARTITION PANELS TO BE RELOCATED AND REINSTALL BY NEIGHBOR.
- REMOVE ALL GLASS PARTITION PANELS TO BE RELOCATED AND REINSTALL BY NEIGHBOR.
- REMOVE ALL GLASS PARTITION PANELS TO BE RELOCATED AND REINSTALL BY NEIGHBOR.
- REMOVE ALL GLASS PARTITION PANELS TO BE RELOCATED AND REINSTALL BY NEIGHBOR.
- REMOVE ALL GLASS PARTITION PANELS TO BE RELOCATED AND REINSTALL BY NEIGHBOR.



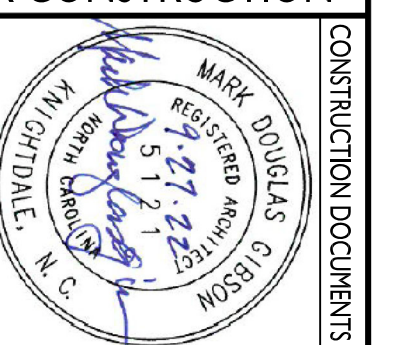
STATE CONSTRUCTION			
ASSET NUMBER:	22-25738-01A	CAD. SITE #	BLDG.#
REVISIONS NO.	XX	DATE	XX

Workstation Upfit for NCDMV IRP Office
 1425 ROCK QUARRY ROAD, SUITE 100
 RALEIGH, NORTH CAROLINA 27610

TENANT SPACE DEMOLITION & WORKSTATION UPFIT PLANS, and DETAILS

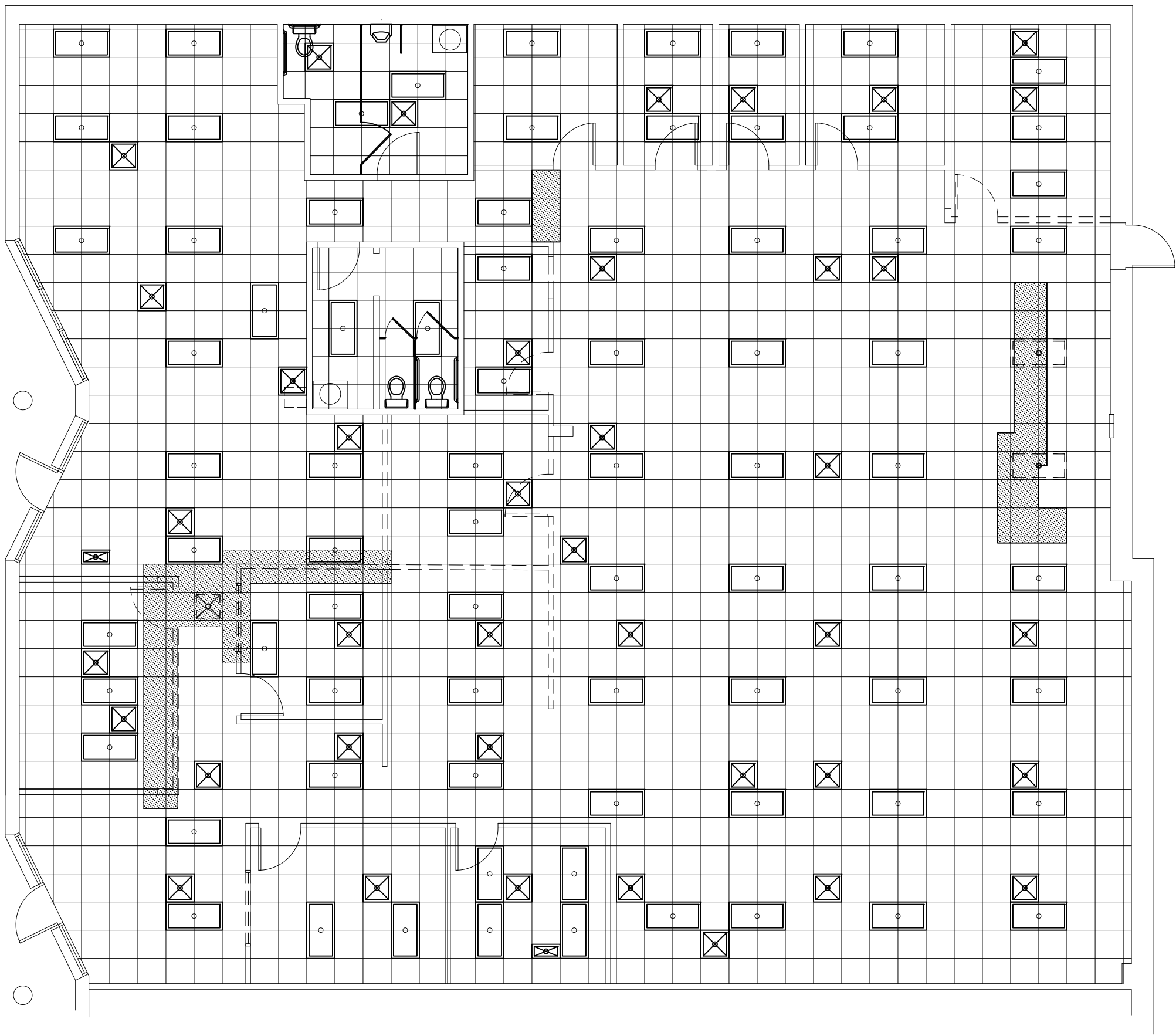
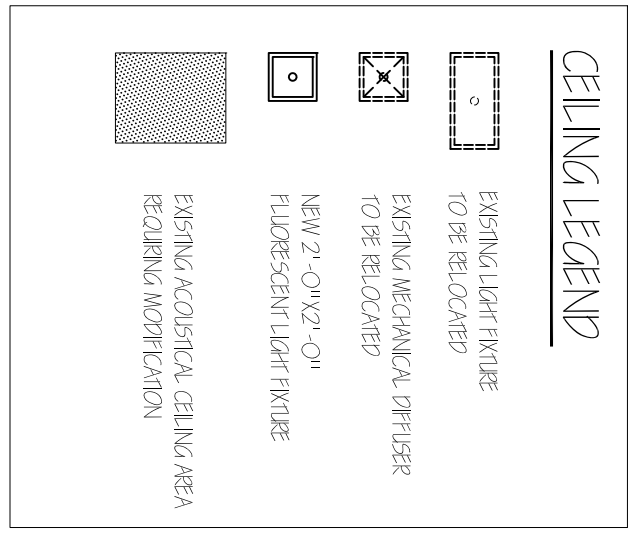


NCDOT FACILITIES DESIGN UNIT
 ARCHITECT & ENGINEERS
 1 SOUTH WILMINGTON STREET
 RALEIGH, NORTH CAROLINA 27601
 PHONE: 919/707-4540 FAX 919/715-0399

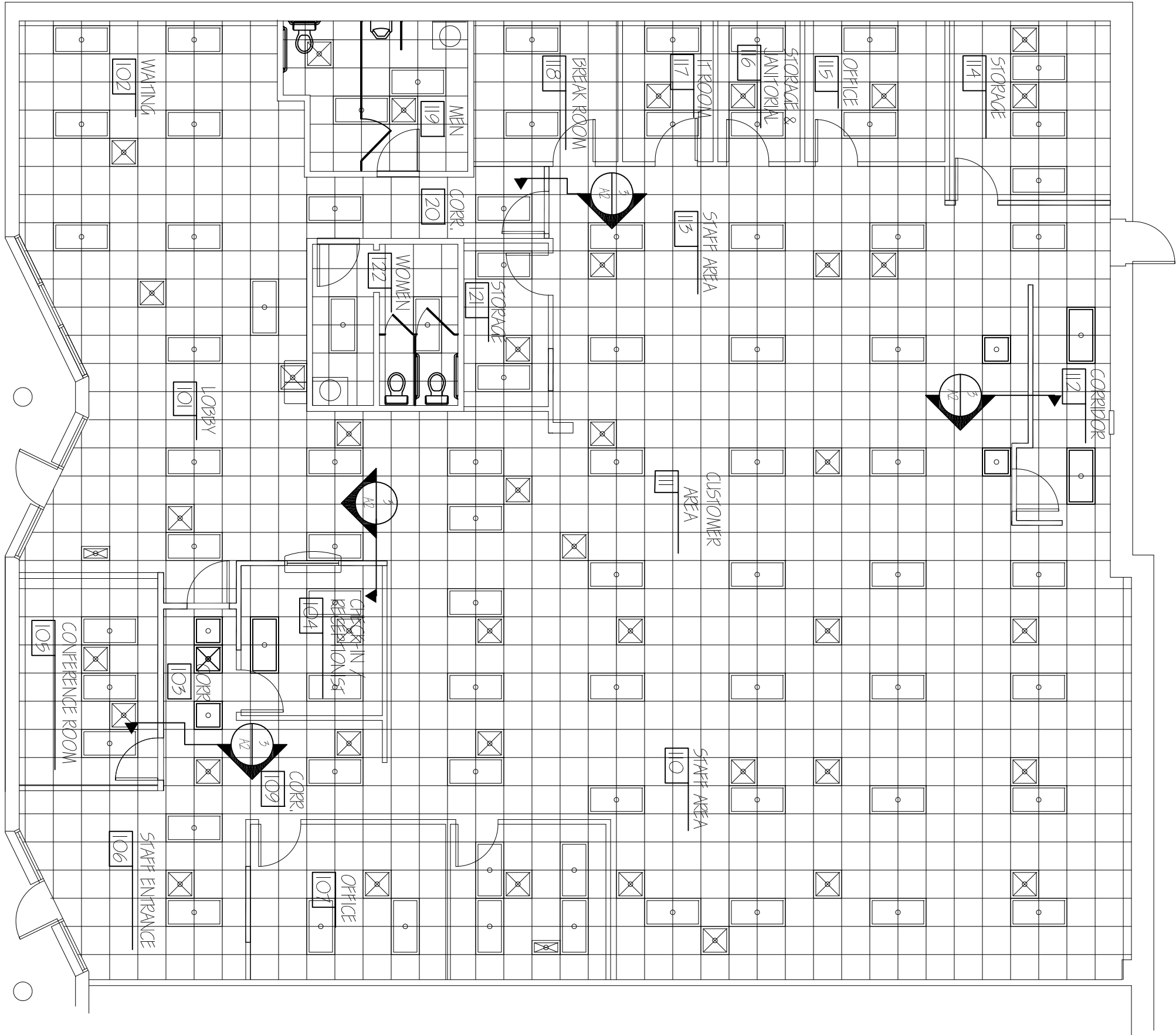


CEILING NOTES:

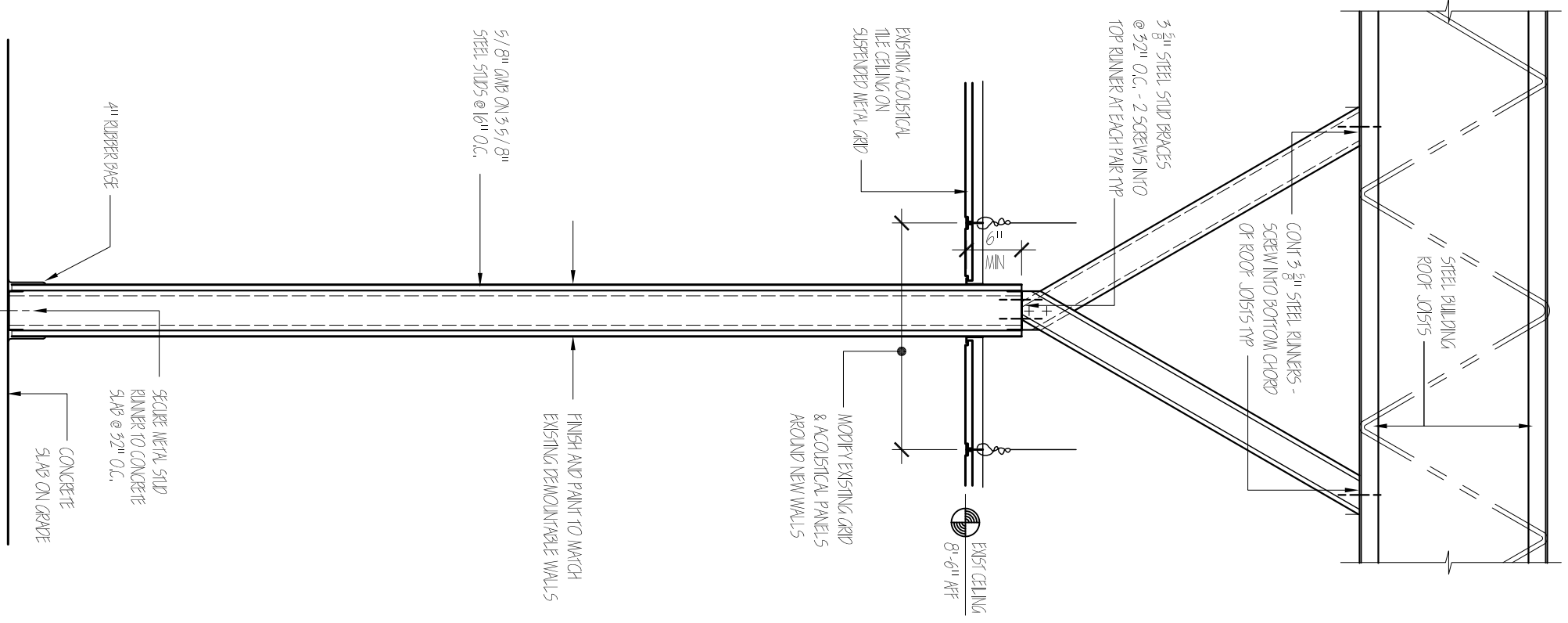
1. REMOVE EXISTING ACROUSTICAL CEILING IN ALL AREAS NOT SHOWN AS TO BE RELOCATED OR REMOVED.
2. REPAIR AND PATCH CEILING SHEETWORK TO MATCH EXISTING WALLS IN PLACE.
3. PROVIDE NEW WALL WALL TO MATCH EXISTING AND MATCH EXISTING AND ACROUSTICAL CEILING SHEETWORK TO MATCH EXISTING WALLS IN PLACE.
4. PROVIDE NEW WALL WALL TO MATCH EXISTING AND MATCH EXISTING AND ACROUSTICAL CEILING SHEETWORK TO MATCH EXISTING WALLS IN PLACE.
5. REPLACE ANY DAMAGED CEILING COMPONENTS WITH COMPONENTS TO MATCH.



1 EXISTING CEILING / DEMOLITION PLAN
 SCALE: 1/8" = 1'-0"
 PLAN NORTH



2 CEILING MODIFICATIONS PLAN
 SCALE: 1/8" = 1'-0"
 PLAN NORTH



3 WALL TYPE 'A'
 SCALE: 1/8" = 1'-0"

NOT FOR CONSTRUCTION

DATE ISSUED: 4/22/22
 DRAWN BY:
 CHECKED BY:
 SHEET NO.

Workstation Upfit for NCDMV IRP Office
 1425 ROCK QUARRY ROAD, SUITE 100
 RALEIGH, NORTH CAROLINA 27610

EXISTING CEILING / DEMOLITION PLAN, CEILING MODIFICATION PLAN, & WALL TYPE 'A'



NCDOT FACILITIES DESIGN UNIT
 ARCHITECT & ENGINEERS
 1 SOUTH WILMINGTON STREET
 RALEIGH, NORTH CAROLINA 27601
 PHONE: 919/707-4540 FAX 919/715-0399



CONSTRUCTION DOCUMENTS

DIVISION 15A — PLUMBING

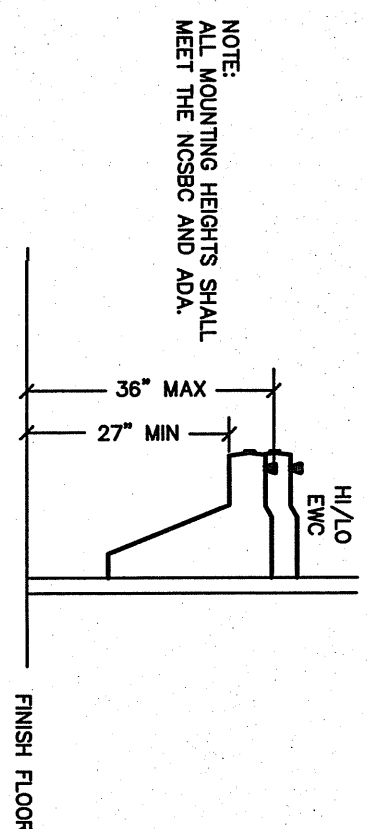
- 1.1 DESCRIPTION OF THE WORK**
- A. Work under this section includes but is not necessarily limited to, installing and testing the following equipment, materials, and systems:
 1. Cold and hot water piping and installation.
 2. Cold and hot water piping and installation.
 3. DWV piping.
 4. Connection of all equipment, drain, vent, and water.
 - B. All work under this contract shall be installed in compliance with the latest edition of the following codes and standards insofar as they apply:
 1. The National Electrical Code.
 2. 2019 N.C. Building Code, Plumbing and all applicable category codes.
 3. American Society of Sanitary Engineering Standard 1010.
 4. All local codes and ordinances.
 - C. These codes are minimum standards. If codes require a more restrictive standard than the specifications herein, the codes shall govern.
 - D. The Plumbing Contractor shall be licensed in the State of North Carolina and have all local licenses required for the work.
- 1.2 INTENT**
- A. The intent of these specifications and accompanying drawings is to convey as reasonably as possible the requirements for a complete job ready for the building to operate. The Plumbing Contractor shall take this into consideration when preparing the bid. The Contractor shall allow him to provide minor pieces of equipment and labor not specifically indicated but required for the job to operate properly, at no additional cost to the Owner. The PC shall determine and coordinate with existing conditions.
- 1.3 COORDINATION**
- A. Coordinate work with other contractors. Notify Architect of apparent conflicts early to expedite construction. If structural damage appears imminent, stop work and notify the Architect immediately.
 - B. Locations shown are approximate. The Plumbing Contractor shall refer to the architectural drawings for placement of equipment, fixtures, etc. Where locations are not clear, the Contractor shall obtain the exact locations from the Architect.
 - C. Coordinate all exterior piping connections w/Architect, site contractor/owner. All exterior piping shall be installed in accordance with the Flood Level Lines are below next upstream manhole cover elevation. Fixtures with flood level lines are below next upstream manhole cover elevation. All exterior piping shall be installed in accordance with the Flood Level Lines are below next upstream manhole cover elevation. All exterior piping shall be installed in accordance with the Flood Level Lines are below next upstream manhole cover elevation.
- 1.4 SHOP DRAWINGS**
- A. Shop drawings shall be submitted for plumbing fixtures and for pipe, valves and shall have the manufacturer's standard catalog or literature attached.
- PART 2 — PRODUCTS**
- 2.1 FIXTURES**
- A. Each fixture shall be properly supported from the building structure or required to the end effect; that all fixtures and accessories will be held rigidly in place. Water pipes supplying the fixtures must also be held rigidly in place.
 - B. Provide loose key angle stops and chrome plated supply pipe writer supplies to fixtures.
 - C. All exposed piping traps and accessories for fixtures shall be chrome plated. Provide chrome plated escutcheon plates where pipes enter walls.
 - D. Refrigerator drawers, cabinet tops, and all other plumbing fixtures shall be chrome plated.
 - E. Provide trap primers for all floor drains in areas not served by floor sills.
- 2.2 PIPING**
- A. Drain-Waste-Vent: All DWV piping shall be Schedule 40 PVC-DWV u/c/n, installed in accordance with the specifications herein. Penetrations of roof wall/floor/ceilings, and in areas/voids adjacent to ceiling equipment exhaust hoods. Review Arch. and Mech. drawings.
 - B. Hot and cold water piping shall be installed in accordance with the specifications herein. Review Arch. and Mech. drawings.
 - C. Hot and cold water piping shall be installed in accordance with the specifications herein. Review Arch. and Mech. drawings.
 - D. Hot and cold water piping shall be installed in accordance with the specifications herein. Review Arch. and Mech. drawings.
 - E. Solder: 95/5, Lead free.
 - F. Unions: Provide unions where indicated on drawings. In long runs of piping (excess drainage) and at equipment to provide convenient disassembly. Provide electric unions where connecting copper tubing to equipment and piping made of ferrous materials.
- 2.3 CLEANOUTS**
- A. Heavy plugs in rough areas: Reamed plugs with cover plates in exposed locations.
- 2.4 SHOCK ABSORBERS**
- A. Provide shock absorbers as required by codes, manufacturer's recommendations and accepted industry standards for quality construction. Provide for all quick closing valves.
- PART 3 — EXECUTION**
- 3.1 CONNECTIONS**
- A. This contract includes complete connection of cold water, hot water, drainage, and vent piping as required. All fittings, valves, accessories, clamps, traps, etc. required to complete such connections shall be included.
 - B. The connection to water drains shall be made waterproof with a waterproofing compound. Floor drains shall be caulked into walls, and shall be secured in place by screwing down on threaded brass washers.
 - C. When water pipes connect to exposed chrome plated trim, use proper chrome plated washers.
- 3.2 SERVICE ACCESS**
- A. All valves and accessories shall be installed so that they can be properly serviced. In no case shall the Plumbing Contractor install equipment or other component in situations that do not meet code requirements or manufacturer's requirements. Provide access doors as required to access valves, etc.
- 3.3 ROUTING OF PIPING**
- A. Coordinate routing of piping with others, line up work trays to or at right angle to adjacent piping. Coordinate with others to coordinate routing of piping with others, line up work trays to or at right angle to adjacent piping. Coordinate with others to coordinate routing of piping with others, line up work trays to or at right angle to adjacent piping.

GENERAL NOTES — PLUMBING

1. FABRICATE ALL WORK PRIOR TO ORDERING, PURCHASING, OR DELIVERING ANY PART OF THE WORK DESCRIBED BY THIS DRAWING.
2. MANUFACTURE ALL WORK TO THE ENGINEER'S OR ARCHITECT'S REQUIREMENTS. NOTE: THE ENGINEER OR ARCHITECT'S REQUIREMENTS SHALL SUPERSEDE ANY MANUFACTURER'S REQUIREMENTS.
3. RESERVE ALL CONDUITS PRIOR TO INCORPORATING ANY MATERIAL OR LABOR EXPENSES.
4. COMPLY WITH THE MANUFACTURER'S TECHNICAL INSTRUCTIONS WHEN INSTALLING PLUMBING FIXTURES, MATERIALS, AND DEVICES.
5. LOCATE FIXTURES AND EQUIPMENT GENERALLY AS SHOWN ON THE DRAWING. PRESERVE ALL CODE-REQUIRED AND MANUFACTURER'S RECOMMENDED SERVICE CLEARANCES.
6. COORDINATE ROUTING OF ALL PIPING WITH BUILDING STRUCTURE AND OTHER TRADES. PROVIDE SUFFICIENT CLEARANCES AROUND BEAMS AND JOISTS AS NECESSARY.
7. ALL HANDICAP FIXTURES AND INSTALLATION OF HANDICAP FIXTURES SHALL CONFORM TO ADA REQUIREMENTS.

SYMBOL LEGEND — PLUMBING

SYMBOL	DESCRIPTION
---	WASTE PIPING (W)
---	VENT PIPING (V)
---	COLD WATER PIPING (CW)



PLUMBING FIXTURE SCHEDULE *

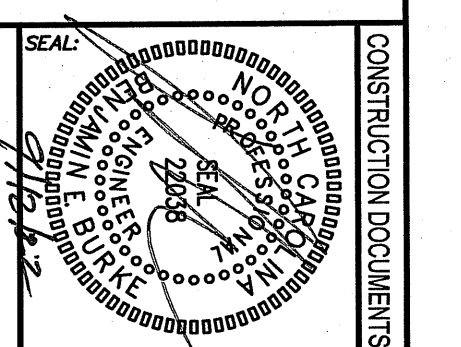
MARK	DESCRIPTION	ALTERNATE MANUFACTURER/MODEL	ALTERNATE MANUFACTURER/MODEL
EMC	HIGH/LOW ELECTRIC WATER COOLER BASES DUAL LEVEL ELECTRIC WATER COOLER MODEL # PAC25-ADN COMPLIANT PIPE TO SINGLE DRAIN AND SUPPLY LINE VENTY HIGH/LOW UNIT MOUNTING SHIP V/REPAIRS; COMPENSATE WAREL.	HASETT TAYLOR #HACBR-0	EMAY MODEL #E3TBLC

* OR APPROVED EQUAL

DRAWING TITLE / DISCRPTION:
PLUMBING SPECIFICATIONS

CONSULTANT:
ENGINEER:
BLURKE DESIGN GROUP, PC
CONSULTING ENGINEERS
3305-109 Durham Drive
Raleigh, North Carolina 27603
919.771.1916 fax: 919.779.0826
email: benburke@nc.rr.com
Corp. License # C-2652

DESIGNED BY:
NCDOT FACILITIES DESIGN UNIT
ARCHITECT & ENGINEERS
1 SOUTH WILMINGTON STREET
RALEIGH, NORTH CAROLINA 27601
PHONE 919/707-4540 FAX 919/715-0889



PROJECT TITLE:
Workstation Upfit for NCDMV IRP Office
1425 ROCK QUARRY ROAD
RALEIGH, NORTH CAROLINA 27610

STATE CONSTRUCTION ID # 22-0000-01A

EQUIPMENT NUMBER: 0000-0000-0000

REVISIONS:

NO.	DATE

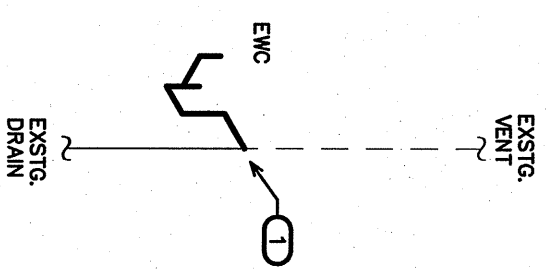
DATE ISSUED: 02/20/22
DRAWN BY: BJB
CHECKED BY: BJB

SHEET NO.
P1.0

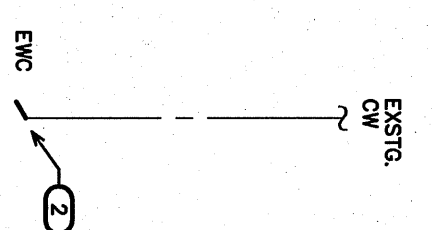
(VERIFY ALL EQUIPMENT REQUIREMENTS PRIOR TO RUSH-IN)

PIPE SIZING SCHEDULE	PIPE SIZING SCHEDULE			
	DRINK	WHT	OW	HW
(EWO) ELECTRIC WATER COOLER	1 1/4"	1 1/4"	1/2"	-

* PROVIDE BACKFLOW PREVENTER PER NSFIP-PLUMBING SECT. 608.3, EX. ASSE. 1024 (WATS SERIES 7 OR EQUAL), ASSE. 1022 (WATS SERIES 50-3 EQUAL), ETC., WHERE REQUIRED IF NOT AN INTEGRAL PART OF THE EQUIPMENT.



3 DWV RISER
SCALE NTS



4 WATER RISER
SCALE NTS

DWV/WATER RISER NOTES:
REPRESENTATIVE SIZES ARE GIVEN FOR EACH TYPE OF FIXTURE.
SEE PIPE SIZING SCHEDULE.
MINIMUM 2" DRAIN LINE SIZE UNDER SLAB.
MINIMUM PIPE SIZE SHOWN UNTIL LARGER SIZE IS REACHED.
PIPE SIZES ARE MINIMUMS FOR INDIVIDUAL FIXTURES ONLY.

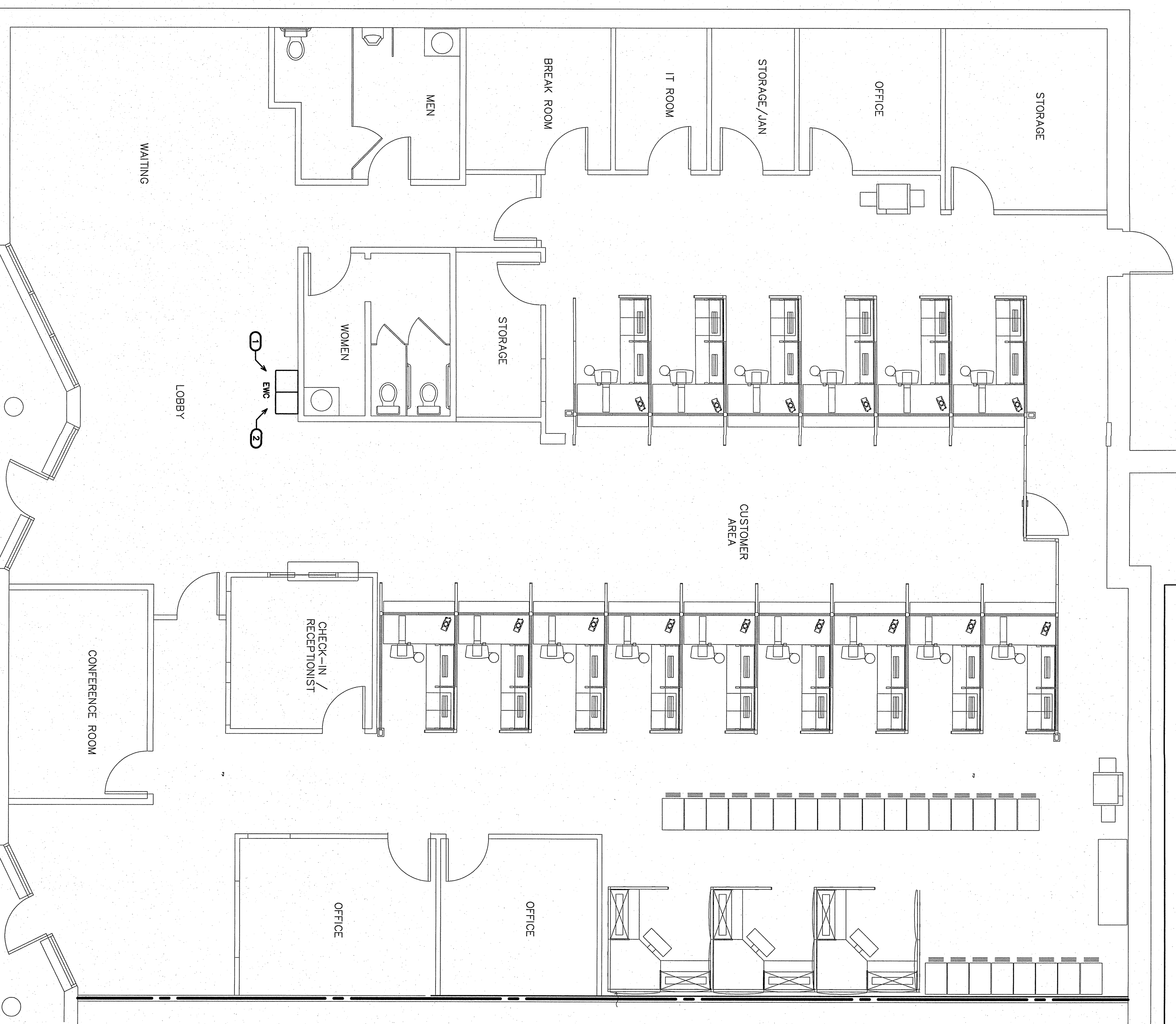
NOTE:
ANY EXISTING INFORMATION SHOWN ON THIS SHEET IS FROM FIELD INVESTIGATION, THE CONTRACTOR SHALL BE RESPONSIBLE FOR VERIFYING THE ACCURACY OF ALL EXISTING CONDITIONS, NOTIFY THE ENGINEER OF ANY DISCREPANCIES NOTED.
REMOVE AND REPLACE ALL CONCRETE, ASPHALT, WALL MATERIAL, CEILING, ETC., AS REQUIRED TO LOCATE EXISTING LINES AND INSTALL NEW LINES.
IT IS THE RESPONSIBILITY OF THE PLUMBING CONTRACTOR TO LOCATE ANY AND ALL EXISTING BUILDING SYSTEMS IN CONCRETE FLOORS, WALLS, CEILING, ETC., PRIOR TO START OF WORK, AND/OR MAINTAIN EXISTING SYSTEMS OPERATION. COORDINATE WITH BUILD. OWNER, ARCH, ETC. THE PLUMBING CONTRACTOR SHALL LOCATE, TRACE, AND INSPECT FOR PROPER DRAINAGE AND VENT LINES. ALL EXISTING VENT LINES SHALL BE EXTENDED TO THE ROOF OR TO THE EXISTING EXHAUST SYSTEM THROUGH USE OF CAMERA, DYES, AND/OR ANY MEANS NECESSARY. PRIOR TO THE START OF WORK, THE PLUMBING CONTRACTOR SHALL CONDUCT VISUAL INSPECTION OF EXISTING VENT LINES TO THE ROOF OR TO THE EXISTING EXHAUST SYSTEM. REPAIR, REPLACEMENT, OR ANY ADJUSTMENT OF DAMAGED VENT LINES SHALL BE THE RESPONSIBILITY OF THE PLUMBING CONTRACTOR. ALL REPAIRS AND REPLACEMENTS SHALL BE COORDINATED WITH THE BUILDING SYSTEMS ENGINEER. ALL NEW PLUMBING SHALL BE INSTALLED AND TESTED IN ACCORDANCE WITH THE NATIONAL PLUMBING CODE AND LOCAL ORDINANCES. ALL NEW PLUMBING SHALL BE INSTALLED AND TESTED FOR PROPER OPERATION. PROVIDE AS-BUILT DRAWINGS FOR ENGINEER REVIEW.
REMOVE ALL UNUSED CW AND HW LINES/TUBS-OUTS, ETC., AND CAP LINES BEHIND FINAL FINISHES. TEST EXISTING BACKFLOW PREVENTER AND REPLACE IF REQUIRED.
REMOVE UNUSED VENT LINES TO ABOVE CEILING AND CAP AT MAN. REMOVE UNUSED DRAIN STUB-OUTS AND PROVIDE CLEANNETS AT FINAL FINISHES TO PREVENT RELEASURES AS REQUIRED BY CODE. COORDINATE WORK WITH BUILDING OWNER SO AS NOT TO IMPACT NORMAL OPERATIONS OR OPERATIONS OF ANY ADJACENT SPACES/LEVELS. NIGHT AND WEEKEND WORK MAY BE REQUIRED.



1 EXISTING/DEMO PLAN
SCALE 3/16"=1'-0"

EXISTING TO BE REMOVED.
 EXISTING TO REMAIN.

KEY NOTE FOR DRAWING 2/P2.0
 ELECTRIC WATER COOLER TO BE REMOVED.



2 WORKSTATION UPFIT PLAN
SCALE 3/16"=1'-0"

EXISTING OR NON-PLUMBING ITEM (BOLD)
 NEW PLUMBING ITEM (LIGHT)

KEY NOTES FOR DRAWING 2/P2.0
 CONNECT NEW EWC TO EXISTING DWV IN AREA AS SHOWN. REMOVE EXISTING EWC AS REQUIRED PER PIPE SIZING SCHEDULE. THIS WORK SHALL BE COORDINATED WITH THE BUILDING SYSTEMS ENGINEER. VERIFY THE EXISTING WATS IS REQUIRED PER PIPE SIZING SCHEDULE. THIS WORK SHALL BE COORDINATED WITH THE BUILDING SYSTEMS ENGINEER.
 REMOVE UNIT, EXTEND/PROVIDE PIPING AS SHOWN. PROVIDE BACKFLOW PREVENTER AS REQUIRED PER PIPE SIZING SCHEDULE. THIS WORK SHALL BE COORDINATED WITH THE BUILDING SYSTEMS ENGINEER.
 CONNECT NEW EWC TO EXISTING CW IN AREA OF WORKSTATION UPFIT AS SHOWN. PROVIDE RE-PIPE FUTURE SUPPLY TO NEAREST EXISTING CW MAN IF NECESSARY/AS REQUIRED.

CONSULTANT:

ENGINEER
BURKE DESIGN GROUP, PA
CONSULTING ENGINEERS
3305-109 Durham Drive
Raleigh, North Carolina 27603
919.771.1916 fax: 919.779.0826
email: benburke@nc.rr.com
Corp. License # C-2652

DESIGNED BY:

NC DOT FACILITIES DESIGN INSTITUTE
ARCHITECT & ENGINEERS
1 SOUTH WILMINGTON STREET
RALEIGH, NORTH CAROLINA 27601
PHONE: 919/707-6540 FAX 919/715-0306



DRAWING TITLE / DESCRIPTION:

EXISTING/DEMO & WORKSTATION UPFIT PLUMBING PLAN

PROJECT TITLE:

Workstation Upfit for
NCDMV IRP Office

1425 ROCK QUARRY ROAD
RALEIGH, NORTH CAROLINA 27610

STATE CONSTRUCTION
ID# 22-00000-01A

EQUIPMENT NUMBER:
0000-0000-0000

REVISIONS
NO. DATE

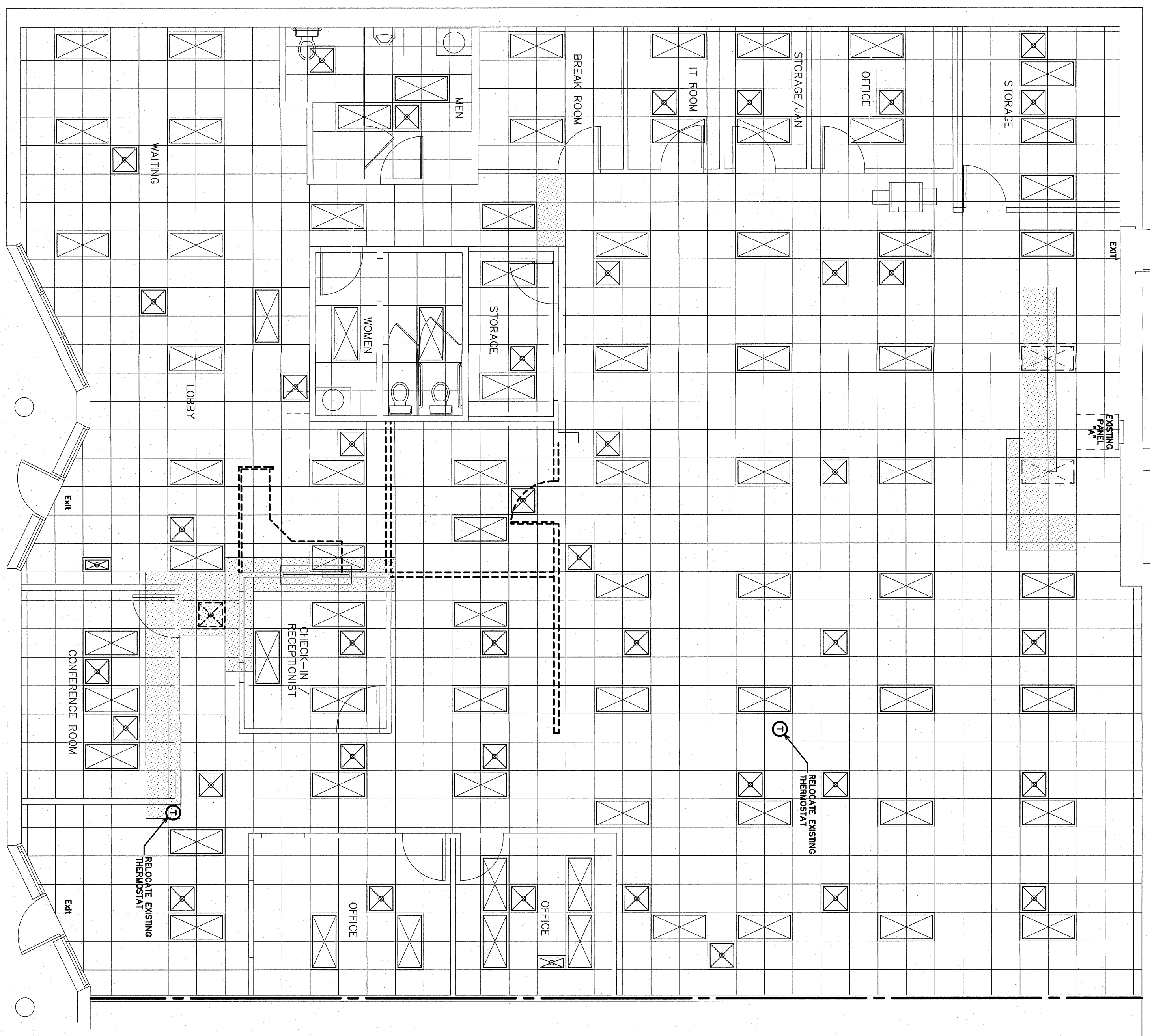
NO. DATE

DATE ISSUED: 08/29/22
DRAWN BY: JES
CHECKED BY: BEB

SHEET NO.

P2.0

NOTE:
 THE INFORMATION SHOWN ON THIS DRAWING IS FROM A FIELD INVESTIGATION. ALL RELEVANT INFORMATION
 THE SUBMISSION OF A BID INDICATES ACCEPTANCE OF EXISTING CONDITIONS. MAINTAIN ALL EXISTING CIRCUITS
 BEING USED. NOTIFY THE ENGINEER OF ANY DISCREPANCIES NOTED.



NC DWG (RP - A4)

WALL LEGEND

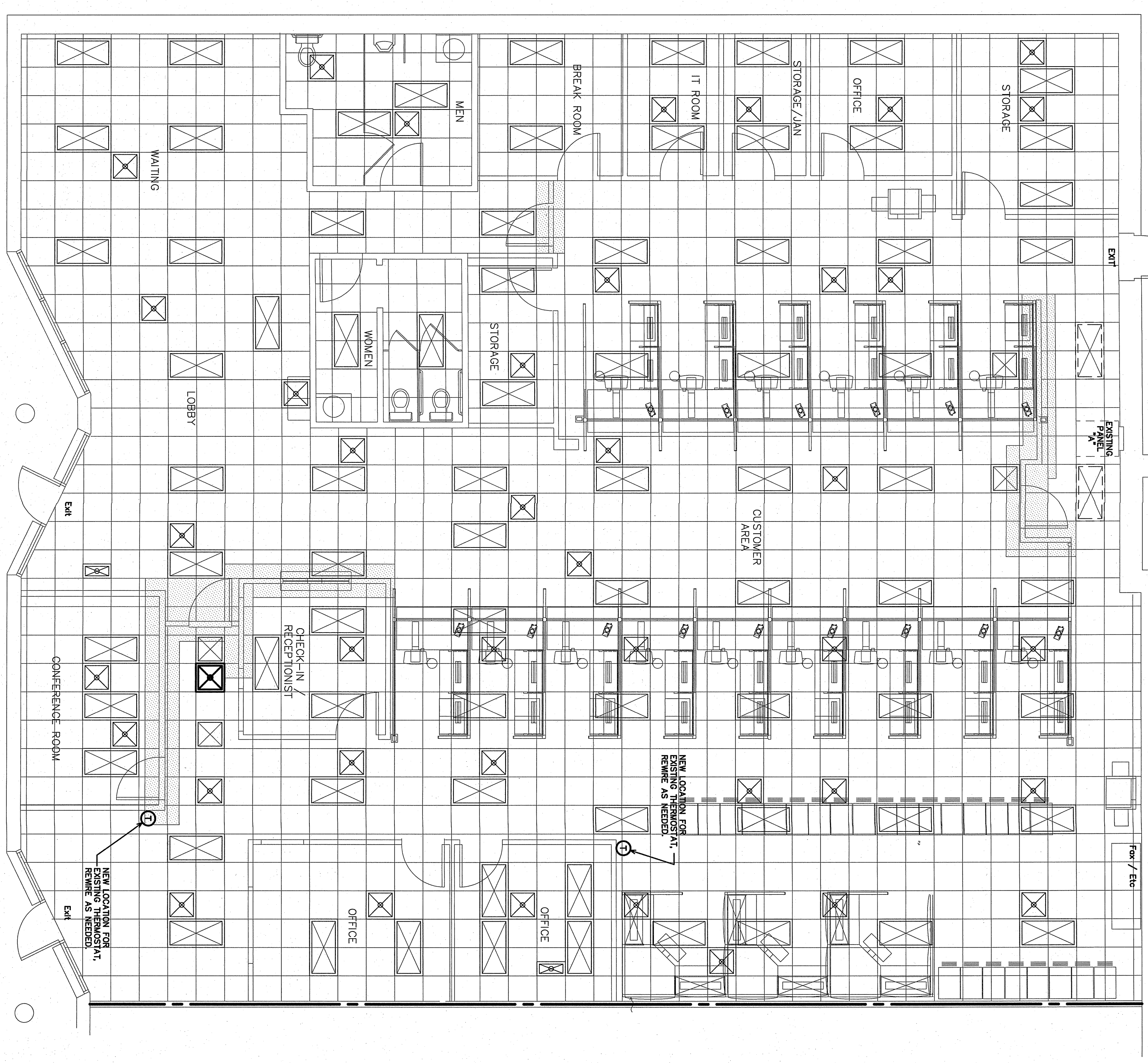
EXISTING SUPPLY GRILLE TO REMAIN IN PLACE

EXISTING WALL TO REMAIN

EXISTING WALL TO BE REMOVED

RELOCATE EXISTING THERMOSTAT

2 EXISTING/DEMO HVAC PLAN
 SCALE 3/16"=1'-0"



NC DWG (RP - A4)

WALL LEGEND

EXISTING SUPPLY GRILLE TO REMAIN IN PLACE

NEW WALL/EXISTING WALL TO REMAIN

1-HOUR FIRE BARRIER

NEW LOCATION FOR EXISTING SUPPLY GRILLE. PROVIDE EXTENDED FLEX DUCT AS NEEDED. SEE 2/A.1.0

RELOCATE EXISTING THERMOSTAT

1 WORKSTATION UPFIT HVAC PLAN
 SCALE 3/16"=1'-0"

M1.0

DATE ISSUED:	08/29/22
DRAWN BY:	CSJ
CHECKED BY:	BBP
SHEET NO.	

PROJECT TITLE:
Workstation Upfit for NCDMV IRP Office
 1425 ROCK QUARRY ROAD
 RALEIGH, NORTH CAROLINA 27610

DRAWING TITLE / DESCRIPTION:
EXISTING/DEMO & WORKSTATION UPFIT PLAN

CONSULTANT:
 ENGINEER
BLURKE DESIGN GROUP, PA
 CONSULTING ENGINEERS
 3305-109 Durham Drive
 Raleigh, North Carolina 27603
 919.771.1916 fax: 919.779.0826
 email: benburke@nc.rr.com
 Corp. License # C-2652

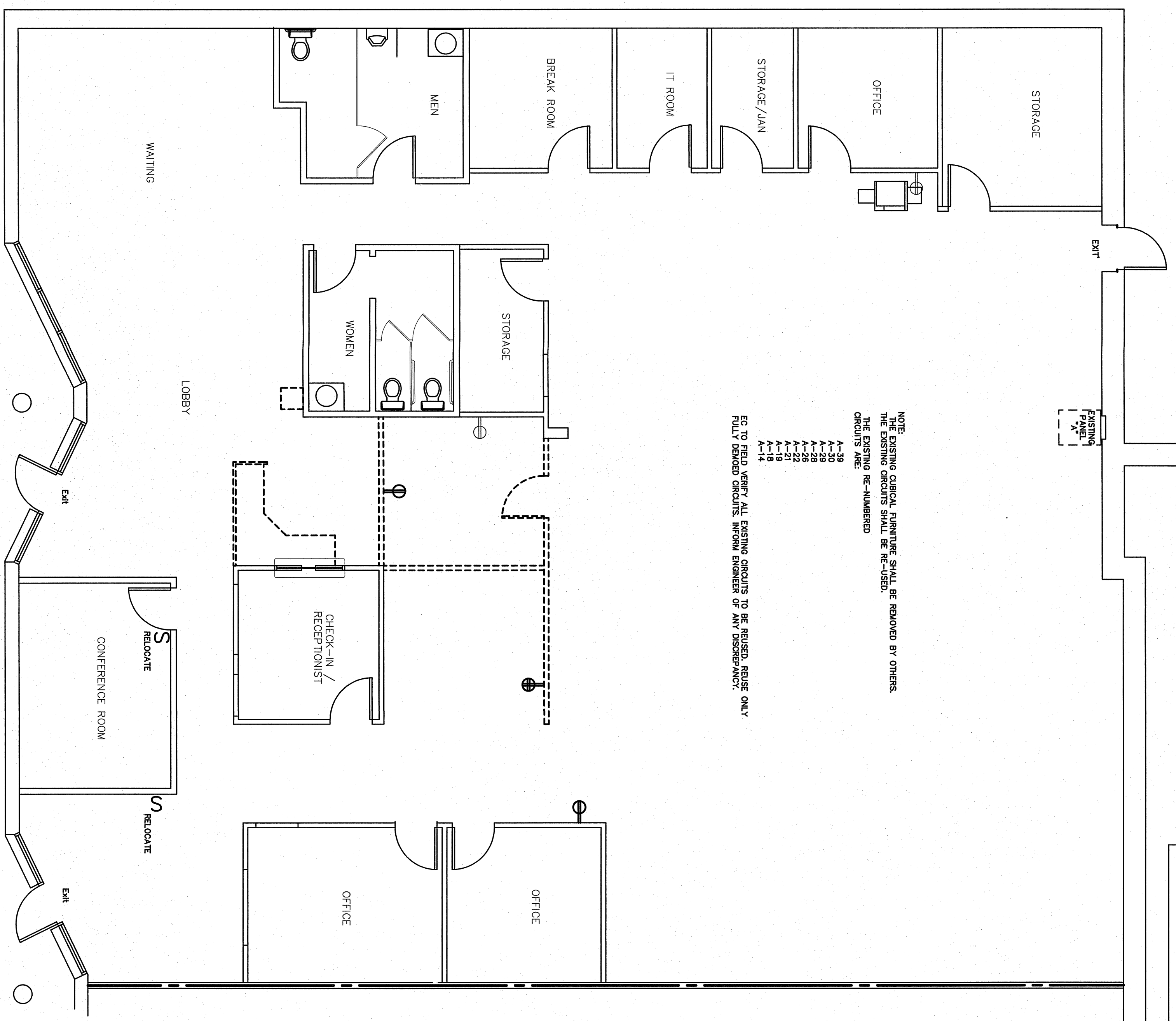
DESIGNED BY:
NCDOT FACILITIES DESIGN UNIT
 ARCHITECT & ENGINEERS
 1 SOUTH WASHINGTON STREET
 RALEIGH, NORTH CAROLINA 27601
 PHONE: 919/707-4540 FAX: 919/715-0390

CONSTRUCTION DOCUMENTS

SEAL: [Professional Engineer Seal]

NOTE:
 THE INFORMATION SHOWN ON THIS DRAWING IS FROM A FIELD INVESTIGATION. ALL RELEVANT INFORMATION
 THE SUBMISSION OF A BID INDICATES ACCEPTANCE OF EXISTING CONDITIONS. MAINTAIN ALL EXISTING CIRCUITS
 BEING USED. NOTIFY THE ENGINEER OF ANY DISCREPANCIES NOTED.

NOTE:
 THE EXISTING OFFICE FURNITURE SHALL BE REMOVED BY OTHERS.
 THE EXISTING OFFICES SHALL BE RE-USE.
 THE EXISTING RE-NUMBERED
 CIRCUITS ARE:
 A-30
 A-28
 A-26
 A-22
 A-18
 A-14
 EC TO FIELD VERIFY ALL EXISTING CIRCUITS TO BE REUSED. REUSE ONLY
 FULLY RATED CIRCUITS. INFORM ENGINEER OF ANY DISCREPANCY.

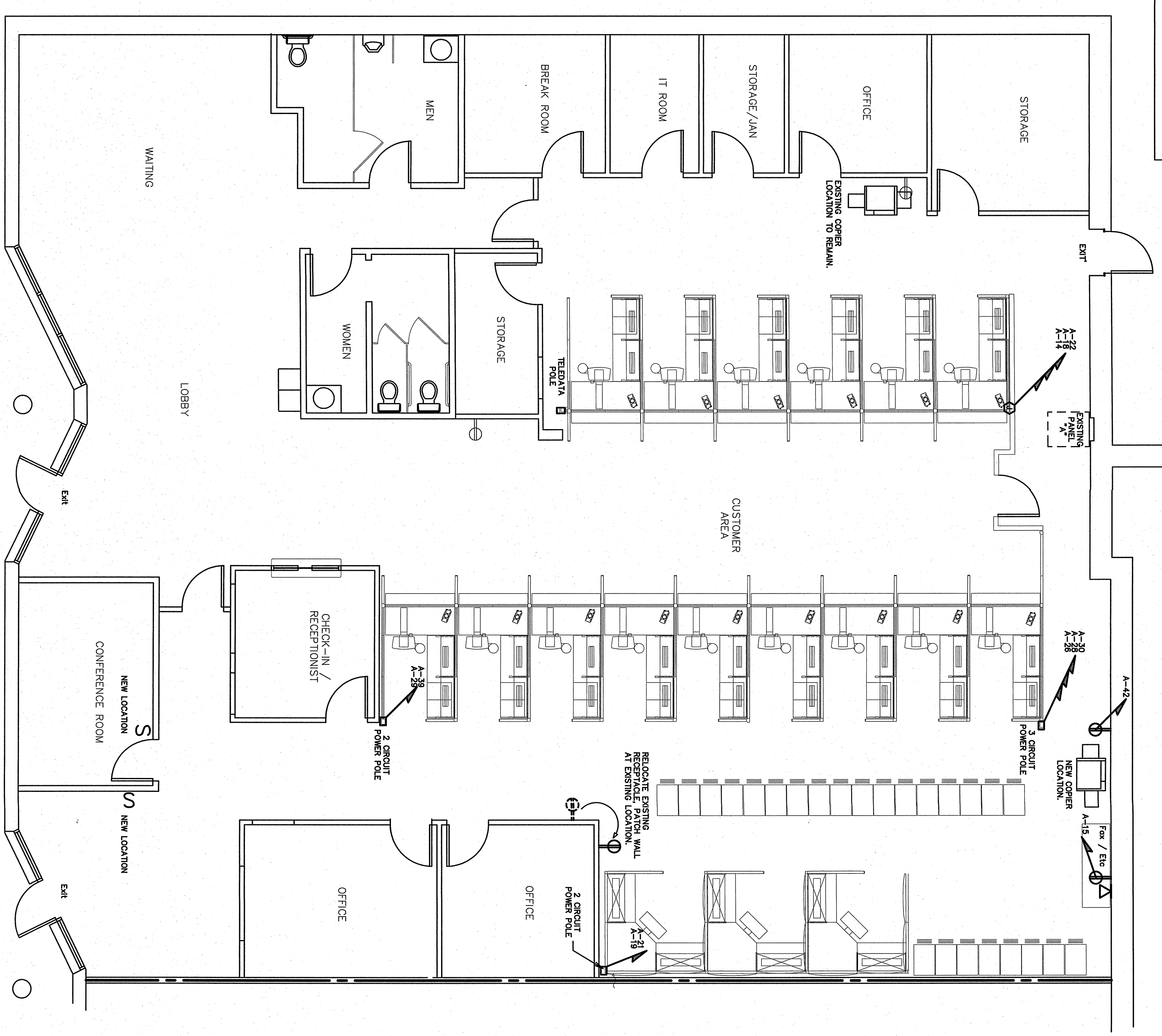


NC DWM IRP - E2

WALL LEGEND

	EXISTING WALL TO REMAIN
	EXISTING WALL TO BE REMOVED

2 EXISTING/DEMO PLAN
 SCALE 3/16"=1'-0"

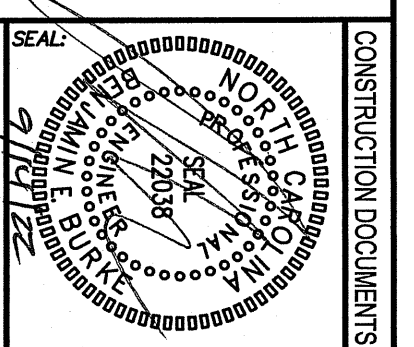


NC DWM IRP - E2

WALL LEGEND

	NEW WALL/EXISTING WALL TO REMAIN
	1-HOUR FIRE BARRIER

1 WORKSTATION UPFIT PLAN
 SCALE 3/16"=1'-0"



DESIGNED BY:
NCDOT FACILITIES DESIGN UNIT
 ARCHITECT & ENGINEERS
 1 SOUTH WASHINGTON STREET
 RALEIGH, NORTH CAROLINA 27601
 PHONE: 919/707-6540 FAX 919/715-0360

CONSULTANT:
 ENGINEER
BURKE DESIGN GROUP, PA
 3305-105 Durham Drive
 Raleigh, North Carolina 27603
 919.771.1916 fax: 919.779.0826
 email: benburke@nc.rr.com
 Corp. License # C-2652

DRAWING TITLE / DESCRIPTION:
 EXISTING/DEMO & WORKSTATION UPFIT PLAN

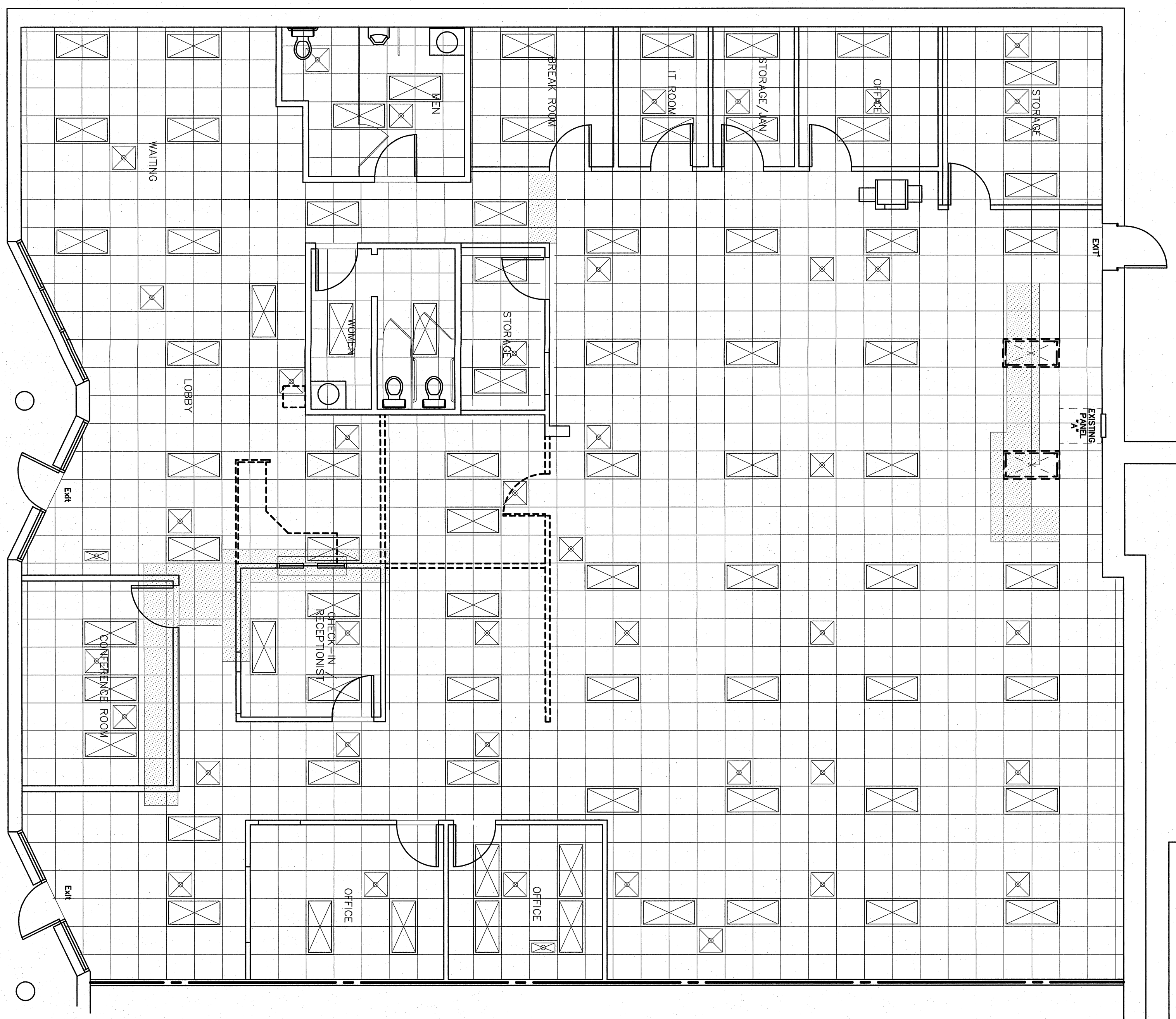
PROJECT TITLE:
 Workstation Upfit for
 NCDMV IRP Office
 1425 ROCK QUARRY ROAD
 RALEIGH, NORTH CAROLINA 27610

STATE CONSTRUCTION
 ID# 22-0000-01A
 EQUIPMENT NUMBER:
 0000-0000-0000
 RETVISIONS
 NO. DATE

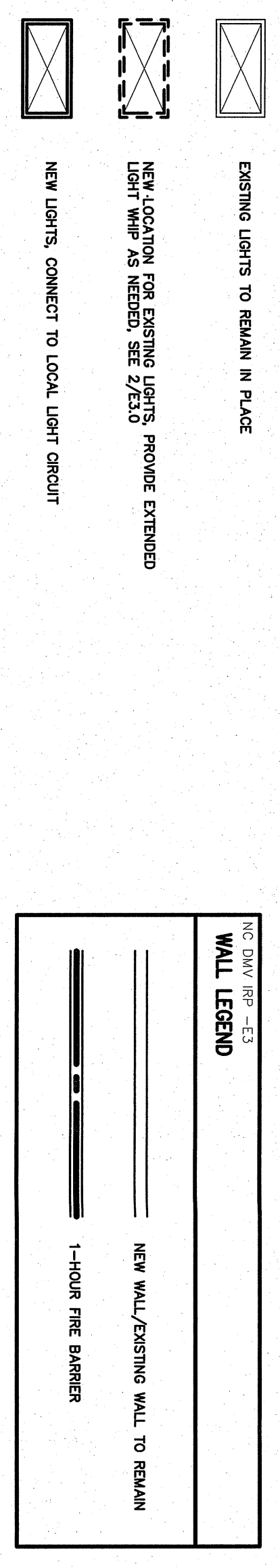
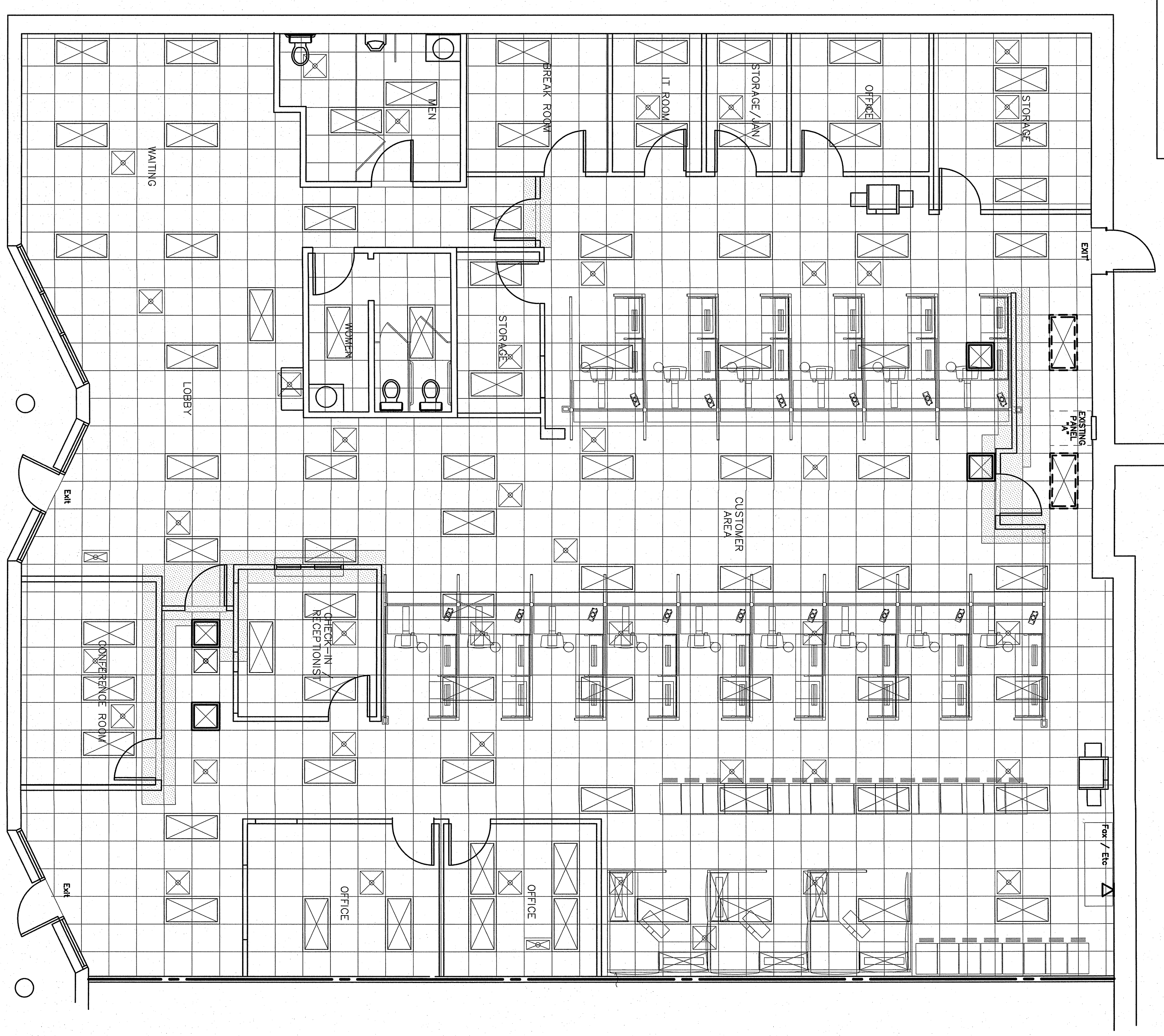
DATE ISSUED: 08/20/22
 DRAWN BY: CLS
 CHECKED BY: BEB
 SHEET NO.



NOTE:
 THE INFORMATION SHOWN ON THIS DRAWING IS FROM A FIELD INVESTIGATION. ALL RELEVANT INFORMATION
 THE SUBMISSION OF A BID INDICATES ACCEPTANCE OF EXISTING CONDITIONS. MAINTAIN ALL EXISTING CIRCUITS
 BEING USED. NOTIFY THE ENGINEER OF ANY DISCREPANCIES NOTED.



2 EXISTING/DEMO LIGHTING PLAN
 SCALE 3/16"=1'-0"



1 WORKSTATION UPFIT LIGHTING PLAN
 SCALE 3/16"=1'-0"

13.0
 SHEET NO.

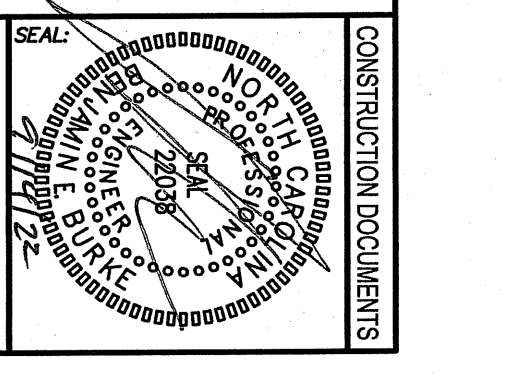
DATE ISSUED: 08/29/22
 DRAWN BY: CES
 CHECKED BY: BBP

PROJECT TITLE:
**Workstation Upfit for
 NCDMV IRP Office**
 1425 ROCK QUARRY ROAD
 RALEIGH, NORTH CAROLINA 27610

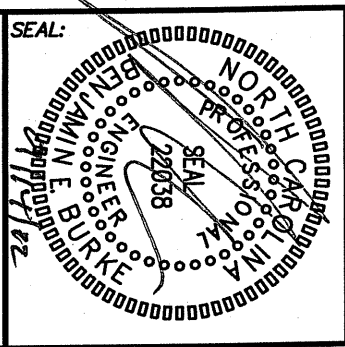
DRAWING TITLE / DESCRIPTION:
 EXISTING/DEMO & WORKSTATION UPFIT PLAN

CONSULTANT:
 ENGINEER
BLURKE DESIGN GROUP, PA
 CONSULTING ENGINEERS
 3305-109 Durham Drive
 Raleigh, North Carolina 27603
 919.771.1916 fax: 919.779.0826
 email: benburke@nc.rr.com
 Corp. License # C-2652

DESIGNED BY:
NCDOT FACILITIES DESIGN UNIT
 ARCHITECT & ENGINEERS
 1 SOUTH WILMINGTON STREET
 RALEIGH, NORTH CAROLINA 27601
 PHONE: 919/707-6240 FAX 919/715-0390



CONSTRUCTION DOCUMENTS



DESIGNED BY:
NCDOT FACILITIES DESIGN UNIT
 ARCHITECT & ENGINEERS
 1 SOUTH WILMINGTON STREET
 RALEIGH, NORTH CAROLINA 27601
 PHONE: 919/707-4340 FAX: 919/715-0380

CONSULTANT:
ENGINEER

BURKE DESIGN GROUP, PA
 CONSULTING ENGINEERS
 3305-109 Durham Drive
 Raleigh, North Carolina 27603
 919.771.1916 fax: 919.779.0826
 email: benburke@nc.rr.com
 Cop. License # C-2852

DRAWING TITLE / DESCRIPTION:
ELECTRICAL PANEL

PROJECT TITLE:
Workstation Upfit for NCDMV IRP Office
 1425 ROCK QUARRY ROAD
 RALEIGH, NORTH CAROLINA 27610

STATE CONSTRUCTION
 01# 22-0000-01A
 EQUIPMENT NUMBER:
 0000-0000-0000
 REVISIONS
 NO. DATE
 DATE ISSUED: 08/20/22
 DRAWN BY: CLS
 CHECKED BY: BEB
 SHEET NO.

EXISTING PANEL - "A"			MAKE: SQUARE D			RATING: 200A/2750V, 3 PHASE 4 WIRE			MIL. Q. MAIN CIRCUIT BREAKER		
			TYPE: 500 LOAD CENTER			MOUNTING: FLUSH			EQUIPMENT GROUND BUS: CHES CINO		
			MINIMUM A.C. VOLTAGE:			SERVICE ENTRY RATED: CHES CINO					
LOAD	CKT NO	WATS PER PHASE	NEUTRAL			WATS PER PHASE			LOAD		
LIGHTS BACK OFFICE	20A		A	B	C	A	B	C	20A	LIGHTS BACK AREA	
OFFICE REC		42								LIGHTS BACK AREA	
OFFICE REC, IS REC		40								LIGHTS BACK AREA	
OFFICE REC		38								LIGHTS BACK AREA	
OFFICE REC, IS REC		36								LIGHTS BACK AREA	
OFFICE REC		34								LIGHTS BACK AREA	
OFFICE REC, IS REC		32								LIGHTS BACK AREA	
OFFICE REC		30								POWER POLLS	
SPARE		28								LIGHTS STORAGE ROOM	
LIGHTS KITCHEN		26								POWER POLLS	
POWER POLLS		24								OFFICE LIGHTS	
POWER POLLS		22								POWER POLLS	
POWER POLLS		20								POWER POLLS	
LIGHTS BATH ROOM & HALL	20A	18								POWER POLLS	
LIGHTS BACK OFFICE		16								POWER POLLS	
POWER POLLS		14								POWER POLLS	
RECEPT UNDER PANEL		12								POWER POLLS	
HEAT & AC	60A	10								HEAT & AC	
UNIT 1		8								UNIT 2	
UNIT 2		6									
POWER POLLS	20A	4								20A	
KIT MICROSWAIVE RECEPT		2								SPARE	
		1								20A	
		0								SPARE	
		0								20A	
NOTES			200A BUS			SUB-TOTALS A			TOTAL CONNECTED LOAD		
FLIP PANEL COVER AND RE-NUMBER PANEL INCK.			200A FEED			SUB-TOTALS B			TOTAL		
			AMPS/PHASE			AMPS/PHASE					
			SIZE			SIZE					

REVERSE PANEL - "A"			MAKE: SQUARE D			RATING: 200A/2750V, 3 PHASE 4 WIRE			MIL. Q. MAIN CIRCUIT BREAKER		
			TYPE: 500 LOAD CENTER			MOUNTING: FLUSH			EQUIPMENT GROUND BUS: CHES CINO		
			MINIMUM A.C. VOLTAGE:			SERVICE ENTRY RATED: CHES CINO					
LOAD	CKT NO	WATS PER PHASE	NEUTRAL			WATS PER PHASE			LOAD		
LIGHTS BACK OFFICE	20A		A	B	C	A	B	C	20A	LIGHTS BACK AREA	
OFFICE REC		3								LIGHTS BACK AREA	
OFFICE REC, IS REC		5								LIGHTS BACK AREA	
OFFICE REC		7								LIGHTS BACK AREA	
OFFICE REC, IS REC		9								LIGHTS BACK AREA	
OFFICE REC		11								POWER POLLS	
OFFICE REC, IS REC		13								POWER POLLS	
OFFICE REC		15								POWER POLLS	
FAV WORKBENCH		17								OFFICE LIGHTS	
LIGHTS KITCHEN		19								POWER POLLS	
POWER POLLS		21								POWER POLLS	
POWER POLLS		23								POWER POLLS	
RECEPT UNDER PANEL	20A	25								POWER POLLS	
LIGHTS BATH ROOM & HALL		27								POWER POLLS	
LIGHTS BACK OFFICE		29								POWER POLLS	
POWER POLLS		31								HEAT & AC	
RECEPT UNDER PANEL		33								UNIT 1	
HEAT & AC	60A	35								UNIT 2	
UNIT 1		37									
UNIT 2		39									
POWER POLLS	20A	41								20A	
KIT MICROSWAIVE RECEPT		43								SPARE	
		45								20A	
		47								SPARE	
		49								20A	
NOTES			200A BUS			SUB-TOTALS A			TOTAL CONNECTED LOAD		
FLIP PANEL COVER AND RE-NUMBER PANEL INCK.			200A FEED			SUB-TOTALS B			TOTAL		
			AMPS/PHASE			AMPS/PHASE					
			SIZE			SIZE					