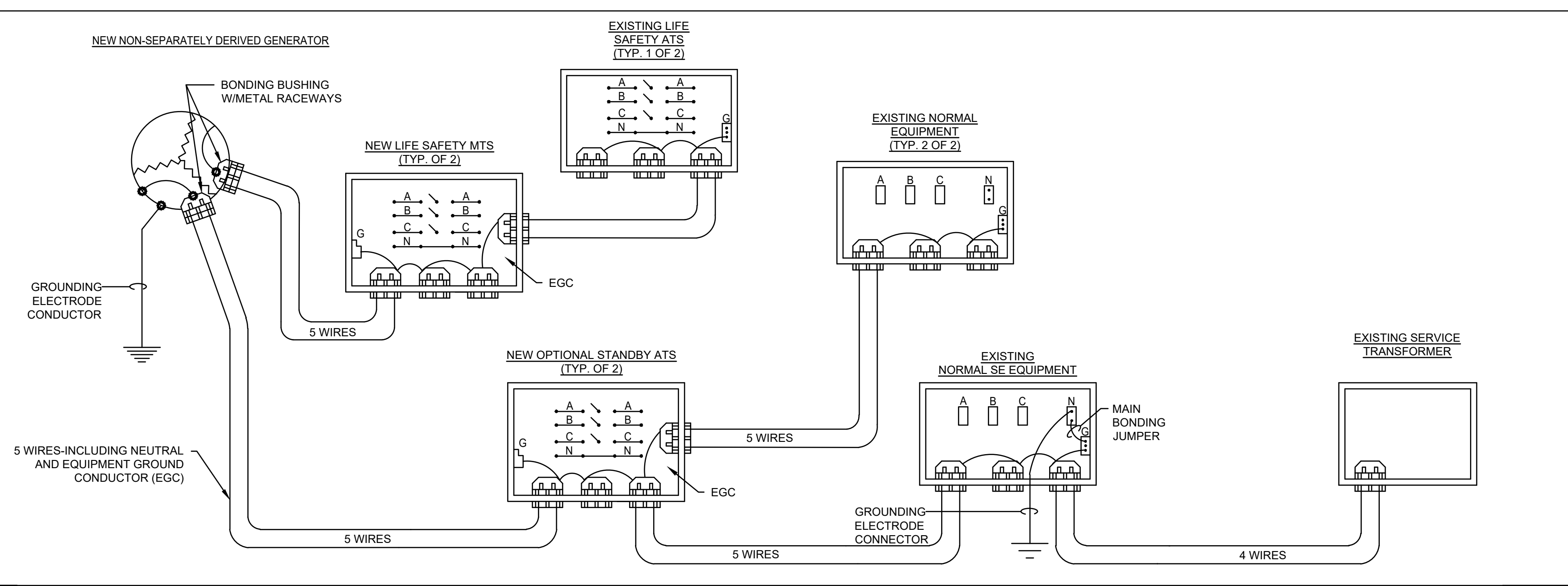


1 NEW OPTIONAL STAND-BY GENERATOR

SCALE: NTS
E113-19



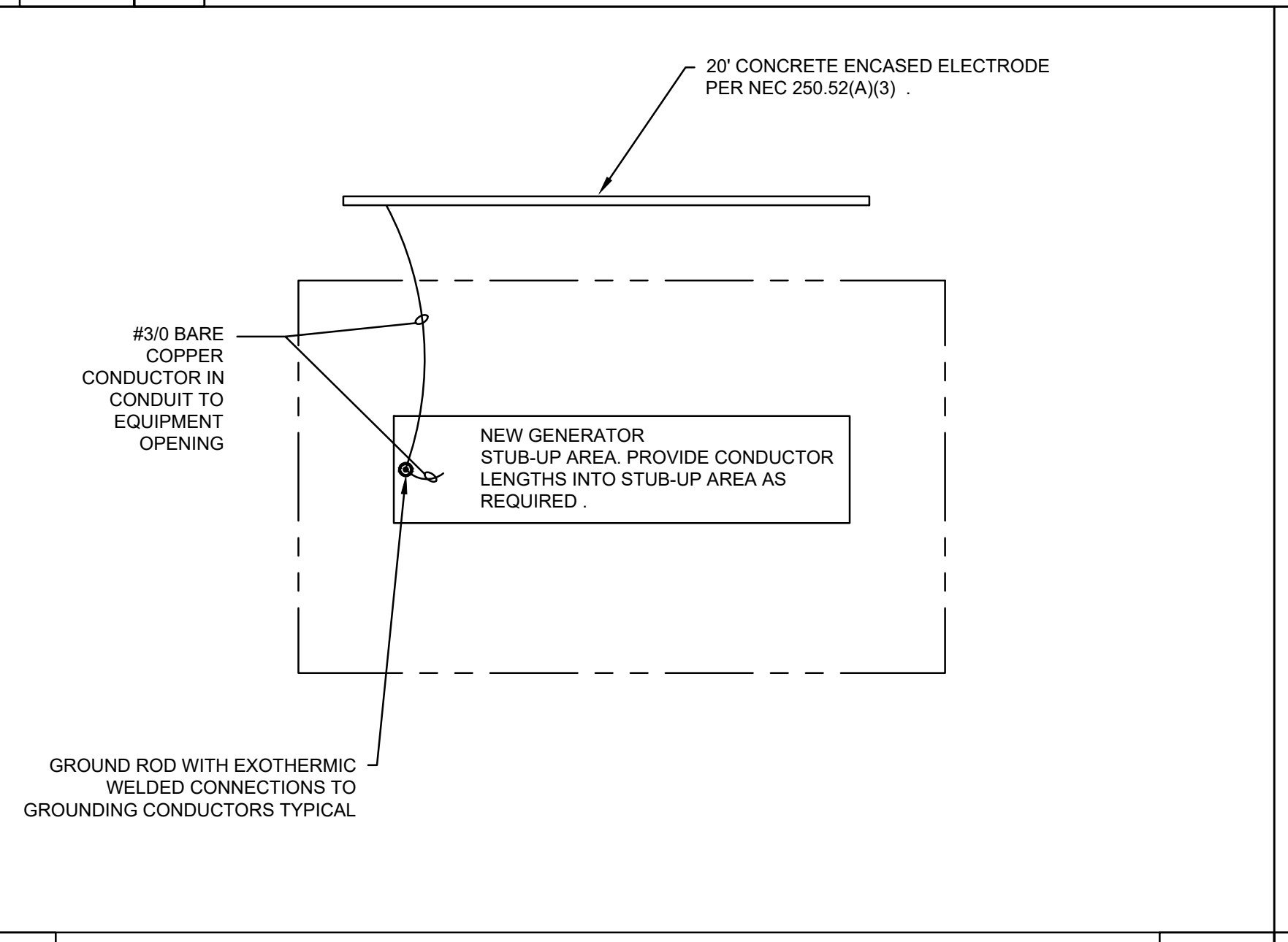
2 SYSTEM GROUNDING

SCALE: NTS
E082-08

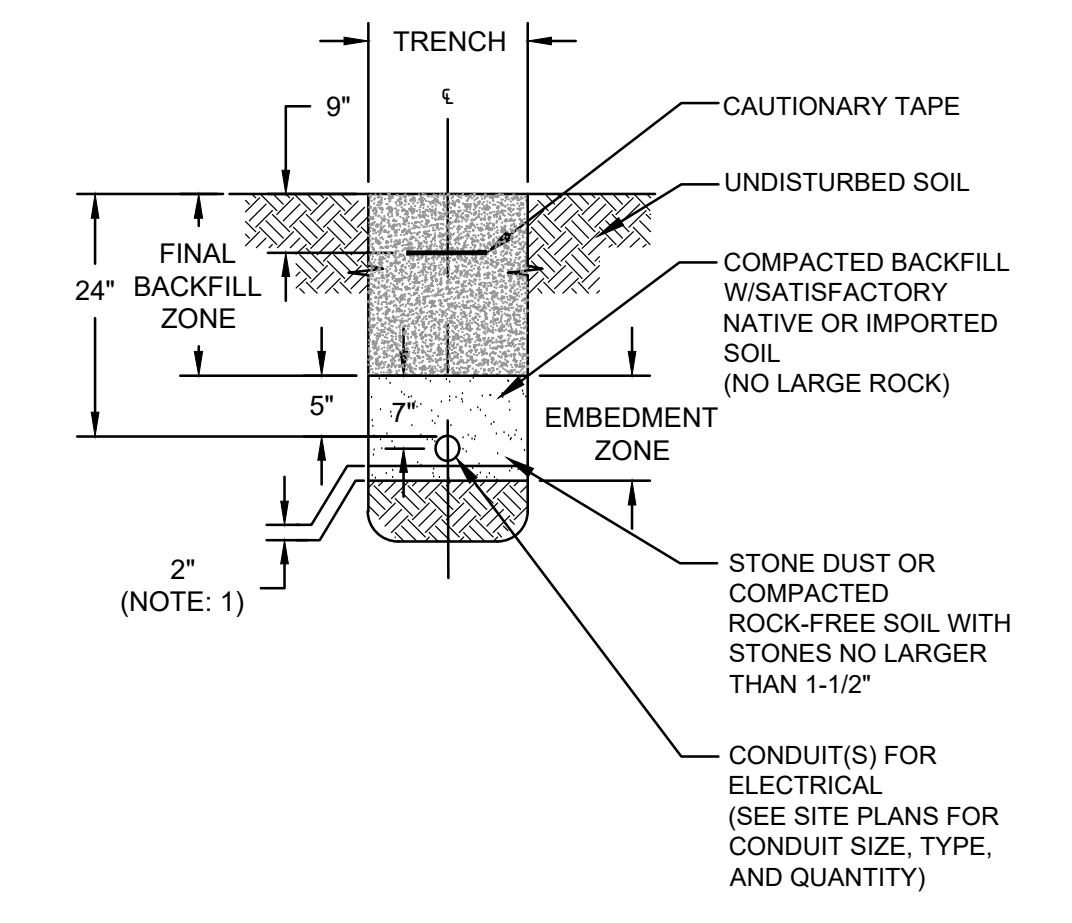


4 GENERATOR PAD GROUNDING

SCALE: NTS
E113-17

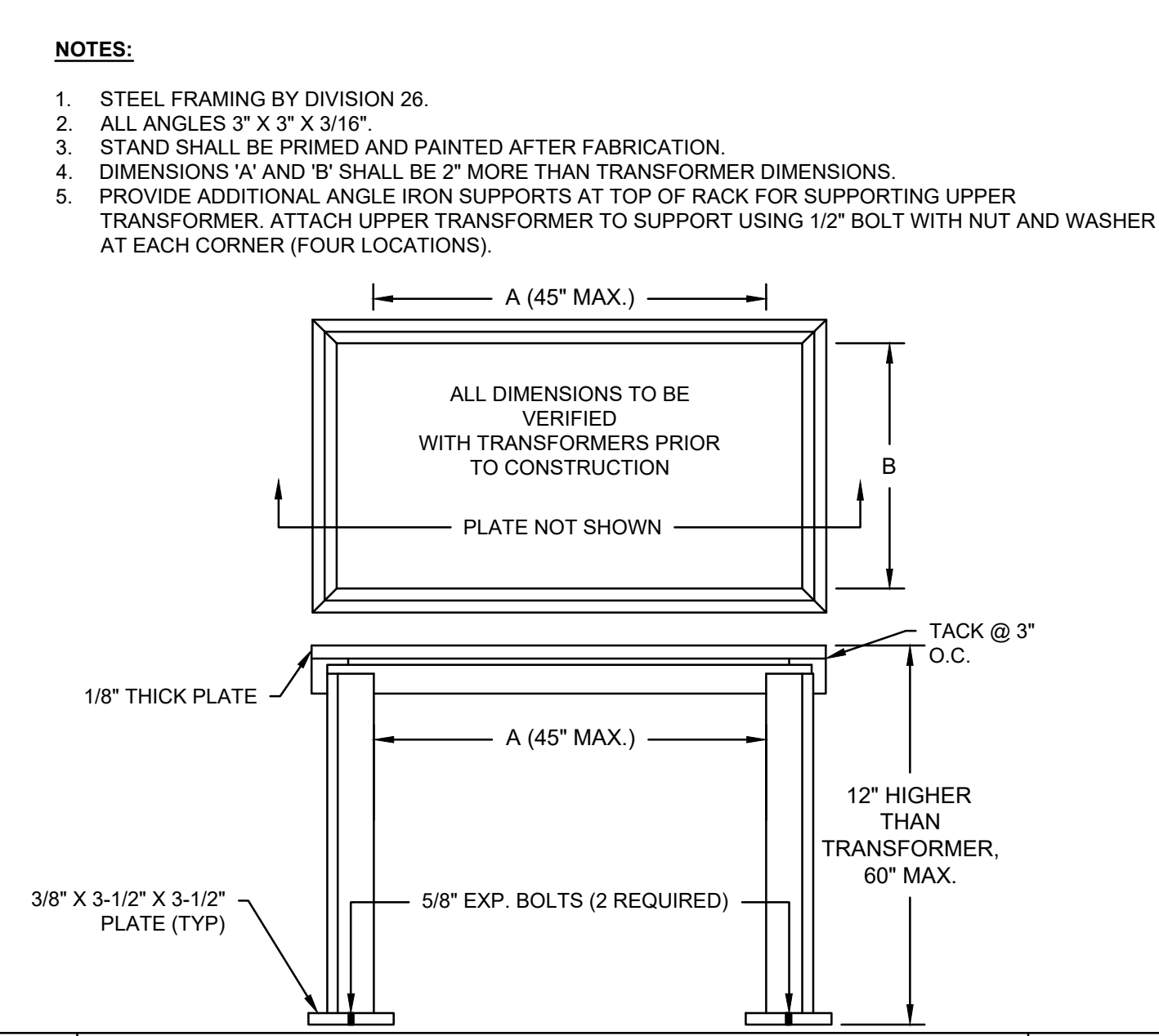


- NOTE:
1. THE BOTTOM OF THE TRENCH MUST BE FREE OF ROCK, CINDERS OR SHARP OBJECTS.
 2. SEPARATION BETWEEN ELECTRICAL CONDUITS AND COMMUNICATION CONDUITS SHALL BE 12" MINIMUM. GREATER SEPARATION SHALL BE MAINTAINED WHERE PRACTICAL. LOCAL COMPANIES MAY REQUIRE GREATER SEPARATION. THIS SHOULD BE DETERMINED IN ADVANCED BY THE SUBCONTRACTOR.
 3. THE BACKFILLED TRENCH SHALL BE FREE OF PEAT, MARL, HIGHLY PLASTIC CLAY (CH PER ASTM D-2487), OR OTHER UNSUITABLE MATERIAL SUCH AS TRASH, DEBRIS, BRUSH, FROZEN MATERIAL OR ICE.
 4. PLACE EMBEDMENT ZONE MATERIAL IN 3 OR MORE LIFTS AS SHOWN AND TAMP TO ELIMINATE VOIDS AND ASSURE FULL CONTACT WITH THE CONDUIT PERIMETER.
 5. PLACE FINAL BACKFILL ZONE MATERIAL IN 6-INCH LIFTS AND COMPACT WITH MULTIPLE PASSES OF A MACHINE TAMPER, ROLLER, OR VIBRATORY EQUIPMENT (FOR USE ON SAND AND GRAVEL ONLY) THAT IS SPECIFICALLY DESIGNED FOR SOIL COMPACTION. COMPACT UNTIL VOIDS ARE ELIMINATED AND THE COMPACTED SURFACE NO LONGER VISIBLY YIELDS BENEATH THE COMPACTION EQUIPMENT.
 6. ALL CONDUITS SHALL BE BURIED A MINIMUM OF 24" BELOW GRADE TO TOP OF CONDUIT.



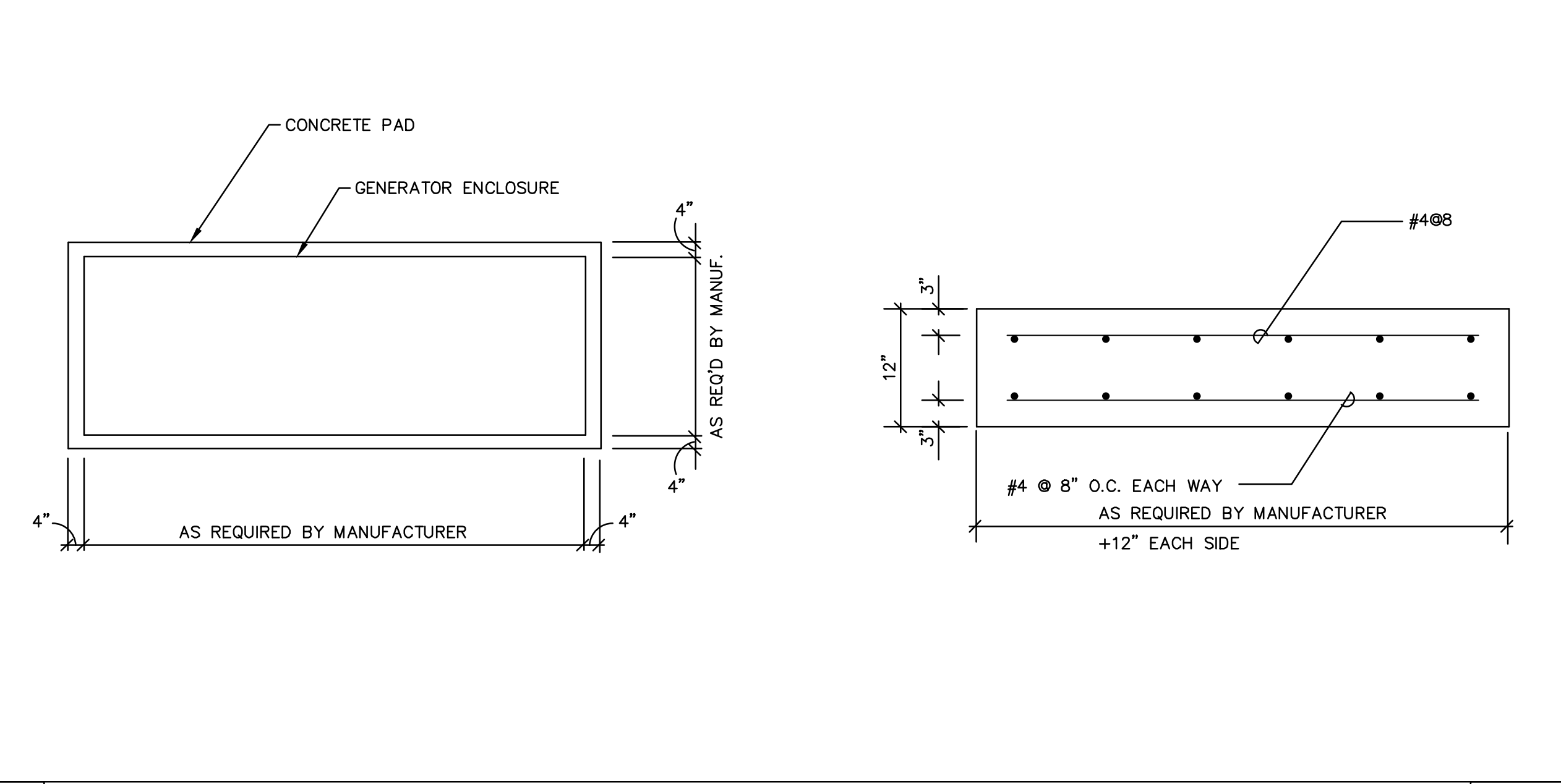
3 DIRECT BURIED CONDUIT

SCALE: NTS
E113-49



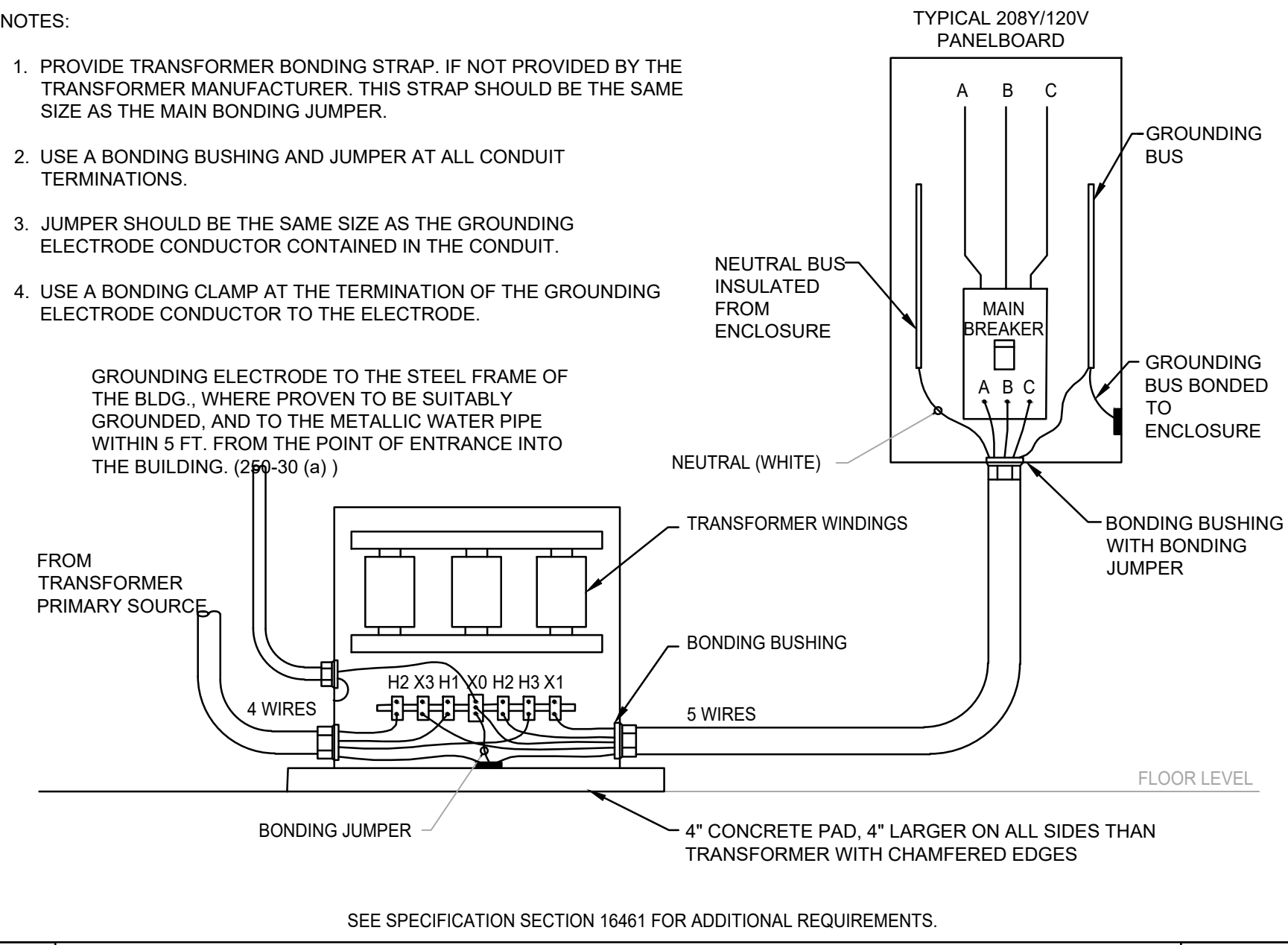
8 TRANSFORMER STACKING STAND

SCALE: NTS
E003-09



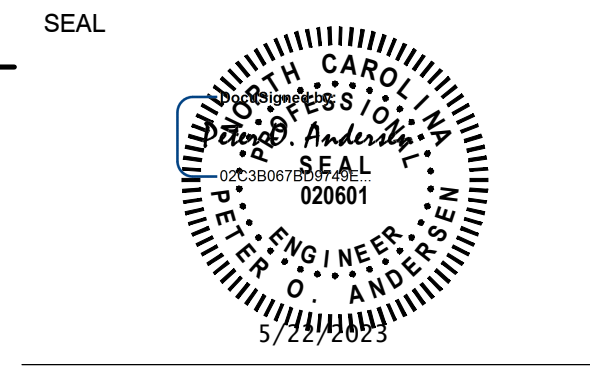
7 GENERATOR PAD DETAIL

SCALE: NTS



6 TRANSFORMER GROUNDING

SCALE: NTS
E082-05



KEY PLAN

SCALE

No.	DATE	BY	Description
1	5/22/2023	MH	ADDENDUM#1

DRAWN BY: MEH
APPROVED BY: POA
CHECKED BY: JGW
DATE: 05/01/2023
TITLE: ELECTRICAL DETAILS

PROJECT NO. 50146590