

**Wake County Public School System
LEAD MINE ELEMENTARY SCHOOL
FIRE ALARM REPLACEMENT**

ADDENDUM NO. 2

DATE: October 26, 2022

PROJECT: Wake County Public School System
Lead Mine Elementary School
Fire Alarm Replacement

OWNER: Wake County Public School System
1551 Rock Quarry Road, Building A, Raleigh, NC 27610

ENGINEER: Dewberry Engineers Inc.
2610 Wycliff Road, Suite 410, Raleigh, NC 27607

This Addendum, applicable to the work designated herein, shall be understood to be and is an Addendum to the contract documents and, as such, shall become a part of and included in the contract.

1. Please refer to Advertisement for Bids: The project bid date has been delayed one week for drawing revisions. **Bids will be opened now on Tuesday, November 7th at 2:30pm** at 1551 Rock Quarry Road, Building A, Raleigh, NC 27610

Drawings:

1. Sheets FA201, FA202, FA203, & FA204 were revised to remove full smoke detector coverage in the core area of the building. Note that, full coverage is still required in the classroom wings. Additional exterior notification devices were added. The intercom system shut-down relay was added to the plans. The Dining area notification device layout has been revised.

Specifications:

1. Advertisement for Bids – See note above.
2. Supplementary Conditions – Article 8: Revise schedule dates as follows: bid date to November 7th, 2023.
 - A. Open Bids: November 7, 2023
 - B. Notice of Intent to Award: November 8, 2023
 - C. Return of Owner Contractor Agreement by Contractor: November 22, 2023
 - D. Notice to Proceed: January 9, 2024
 - E. Substantial Completion: September 11, 2024
3. Final Completion: October 9, 2024.

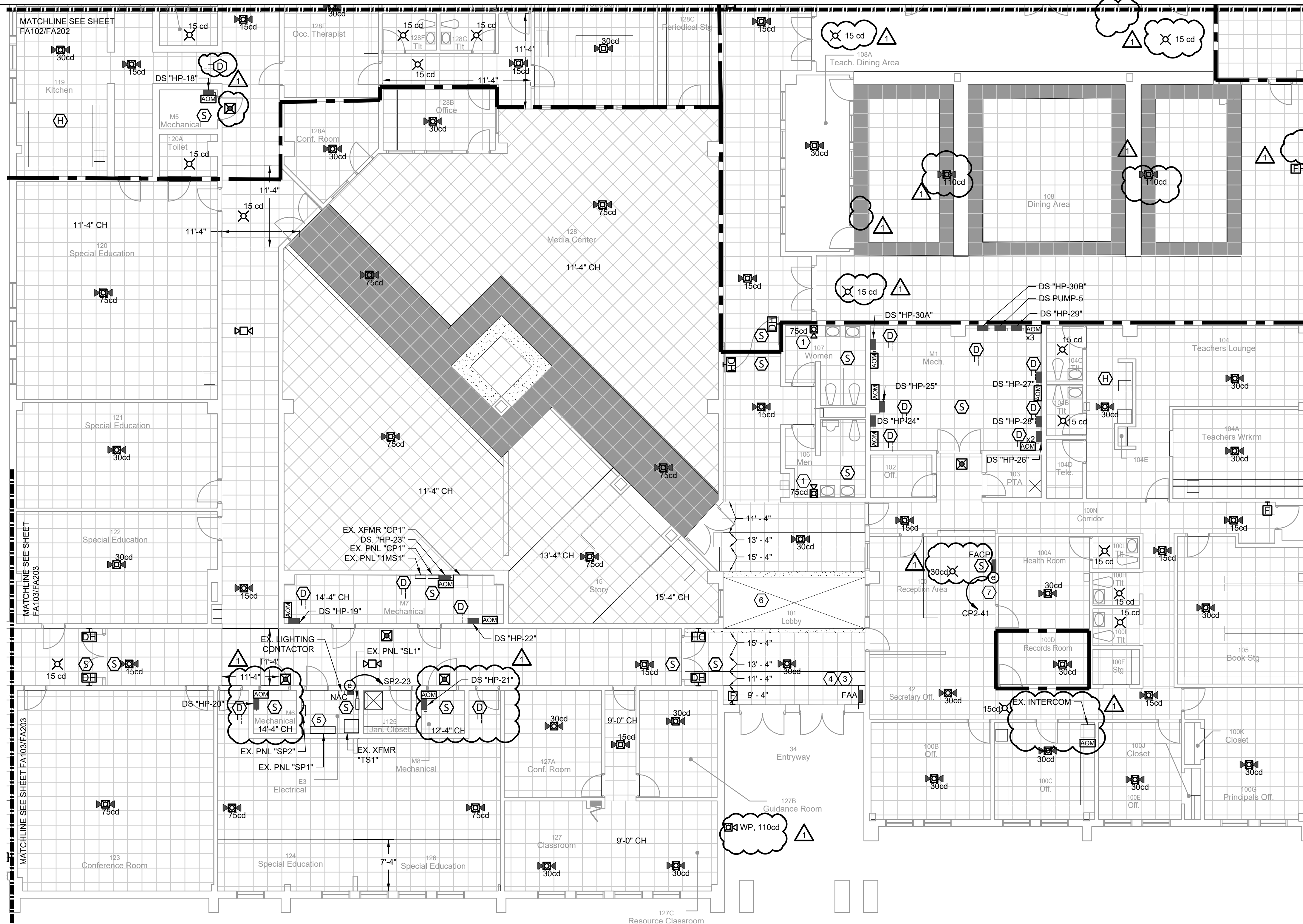
Clarifications:

1. No Clarifications

Attached Documents:

1. FA201 – Revision 1
2. FA202 – Revision 1
3. FA203 – Revision 1
4. FA204 – Revision 1

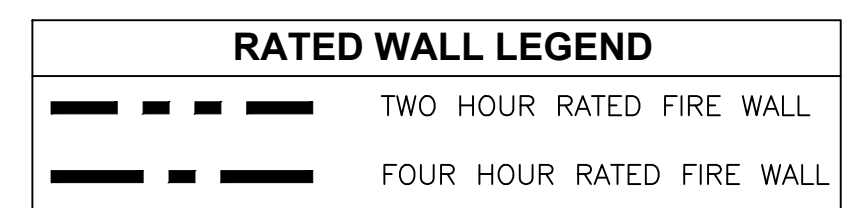
End of Addendum No. 2



- GENERAL NOTES:**
- CORE AREA HAS BEEN DESIGNED WITH DUCT MOUNTED SMOKE DETECTORS PER NC MECHANICAL CODE SECTION 606.2.1.
 - CLASSROOM WINGS HAVE BEEN DESIGNED WITHOUT DUCT MOUNTED SMOKE DETECTORS PER NC MECHANICAL CODE 606.2.1 EXCEPT FOR BOTH CLASSROOM WINGS HAVE FULL SMOKE DETECTOR COVERAGE.
 - ALL PULL STATIONS NEED TO MEET THE MOUNTING HEIGHTS AS SPECIFIED ON SHEET 501. CONTRACTOR SHALL FIELD-VERIFY ALL PULL STATION MOUNTING HEIGHTS. CONTRACTOR SHALL MAKE ANY AND ALL APPROPRIATE MOUNTING HEIGHT CHANGES.
 - ALL CLASSROOMS, CORRIDORS, AND GANG TOILETS HAVE ACT TILE CEILINGS UNLESS OTHERWISE NOTED OR INDICATED ON PLANS. MECHANICAL AND ELECTRICAL ROOMS DO NOT HAVE CEILINGS.
 - CONTRACTOR IS RESPONSIBLE FOR COORDINATING NEW DEVICES WITH EXISTING SYSTEMS, INCLUDING BUT NOT LIMITED TO, DOOR HARDWARE, CEILING AND WALL FINISHES.

- KEYED NOTES:** (#)
- CONTRACTOR SHALL FISH THROUGH EXISTING WALL AND ROUTE NEW CONDUIT ABOVE CEILING, REPAIR, PATCH, AND PAINT GYPSUM BOARD WALL FOR FIRE ALARM INSTALLATION.
 - COORDINATE FIRE ALARM DEVICE LOCATION WITH EXISTING GYMNASIUM AND HALLWAY SIGNAGE.
 - FIRE ALARM ANNUNCIATOR SHALL BE INSTALLED RECESSED IN A FURRED OUT STUD-WALL. WALL SHALL BE PARTIAL HEIGHT UP TO TOP OF WHITE CMU PORTION OF WALL, APPROXIMATELY 88" TALL. PROVIDE ALL CABLING IN WIRE MOLD ON INSIDE OF DINNING, AND PUNCH ABOVE SHEET ROCK TO LAY-IN TILE. RETURN TO EXISTING WALL SHALL BE AT AN ANGLE (I.E. NOT FLAT ON TOP). ABOVE PROVIDE WALL BASE AND PAINT WALL (FINISH/COLOR SHALL MATCH EXISTING). FINAL LOCATION TO BE DETERMINED BY OWNER PRIOR TO ROUGH-IN.
 - SPEAKER SHUNT FOR LOCAL OPERATING CONSOLE AT ANNUNCIATOR PANEL.
 - PROVIDE NEW BRANCH CIRCUIT, CIRCUIT BREAKER, AND BREAKER LOCK TO POWER NAC PROVIDE NEW BREAKER IN EXISTING 300A, 208/120V, 3PH, 4W, 10KAIC, NQOD SQUARE-D PANEL NAMED "SP2". MATCH NEW BREAKER TO EXISTING SQUARE-D TYPE QO 20A, 1P, BREAKERS IN EXISTING PANEL SP2.
 - PROVIDE NEW SMOKE DETECTOR IN CLERESTORY. MOUNT SMOKE DETECTOR ON GYPSUM CEILING. TURN OUT AND UP FROM ABOVE ACT TILE CEILING TO DEVICE LOCATION. SURFACE MOUNTED CONDUIT IS ALLOWED WITHIN THE CLERESTORY ONLY AND SHALL NOT BE USED EXPOSED ON GYP-BOARD CEILING AREAS VISIBLE FROM BELOW. REFER TO DETAIL BELOW FOR ADDITIONAL INFORMATION.
 - PROVIDE NEW BRANCH CIRCUIT AND BREAKER LOCK TO POWER FACP PROVIDE BREAKER LOCK IN EXISTING 150A, 208/120V, 3PH, 4W, 10KAIC, SQUARE-D NQOD SERIES PANELBOARD NAMED "CP2".

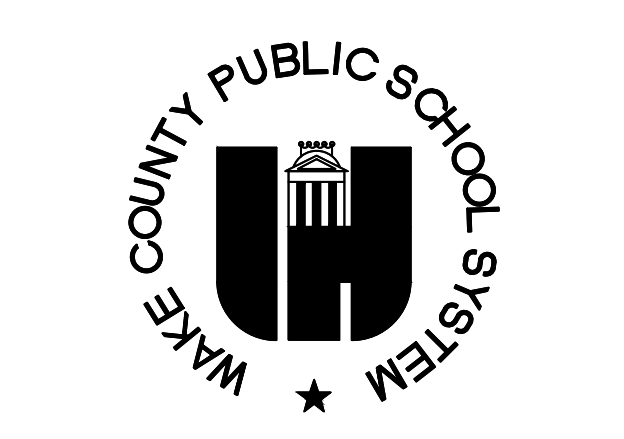
1 SOUTHERN CORE FLOOR PLAN - NEW WORK
SCALE: 1/8" = 1'-0"



FULL SMOKE DETECTOR COVERAGE REMOVED REPLACED WITH DUCT DETECTORS

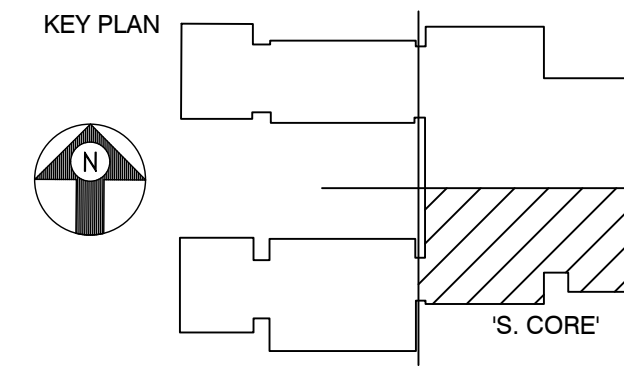
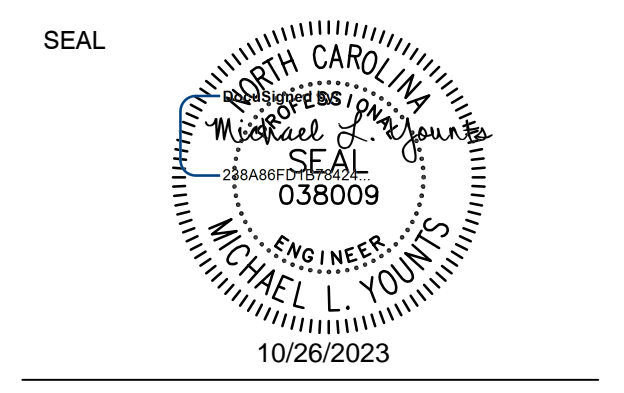


Dewberry Engineers Inc.
2010 Wycliff Road
Suite 410
RALEIGH, NC 27607-3073
PHONE: 919.981.9939
NC LICENSE No. - F-0929



1429 ROCK QUARRY ROAD, SUITE 116
RALEIGH, NORTH CAROLINA 27610

**FIRE ALARM UPGRADES
LEAD MINE
ELEMENTARY SCHOOL
WAKE COUNTY PUBLIC
SCHOOL SYSTEM
RALEIGH, NC**
WCPSS PROJECT ######



1	10.26.23	MH	ADD #2
No.	DATE	BY	Description

REVISIONS

DRAWN BY: JGW
DESIGNED BY: MEH
CHECKED BY: MLY
DATE: 10.01.2023

TITLE

**FIRE ALARM
NEW WORK PLAN
SOUTHERN CORE**

PROJECT NO. 50163000

FA201

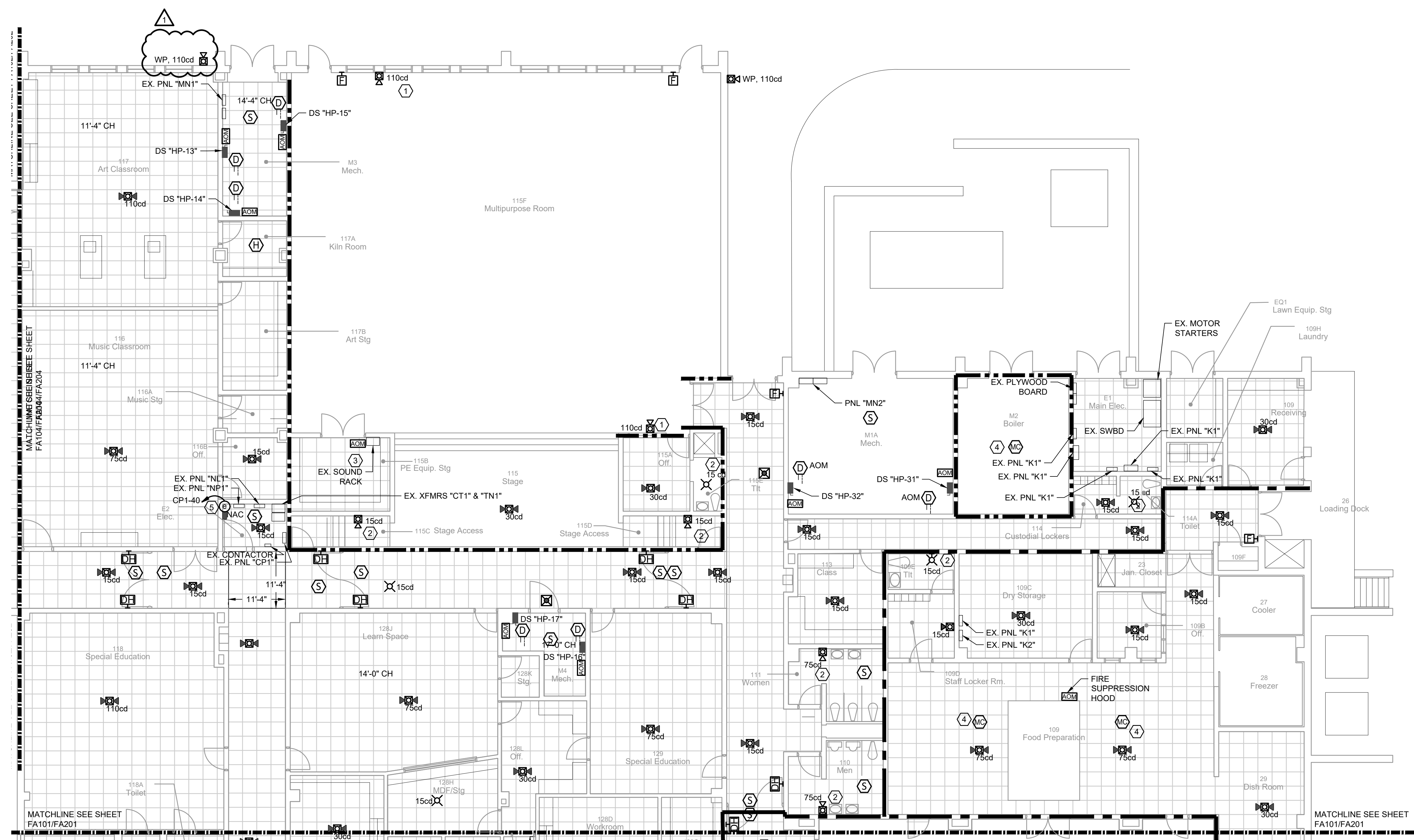
SHEET NO.

GENERAL NOTES:

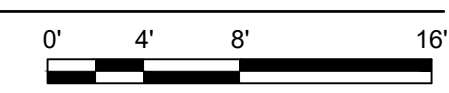
- 1. REFER TO SHEET FA101 FOR ADDITIONAL GENERAL NOTES.

KEYED NOTES: #

- 1. PROVIDE WIRE GUARDS FOR NEW FIRE ALARM DEVICES IN GYMNASIUM.
- 2. CONTRACTOR SHALL FISH THROUGH EXISTING WALL AND ROUTE NEW CONDUIT ABOVE CEILING. REPAIR, PATCH, AND PAINT GYPSUM BOARD WALL FOR FIRE ALARM INSTALLATION.
- 3. PROVIDE FIRE ALARM RELAY AT EXISTING PERFORMANCE SOUND SYSTEM RACK (FIELD COORDINATE EXACT LOCATION). RELAY SHALL INTERRUPT POWER TO THE SOUND SYSTEM DURING AN ALARM CONDITION. PROVIDE A POWER CONTROL MODULE AT SOUND RACK TO ACCOMPLISH THIS (BASIS OF DESIGN: LOWELL #RPC-20-CD).
- 4. PROGRAM MULTI-CRITERIA DETECTOR FOR HEAT AND CARBON MONOXIDE DETECTION ONLY. DO NOT PROGRAM FOR SMOKE DETECTION.
- 5. PROVIDE TWO NAC PANELS FOR THE NORTHERN CORE AND CLASSROOM WINGS. PROVIDE NEW BRANCH CIRCUIT, CIRCUIT BREAKER AND BREAKER LOCKS TO POWER NEW NAC PANELS. PROVIDE A NEW BREAKER IN EXISTING 225A, 208/120V, 3PH, 4W, 22KAIC, NQOD SERIES SQUARE-D PANEL NAMED "CP1". MATCH NEW BREAKER TO EXISTING SQUARE D TYPE QO 20A, 1P, 22KA BREAKERS.



1 NORTHERN CORE FLOOR PLAN - NEW WORK
SCALE: 1/8" = 1'-0"



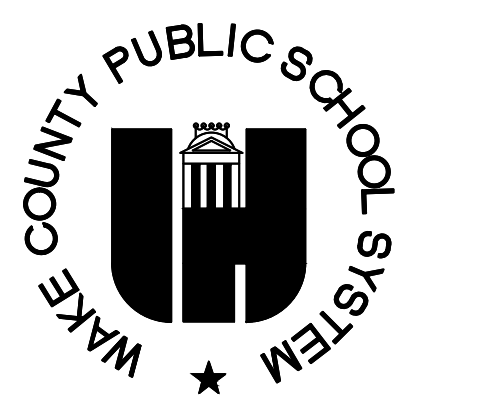
FULL SMOKE DETECTOR COVERAGE REMOVED REPLACED WITH DUCT DETECTORS

RATED WALL LEGEND

	TWO HOUR RATED FIRE WALL
	FOUR HOUR RATED FIRE WALL



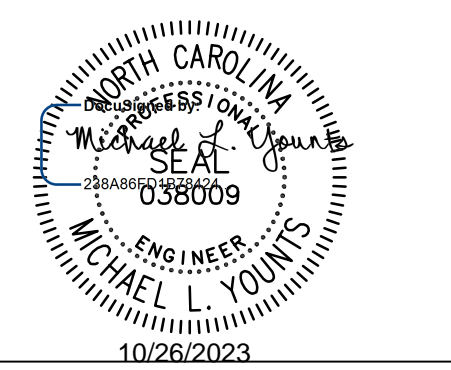
Dewberry Engineers Inc.
2610 Wycliff Road
Suite 410
RALEIGH, NC 27607-3073
PHONE: 919.881.9939
NC LICENSE No.: F-0929



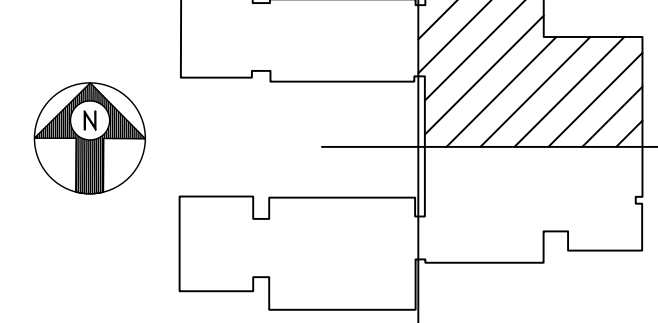
1429 ROCK QUARRY ROAD, SUITE 116
RALEIGH, NORTH CAROLINA 27610

**FIRE ALARM UPGRADES
LEAD MINE
ELEMENTARY SCHOOL
WAKE COUNTY PUBLIC
SCHOOL SYSTEM
RALEIGH, NC**
WCPSS PROJECT #####

SEAL



KEY PLAN



1	10.26.23	MH	ADD #2
No.	DATE	BY	DESCRIPTION

REVISIONS

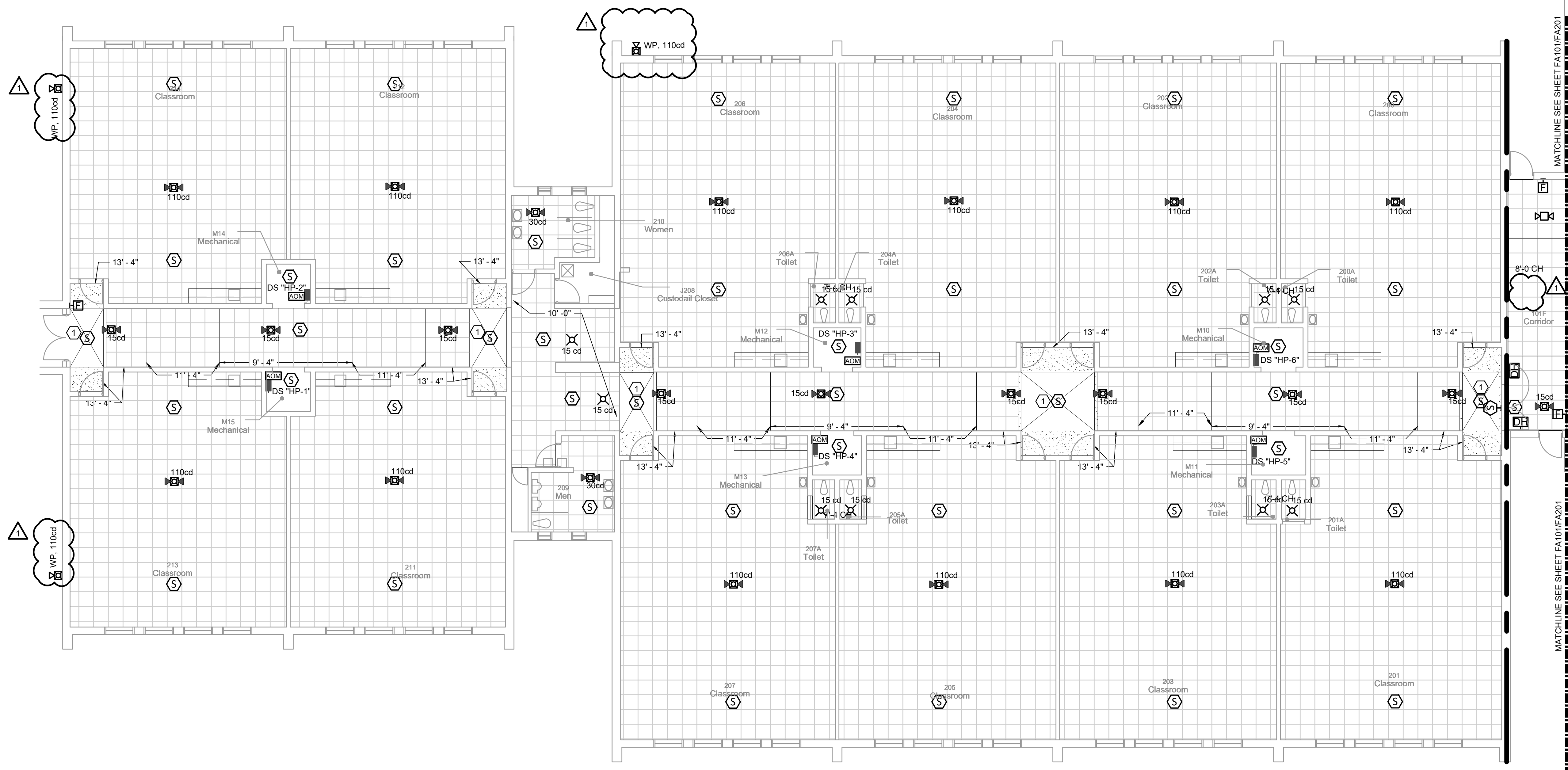
DRAWN BY	MEH
DESIGNED BY	JGW
CHECKED BY	MLY
DATE	10.01.2023

TITLE
**FIRE ALARM
NEW WORK PLAN
NORTHERN CORE**

PROJECT NO. 50163000



SHEET NO.



1 SOUTHERN CLASSROOMS FLOOR PLAN - NEW WORK
SCALE: 1/8" = 1'-0"



GENERAL NOTES:
1. SEE SHEET FA201 FOR ADDITIONAL GENERAL NOTES.

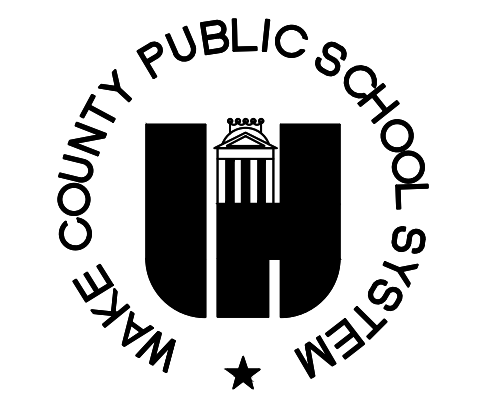
KEYED NOTES: (#)
1. PROVIDE NEW SMOKE DETECTOR IN CLERESTORY. MOUNT SMOKE DETECTOR ON GYPSUM CEILING. TURN OUT AND UP FROM ABOVE ACT TILE CEILING TO DEVICE LOCATION. SURFACE MOUNTED CONDUIT IS ALLOWED WITHIN THE CLERESTORY ONLY AND SHALL NOT BE USED EXPOSED ON GYP-BOARD CEILING AREAS VISIBLE FROM BELOW. REFER TO DETAIL BELOW FOR ADDITIONAL INFORMATION.

RATED WALL LEGEND

	TWO HOUR RATED FIRE WALL
	FOUR HOUR RATED FIRE WALL



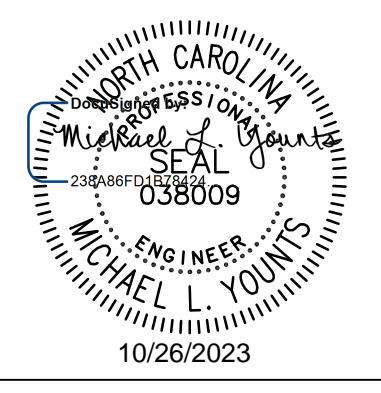
Dewberry Engineers Inc.
2010 Wycliff Road
Suite 410
RALEIGH, NC 27607-3073
PHONE: 919.981.9939
NC LICENSE No. - F-0929



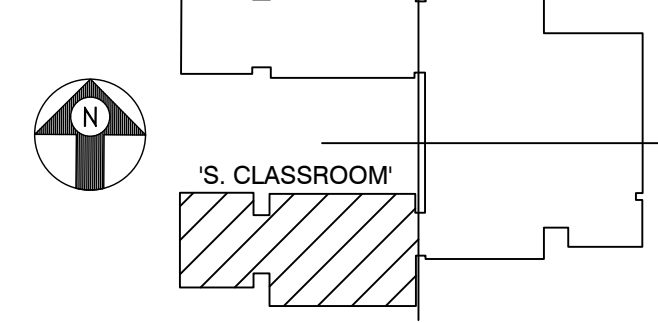
1429 ROCK QUARRY ROAD, SUITE 116
RALEIGH, NORTH CAROLINA 27610

**FIRE ALARM UPGRADES
LEAD MINE
ELEMENTARY SCHOOL
WAKE COUNTY PUBLIC
SCHOOL SYSTEM
RALEIGH, NC
WCPS PROJECT #####**

SEAL



KEY PLAN



1	10.26.23	MH	ADD #2
No.	DATE	BY	Description

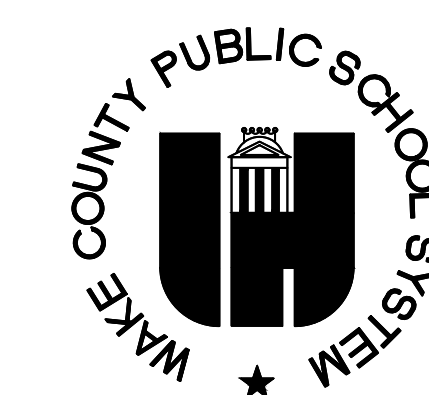
REVISIONS
DRAWN BY: JGW
DESIGNED BY: MEH
CHECKED BY: MLY
DATE: 10.01.2023

TITLE
**FIRE ALARM
NEW WORK PLAN
SOUTHERN
CLASSROOMS**

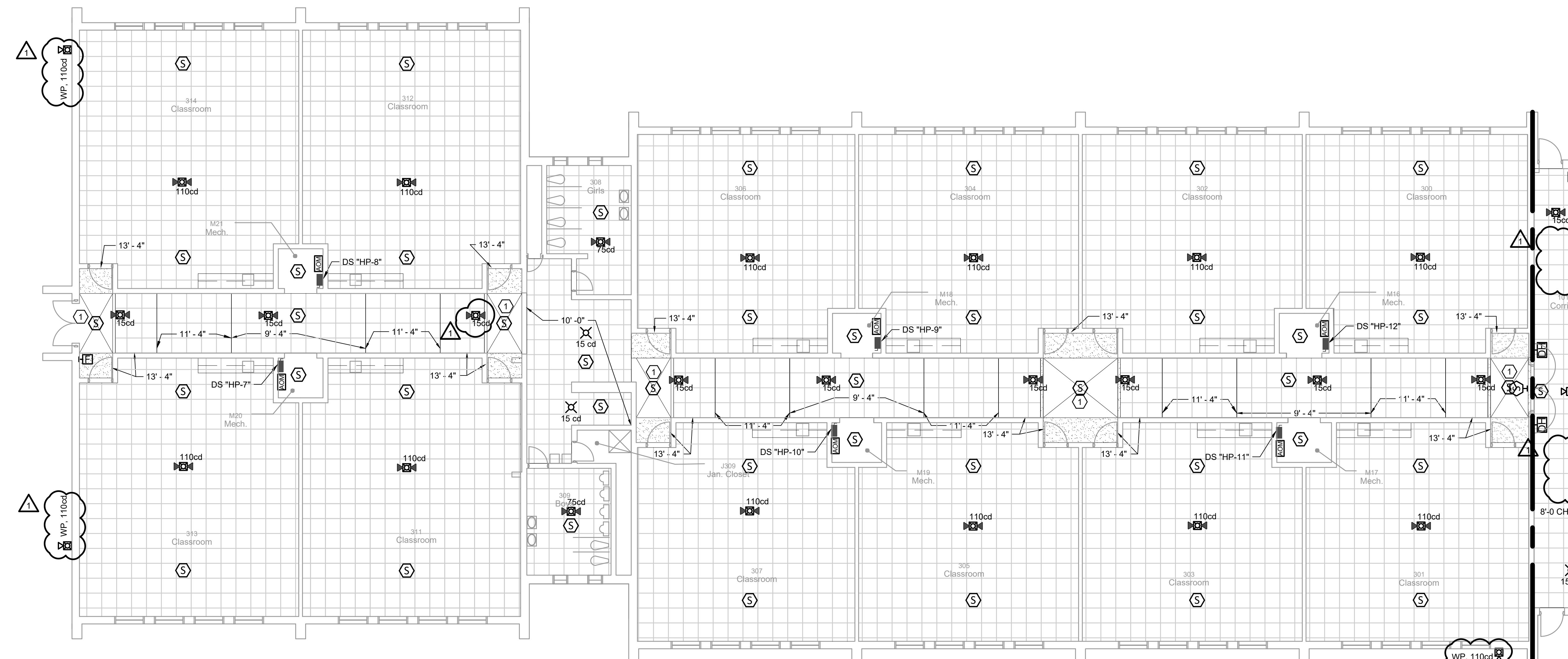
PROJECT NO. 50163000

FA203

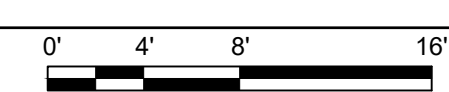
SHEET NO.



**FIRE ALARM UPGRADES
 LEAD MINE
 ELEMENTARY SCHOOL
 WAKE COUNTY PUBLIC
 SCHOOL SYSTEM
 RALEIGH, NC
 WCPSS PROJECT ######**



1 NORTHERN CLASSROOMS FLOOR PLAN - NEW WORK
 SCALE: 1/8" = 1'-0"



GENERAL NOTES:

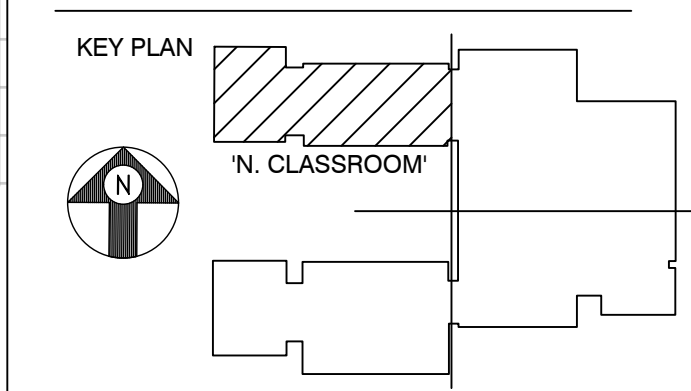
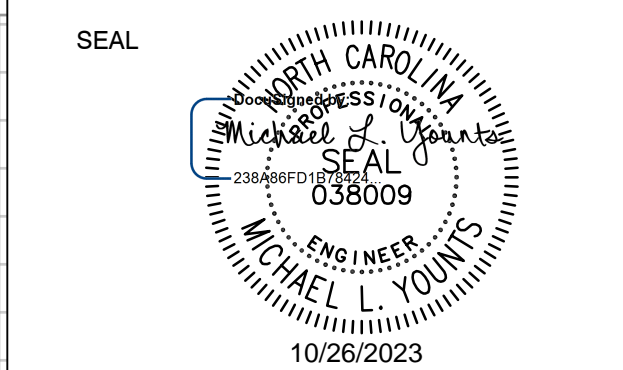
- SEE SHEET FA201 FOR ADDITIONAL GENERAL NOTES.

KEYED NOTES: (#)

- PROVIDE NEW SMOKE DETECTOR IN CLERESTORY. MOUNT SMOKE DETECTOR ON GYPSUM CEILING. TURN OUT AND UP FROM ABOVE ACT TILE CEILING TO DEVICE LOCATION. SURFACE MOUNTED CONDUIT IS ALLOWED WITHIN THE CLERESTORY ONLY AND SHALL NOT BE USED EXPOSED ON GYP-BOARD CEILING AREAS VISIBLE FROM BELOW. REFER TO DETAIL BELOW FOR ADDITIONAL INFORMATION.

RATED WALL LEGEND

	TWO HOUR RATED FIRE WALL
	FOUR HOUR RATED FIRE WALL



No.	DATE	BY	Description
1	10.26.23	MH	ADD #2

REVISIONS

DRAWN BY: JGW
 DESIGNED BY: MEH
 CHECKED BY: MLY
 DATE: 10.01.2023

TITLE
**FIRE ALARM
 NEW WORK PLAN
 NORTHERN
 CLASSROOMS**

PROJECT NO. 50163000

FA204