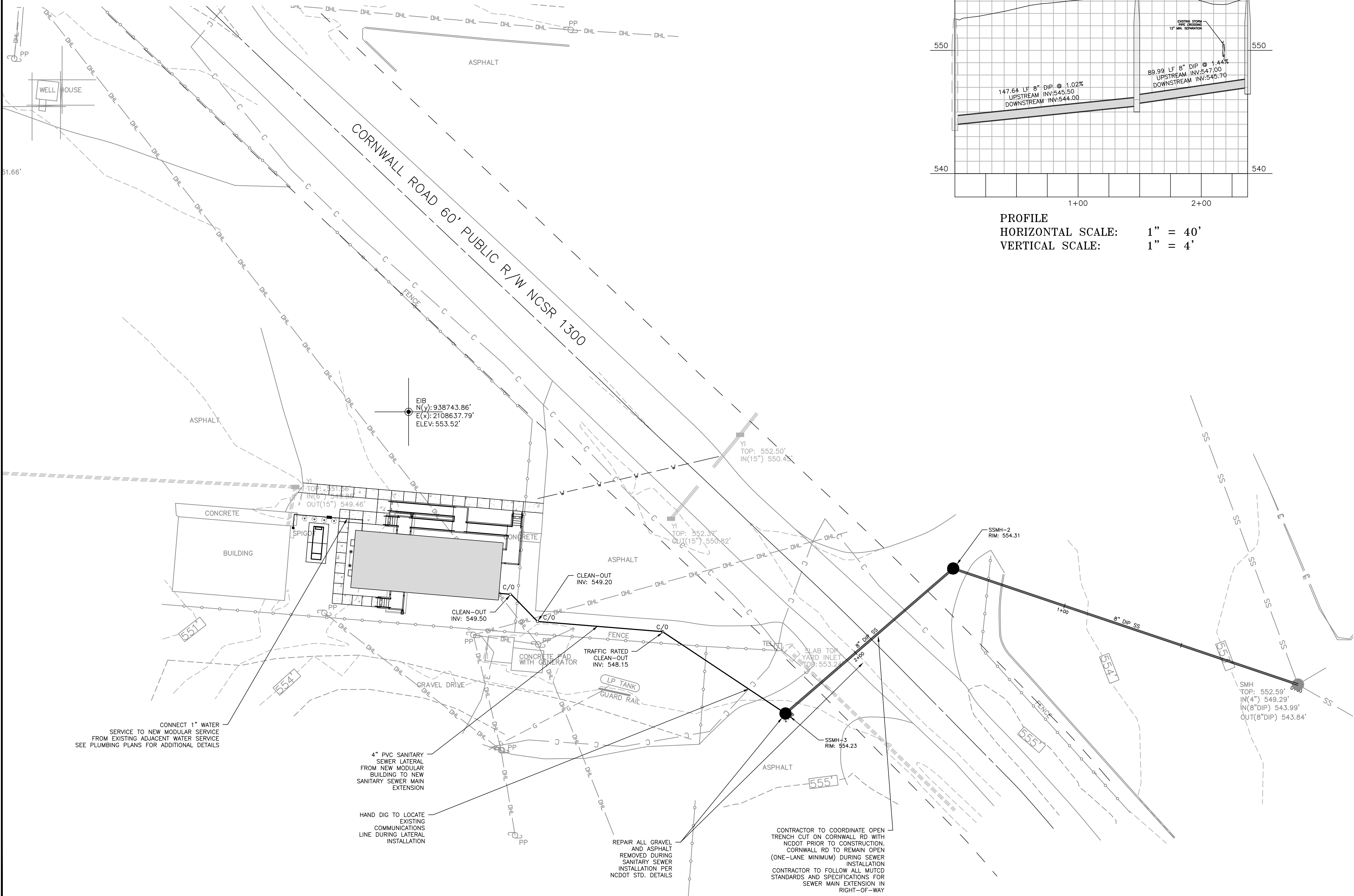
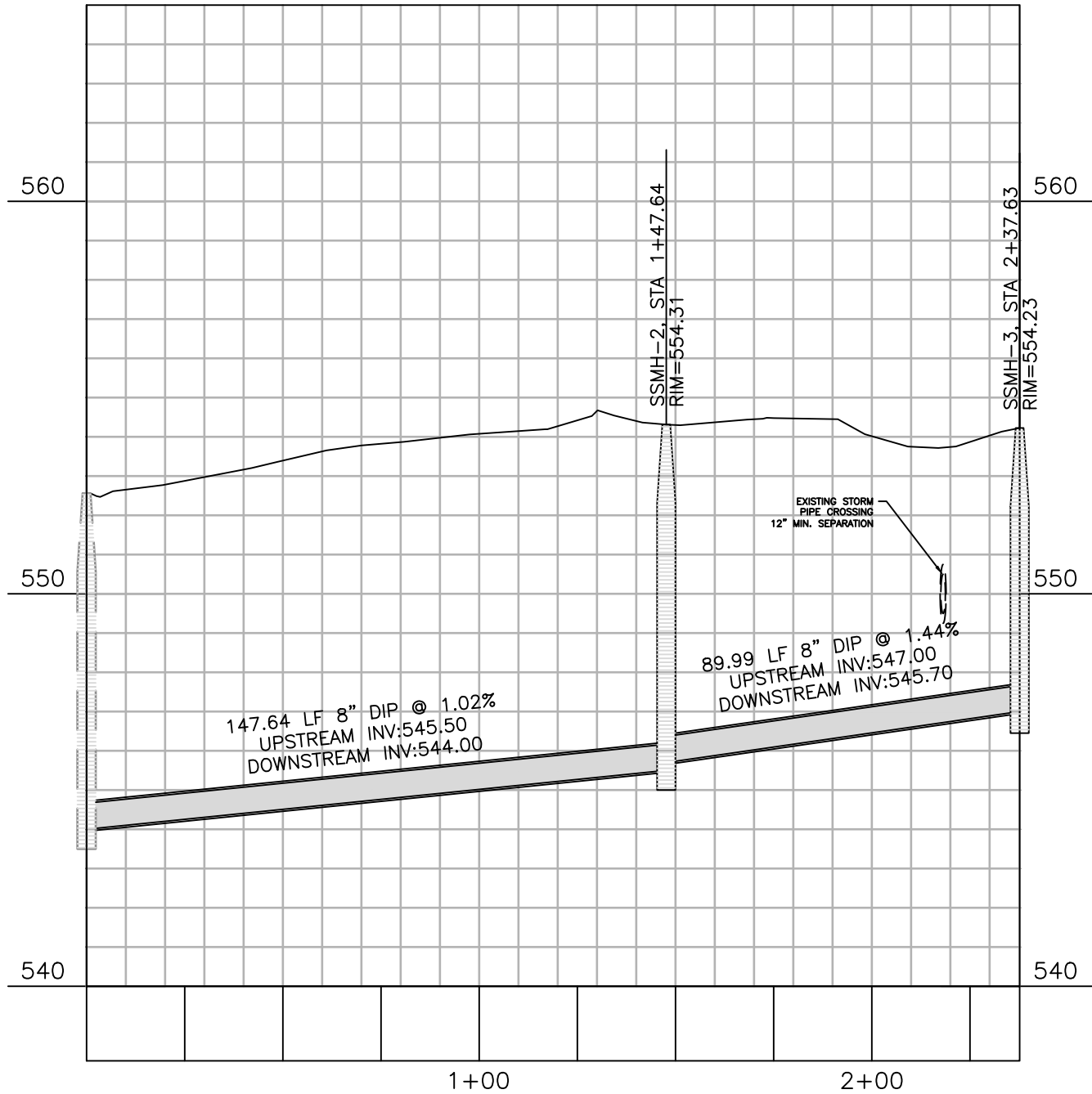


STANDARD UTILITY NOTES

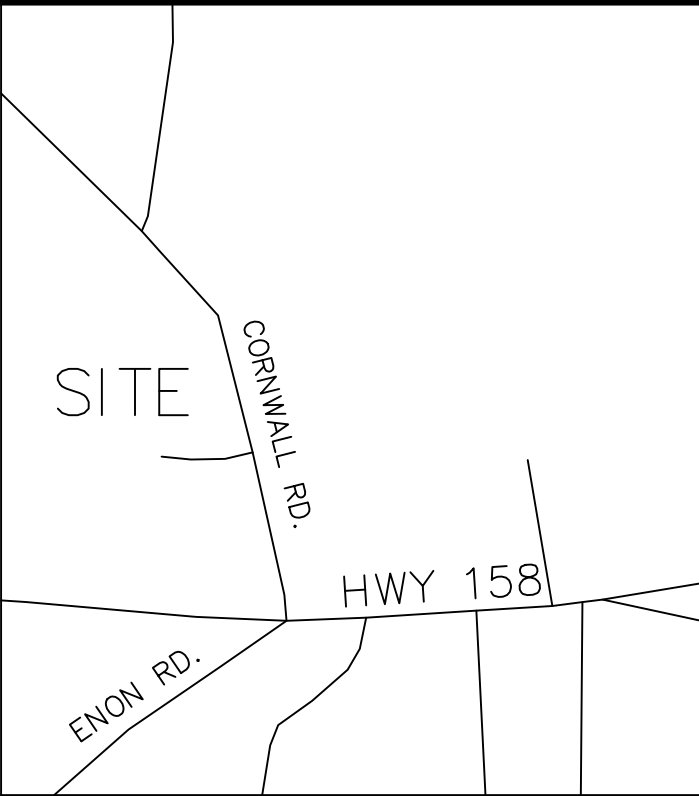
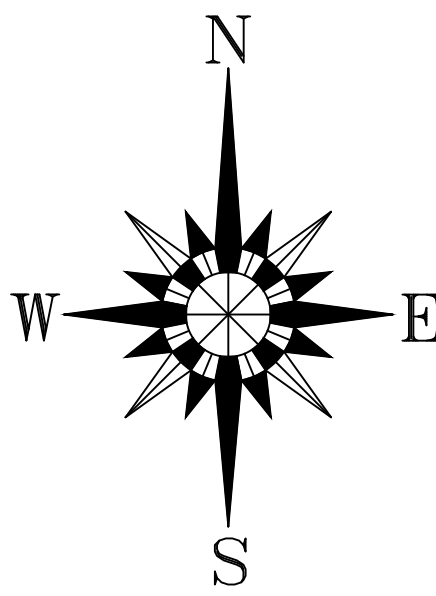
1. ALL MATERIALS & CONSTRUCTION METHODS SHALL BE IN ACCORDANCE WITH NCDOT DESIGN STANDARDS, DETAILS & SPECIFICATIONS.
2. 3.0" MINIMUM COVER IS REQUIRED ON ALL WATER MAINS AND SEWER LINES
3. INSTALL 4 " PVC SEWER SERVICES @ 1.0% MINIMUM GRADE WITH CLEANOUTS LOCATED 1' FROM ROW OR EASEMENT LINE & SPACED EVERY 75 LINEAR FEET MAXIMUM
4. ALL ENVIRONMENTAL PERMITS APPLICABLE TO THE PROJECT MUST BE OBTAINED FROM NCDOW, USACE &/OR FEMA FOR ANY RIPARIAN BUFFER, WETLAND &/OR FLOODPLAIN IMPACTS (RESPECTIVELY) PRIOR TO CONSTRUCTION.
5. MAINTAIN A MINIMUM OF 18 INCHES OF VERTICAL SEPARATION BETWEEN UTILITIES.
6. VERIFY ALL ILLUSTRATED UTILITY CROSSINGS PRIOR TO CONSTRUCTION AND NOTIFY THE ENGINEER IF CONFLICTS ARE ENCOUNTERED.
7. CONTRACTOR SHALL COORDINATE UTILITY RELOCATION OR ABANDONMENT WITH LOCAL UTILITY COMPANIES AS REQUIRED.
8. ALL METERED CONNECTIONS TO COUNTY POTABLE WATER SHALL HAVE A STATE-APPROVED BACKFLOW PREVENTION ASSEMBLY INSTALLED.
9. WATER AND SEWER SHALL BE AT LEAST 10 FEET Laterally FROM EXISTING OR PROPOSED SEWERS. WHERE LOCAL CONDITIONS PREVENT A SEPARATION OF AT LEAST 10 FEET, THE WATER MAIN MAY BE LAID CLOSER, PROVIDED THAT THE ELEVATION OF THE BOTTOM OF THE WATER MAIN IS AT LEAST 18 INCHES ABOVE THE TOP OF THE SEWER WITH A HORIZONTAL SEPARATION OF AT LEAST THREE (3) FEET.
10. CONTRACTOR TO CONTACT COUNTY TO VERIFY IF A PLUMBING PERMIT ISSUED BY THE BUILDING INSPECTION DIVISION IS REQUIRED FOR ALL PLUMBING SYSTEMS, INCLUDING WATER AND SEWER CONNECTIONS.
11. IT IS THE RESPONSIBILITY OF THE CONTRACTOR OR HIS REPRESENTATIVE(S) TO LOCATE AND IDENTIFY ALL EXISTING AND PROPOSED UTILITIES AND TO CLEARLY IDENTIFY THEM ON THE APPROVED PLANS.



SEWER EXTENSION



PROFILE
HORIZONTAL SCALE: 1" = 40'
VERTICAL SCALE: 1" = 4'



SURVEY DISCLAIMER

SURVEY INFORMATION PREPARED BY L. JORDAN PARKER (PLS L-4665) ON OCTOBER 7, 2022. CAWTHORNE, MOSS, & PANCIERA, PC, 333 S. WHITE STREET, WAKE FOREST, NC 27588

WATER DISTRIBUTION NOTES

1. CONTRACTOR TO LOCATE TIE-INS TO ALL BUILDING LOCATIONS BASED ON PLUMBING PLANS.
2. THERE SHALL BE NO TAPS, PIPING BRANCHES, UNAPPROVED BYPASS PIPING, HYDRANTS, FIRE DEPARTMENT CONNECTIONS, OR OTHER WATER USING APPURTENANCES CONNECTED TO THE SUPPLY LINE BETWEEN ANY WATER METER AND ITS STATE REQUIRED BACKFLOW PREVENTER. STATE CONSTRUCTION OFFICE IS AHJ FOR THIS PROJECT.

SANITARY SEWER NOTES

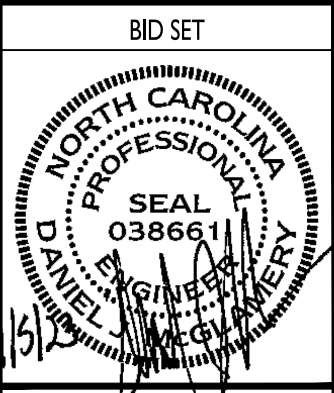
1. CONTRACTOR TO LOCATE TIE-INS TO ALL BUILDING LOCATIONS BASED ON PLUMBING PLANS. CONTRACTOR IS RESPONSIBLE FOR COORDINATING AND PAYING FOR INSTALLATION INCLUDING TAP FEES. (INCLUDING CAPITAL FACILITY FEES)

UNDERGROUND NOTES

1. CONTRACTOR IS FULLY RESPONSIBLE FOR CONTACTING APPROPRIATE PARTIES AND ASSURING THAT EXISTING UTILITIES ARE LOCATED PRIOR TO CONSTRUCTION.
2. CONTRACTOR IS RESPONSIBLE FOR PLACING BARRICADES, USING FLAG MEN, ETC. AS NECESSARY TO ENSURE THE SAFETY OF THE PUBLIC.
3. ALL PAVEMENT CUTS, CONCRETE OR ASPHALT, ARE TO BE REPLACED ACCORDING TO STANDARDS OF THE NCDOT.
4. SHORING WILL BE ACCORDING TO OSHA TRENCHING STANDARDS PART 1926, SUBPART P, OR AS AMENDED.
5. ALL CONSTRUCTION MUST CONFORM TO THE UNDERGROUND UTILITY PROTECTION ACT. BEFORE YOU DIG CALL THE CONTACT ONE-CALL CENTER AT 1-800-632-4949.

TRAFFIC CONTROL NOTES

1. ALL WORK IN RIGHT-OF-WAY FOR SANITARY SEWER SERVICE SHALL BE IN ACCORDANCE WITH NCDOT AND MUTCD STANDARDS AND SPECIFICATIONS.



DRYE-MCGLAMERY
ENGINEERING, PLLC
NC FIRM LICENSE #P-1305
PO BOX 19558
RALEIGH, NORTH CAROLINA 27619
PHONE: 704/960-0160



UTILITY PLAN

Modular Office Relocation for
NCDOT Highway Division 5
Bridge Maintenance Office
5650 CORNWALL ROAD
OXFORD, NORTH CAROLINA 27565

STATE CONSTRUCTION
ID.# 22-24690-01A

EQUIPMENT NUMBER:
1320-0008-3222

REVISIONS

NO. DATE

DATE ISSUED: 9/5/2023
DRAWN BY: DJM
CHECKED BY: HWD

SHEET NO.

C-5.0

