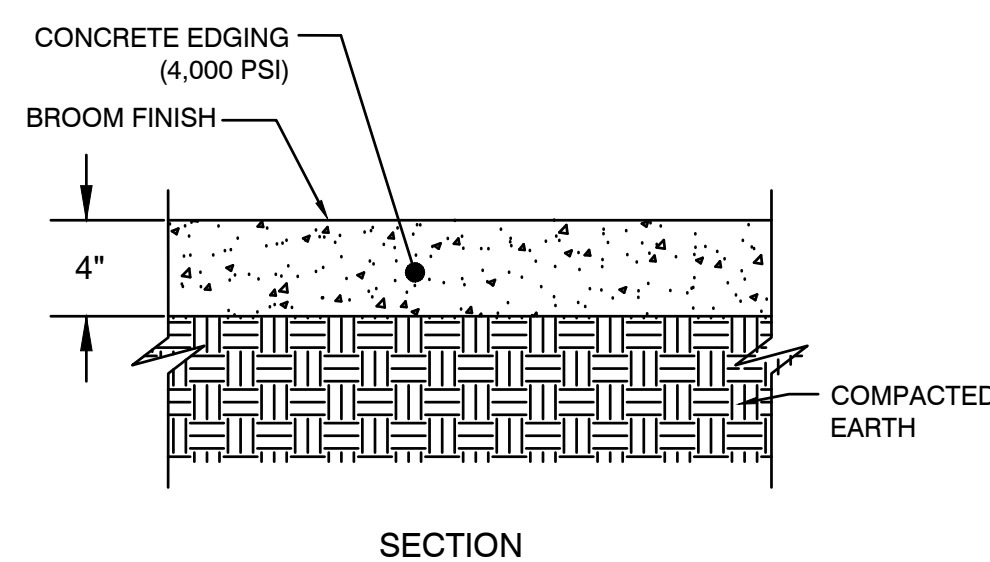
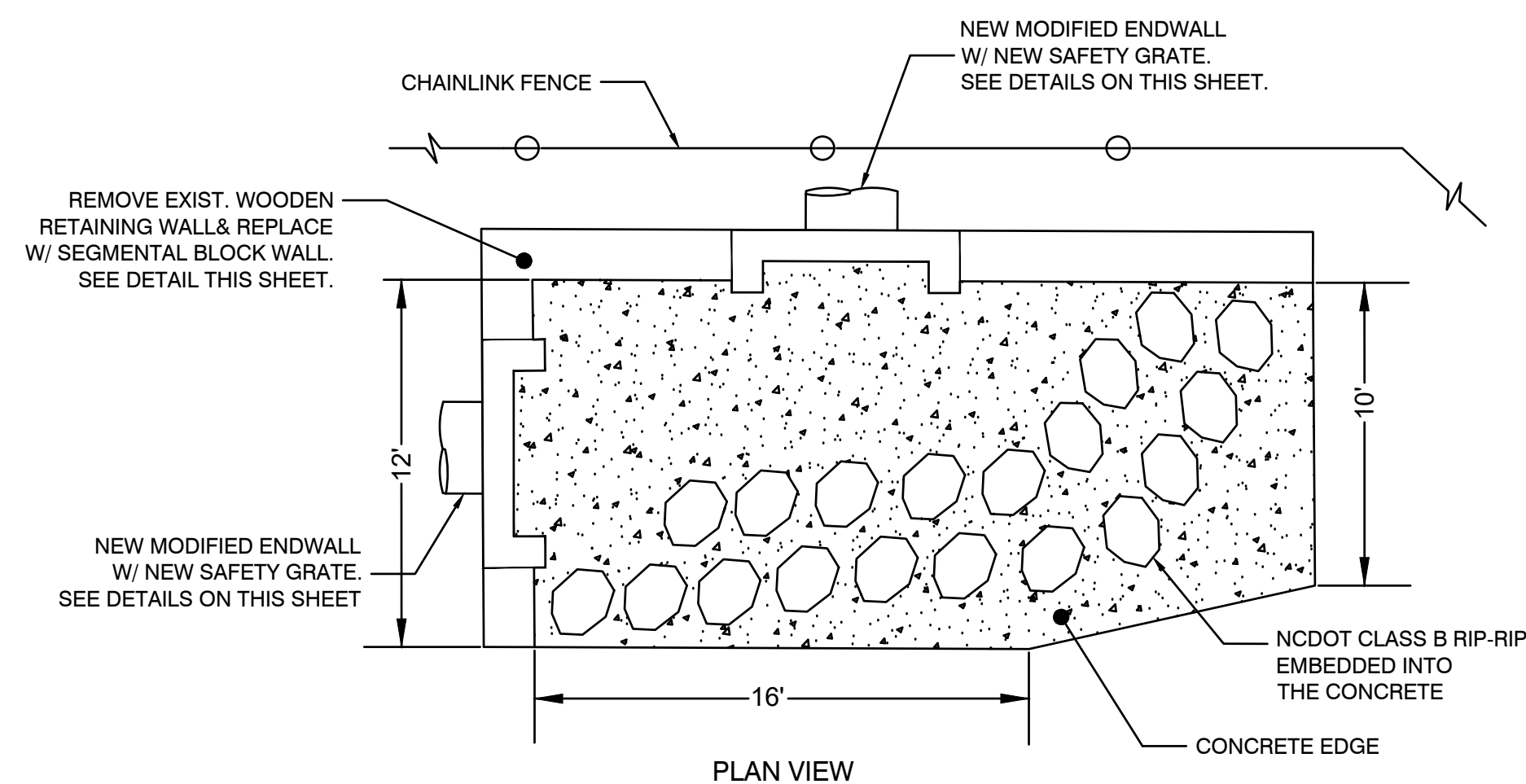
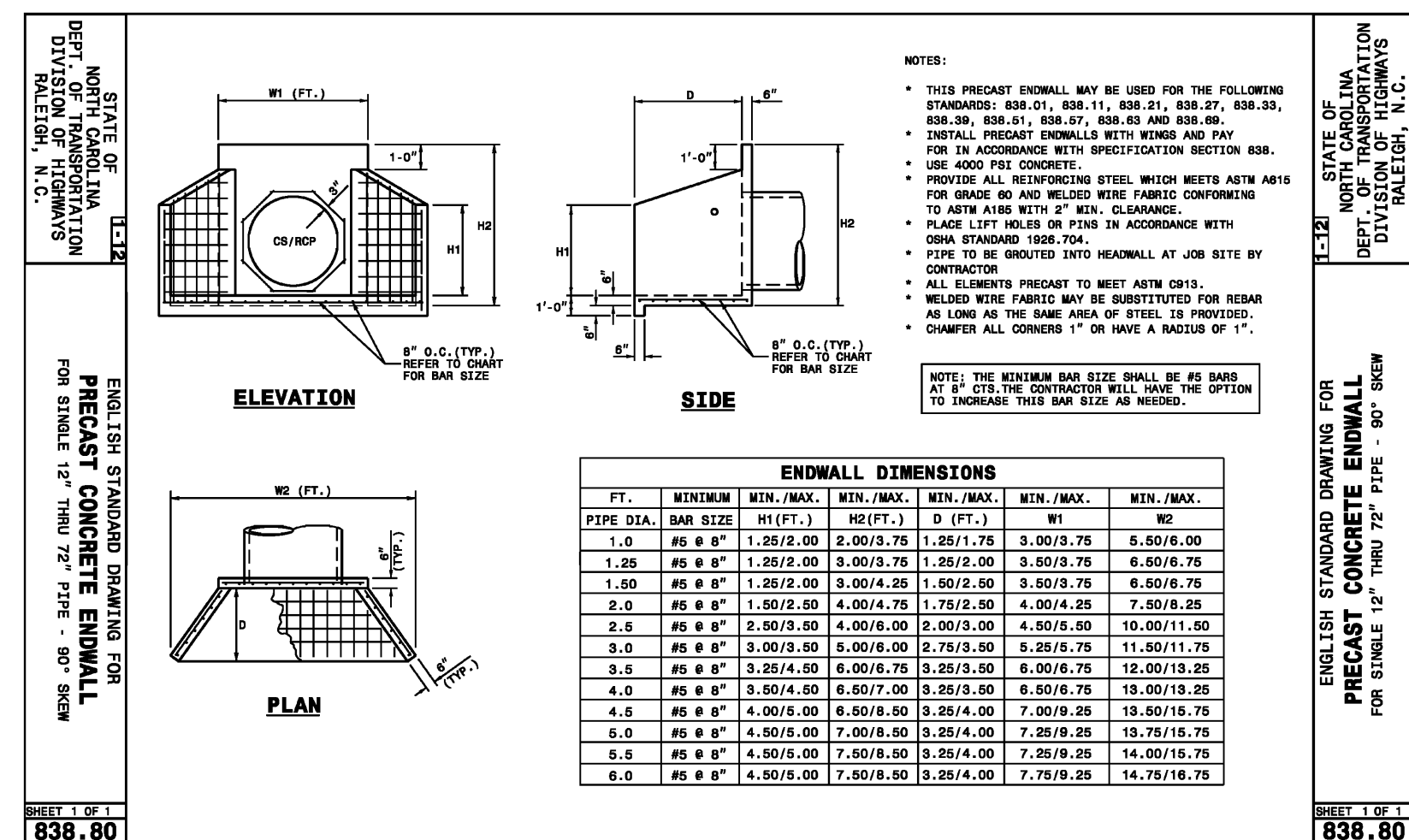


1 STANDARD STORM WATER TRENCH INSTALLATION
C505 NOT TO SCALE



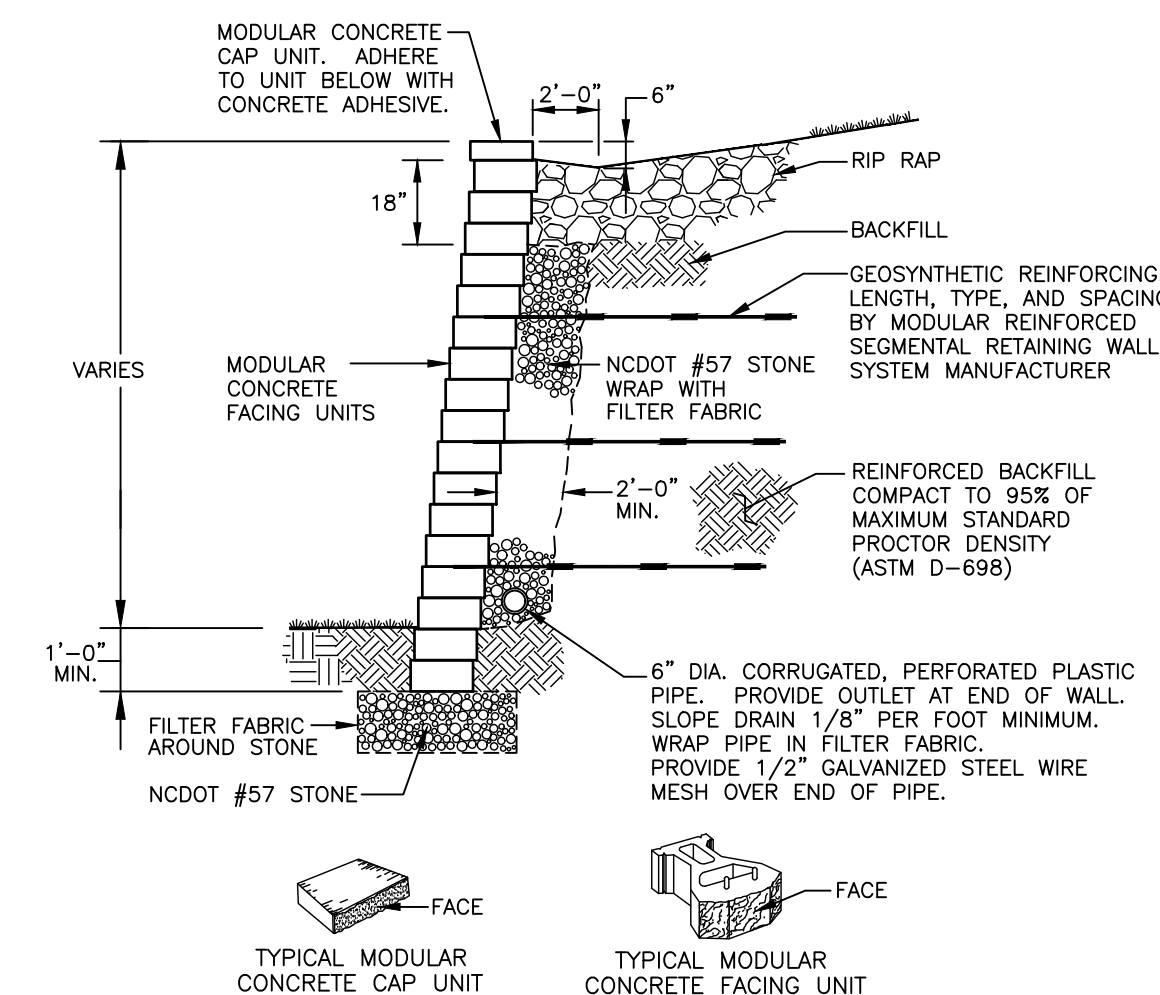
- NOTES:**
- ALL EDGING (STANDARD) SHALL BE 6" THICK WITH CURING COMPOUND, WITH 95% COMPACTED SUBGRADE.
 - CONTRACTOR SHALL ADD JOINTS/EXPANSION JOINT (10' MAX) AS NECESSARY TO AVOID CRACKING. MATCH EXISTING JOINTS/EXPANSION JOINTS TO THE GREATEST EXTENT POSSIBLE WHEN REPLACING PAVEMENT. REFER TO EXPANSION JOINT/CONTROL JOINT DETAILS ON SHEET L504.

4 CONCRETE EDGING W/ RIP-RAP DETAIL
C505 NOT TO SCALE

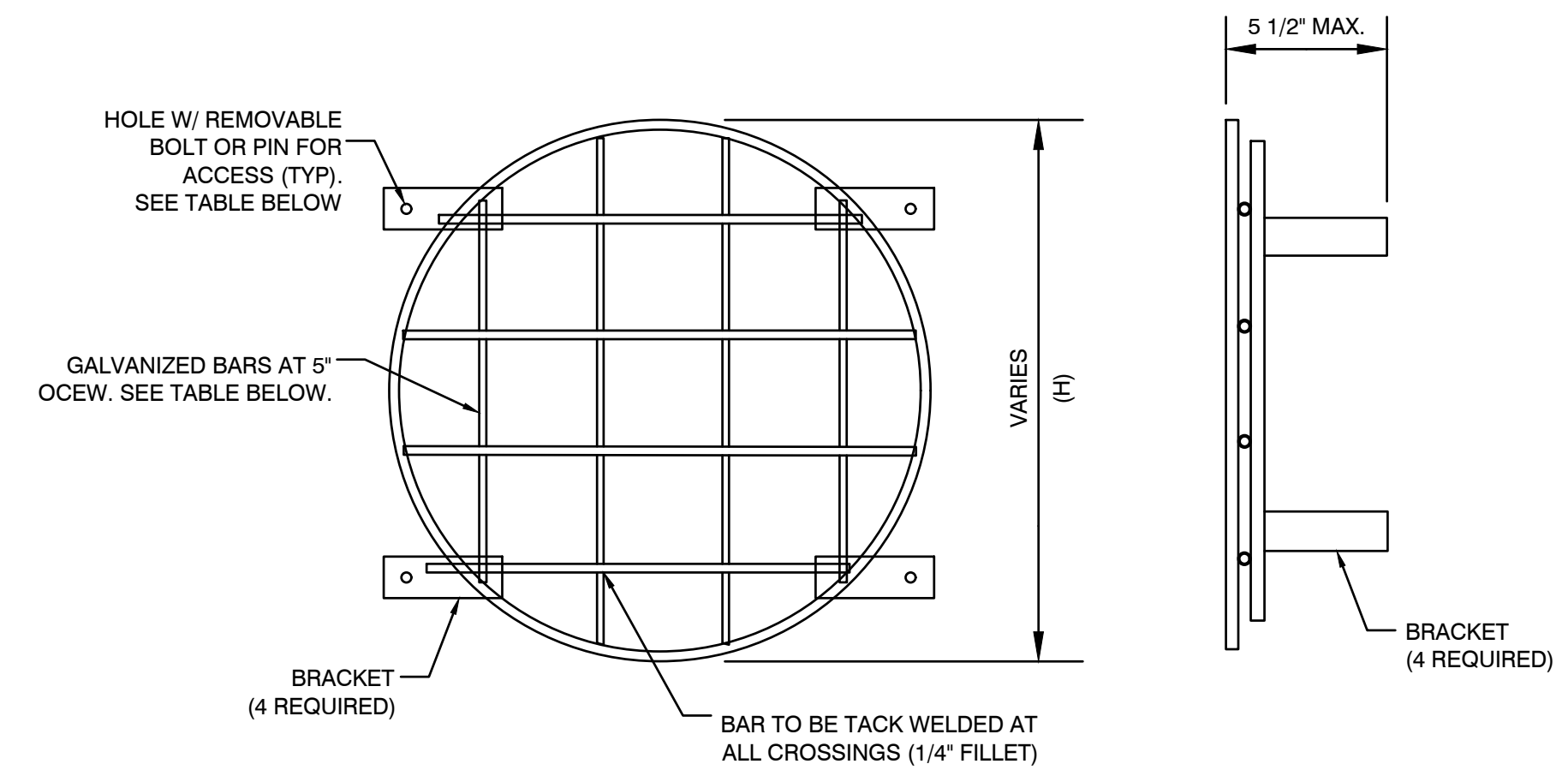


2 PRECAST CONCRETE ENDWALL DETAIL SHEET 1 OF 1 (NCDOT 840.80)
C505 NOT TO SCALE

- NOTES:**
- MODULAR REINFORCED SEGMENTAL RETAINING WALL SYSTEM SHALL BE DESIGNED AND PROVIDED BY CONTRACTOR FOR AN ACTIVE EARTH PRESSURE COEFFICIENT K_a OF 0.4 AND AN AT REST EARTH PRESSURE COEFFICIENT K_o OF 0.6. THE SEGMENTAL RETAINING WALL SYSTEM SHALL BE DESIGNED BY A LICENSED PROFESSIONAL ENGINEER REGISTERED IN THE STATE OF NORTH CAROLINA.
 - MODULAR RETAINING WALL SYSTEM SHOP DRAWINGS AND CALCULATIONS SHALL BE SIGNED AND SEALED BY THE PROFESSIONAL ENGINEER RESPONSIBLE FOR THEIR DESIGN. SHOP DRAWINGS AND CALCULATIONS SHALL BE SUBMITTED TO DEWBERRY ENGINEERS, INC. FOR REVIEW AND APPROVAL.
 - FOR UNITS TO BE EMBEDDED, COMPACT FILL IN FRONT OF UNITS AT THE SAME TIME THAT FILL BEHIND THE UNITS IS COMPACTED.
 - INSTALL #57 STONE IN A 2'-0" WIDTH DIRECTLY BEHIND THE WALL AND EXTEND STONE TO WITHIN 18" OF THE TOP OF THE WALL. DRAINAGE AGGREGATE SHALL NOT EXTEND BELOW FINAL GRADE IN FRONT OF THE WALL.
 - COMPACTION SHALL BE TO 95% OF MAXIMUM STANDARD PROCTOR DENSITY (ASTM D-698).
 - COMPACTION WITHIN 5 FEET OF WALL SHALL BE LIMITED TO HAND OPERATED EQUIPMENT.
 - GEOSYNTHETIC REINFORCEMENT SHALL BE PLACED WITH STRONGEST DIRECTION PERPENDICULAR TO WALL. FOLLOW GEOSYNTHETIC REINFORCEMENT MANUFACTURER'S INSTALLATION INSTRUCTIONS AND WRITTEN SPECIFICATIONS.
 - CONTRACTOR SHALL DIRECT SURFACE RUNOFF TO AVOID DAMAGING WALL DURING CONSTRUCTION.
 - FOLLOW APPLICABLE PROVISIONS OF THE MODULAR RETAINING WALL SYSTEM MANUFACTURER'S INSTALLATION INSTRUCTIONS AND WRITTEN SPECIFICATIONS.
 - COORDINATE MODULAR CONCRETE UNIT STYLE, PATTERN, AND COLOR WITH OWNER.



5 MODULAR REINFORCED SEGMENTAL RETAINING WALL DETAIL
L505 NOT TO SCALE



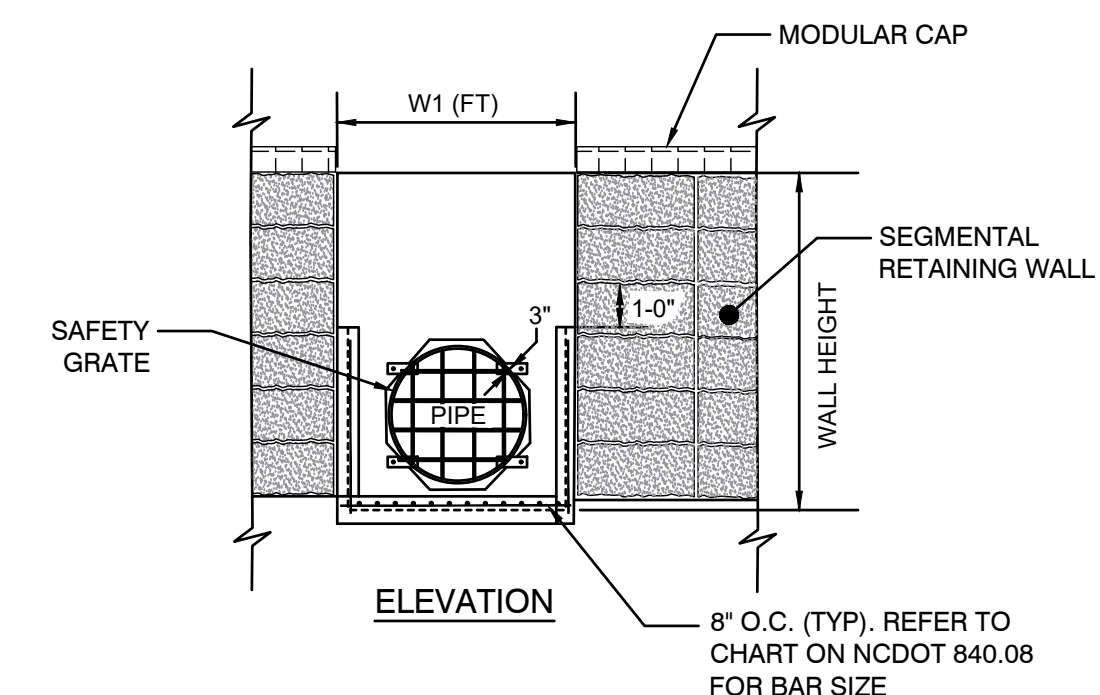
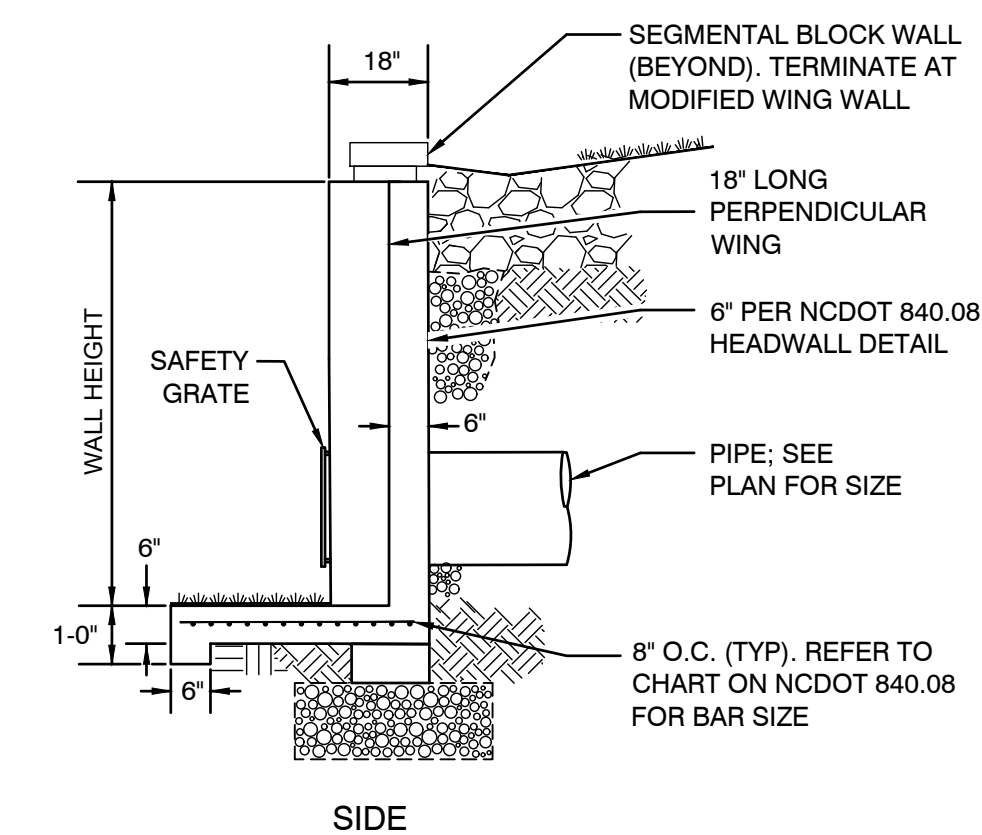
NOTE:
GALVANIZED ROUND OR SQUARE BARS MAY BE USED FOR APPLICATION.

ROUND PIPES (OPENINGS)	
PIPE SIZE	H
12"	2 1/2"
15"	3"
18 - 24"	4"
27 - 36"	5"
42 - 54"	6"
60 - 72"	7"
78 - 90"	8"

BAR SIZES (STANDARD DESIGN)			
PIPE SIZE	HOLE DIA. REQ.	BOLT DIA.	BAR DIA.
12" - 24"	3/4"	5/8"	5/8"
27" - 48"	7/8"	3/4"	3/4"
54" - 90"	1 1/8"	1"	1"

BOLT LENGTH = PIPE WALL THICKNESS + 2 1/2"

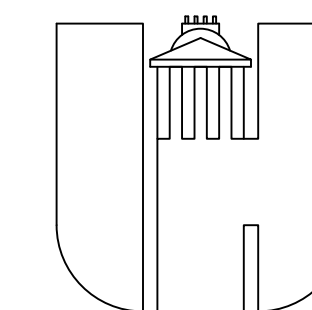
3 ENDWALL MOUNTED SAFETY GRATE DETAIL
C505 NOT TO SCALE



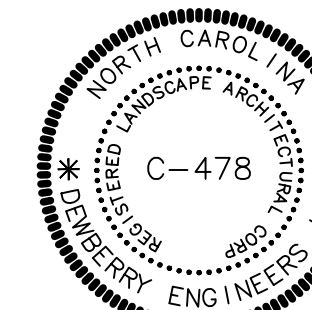
NOTES:

- REFER TO ENDWALL DETAIL (NCDOT 840.80) ON THIS SHEET FOR ADDITIONAL INFORMATION.

6 MODIFIED ENDWALL DETAIL
C505 NOT TO SCALE



SEAL



SCALE: AS SHOWN

No.	DATE	BY	Description
0	1/15/24	CPR	BID DOCS

REVISIONS

DRAWN BY: TGL
APPROVED BY: RBR
CHECKED BY: CPR
DATE: JANUARY 15, 2024

TITLE

**CIVIL
DETAILS**

PROJECT NO. 50151766

TOWN OF CARY
PROJECT NO: 23-DP-5913

NCDEQ
PROJECT NO: WAKE-2024-019

L505